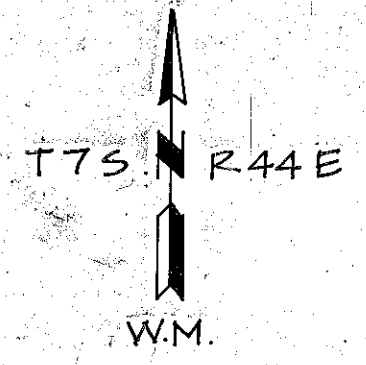


SECTIONS 25, 26, 35 & 36



**LEGEND**

- FOUND CORNER. BRASS CAP OF RECORD
- ▲ ALUMINUM CAP SET BY P.L.S. # 10004 IN 1982 & 1983.
- CORNER SET FROM ORIGINAL G.L.O. EVIDENCE BRASS CAP.
- ⊙ BRASS OR ALUMINUM CAP CORNERS SET BY SURVEY.

**BASIS OF BEARING**  
SOLAR OBSERVATION

**MEAN MAGNETIC DECLINATION**  
N 20° 00' E

**NOTES**  
FORM R6-7100-57 FILED WITH THIS PLAT FOR STANDARD INDEX FILE NUMBERS R-20, R-21, R-22, T-19, T-21, T-23, U-19, U-21, U-22, U-23, V-17, V-19, V-22, V-23, V-24, W-19, W-21, W-23, W-24, X-17, X-19, X-21, X-22, X-23, Y-22, AND Y-23.

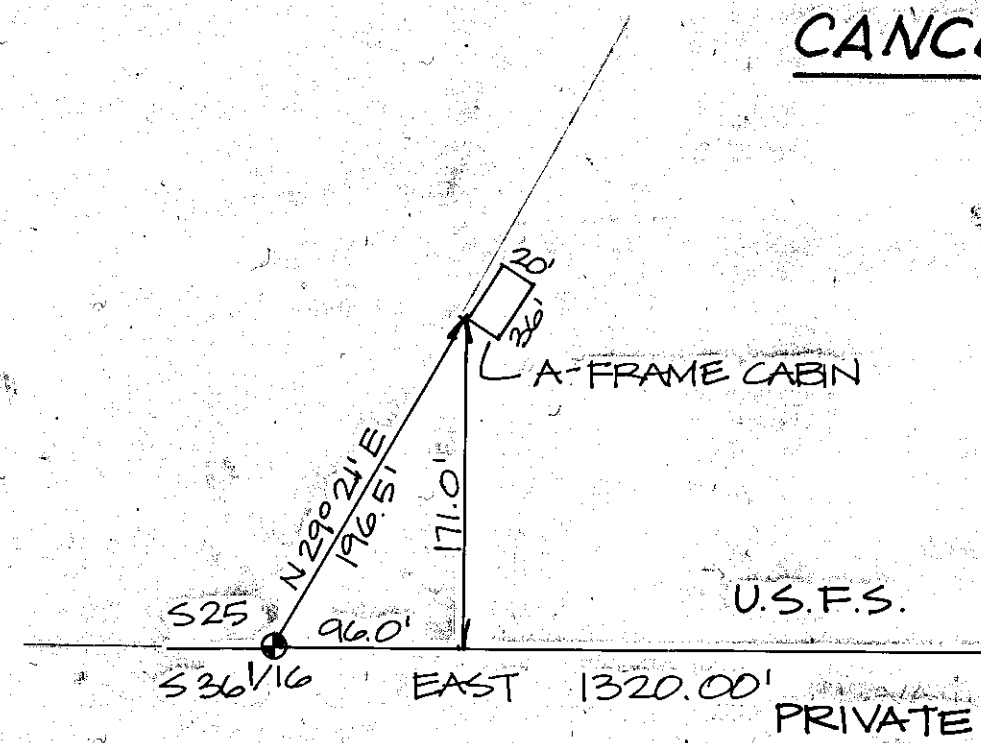
- POSTED U.S.F.S. BOUNDARY
- ( ) RECORD G.L.O. BEARING & DISTANCE
- [ ] METERS
- SURVEY OF RECORD BEARING & DISTANCE

**REFERENCE MATERIAL**  
ORIGINAL G.L.O. NOTES AND PLAT.  
FIELD BOOKS 1-24.  
SURVEY OF RECORD #B-44-64 AND 7-45-19.

**SURVEY HISTORY**  
TYPED DOCUMENT FILED WITH PLATS.

**NARRATIVE**  
TYPED 2 PAGE DOCUMENT FILED WITH PLATS.

**CANCELLED SEE # 7-44-227**



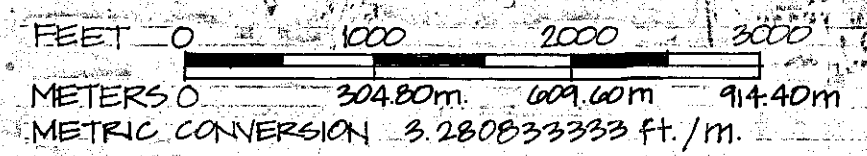
**DETAIL 'A'**  
1" = 10'

I, BARRY B. BARBOUR, a registered land surveyor in the State of Oregon, hereby certify that this plat and notes hereon, or attached are a correct representation of a survey I performed during 1982 to 1985, for the U.S. Forest Service in accordance with the articles of the contract and with the Statutes of the State of Oregon. Contract number 53-04M3-2-2781

*Barry B. Barbour*  
Barry B. Barbour  
Registered Land Surveyor  
Oregon license 1051

FILED 11-7-85  
BAKER COUNTY SURVEYOR  
SURVEY NO. 7-44-77

REGISTERED PROFESSIONAL LAND SURVEYOR  
*Barry B. Barbour*  
OREGON  
OCT. 17, 1975  
BARRY B. BARBOUR  
1051



SECTIONS 25, 26, 35 & 36 T7S, R44E, W.M. BAKER COUNTY, OREGON U.S.F.S. WALLOWA-WHITMAN NATIONAL FOREST		
Scale: 1" = 1000' 1" = 304.80m	BARRY B. BARBOUR Professional Land Surveyor P.O. Box 4811 BOISE, IDAHO	Sheet No. 5 6
Date: APRIL 1985	7-44-77	