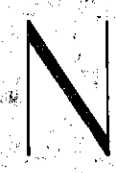
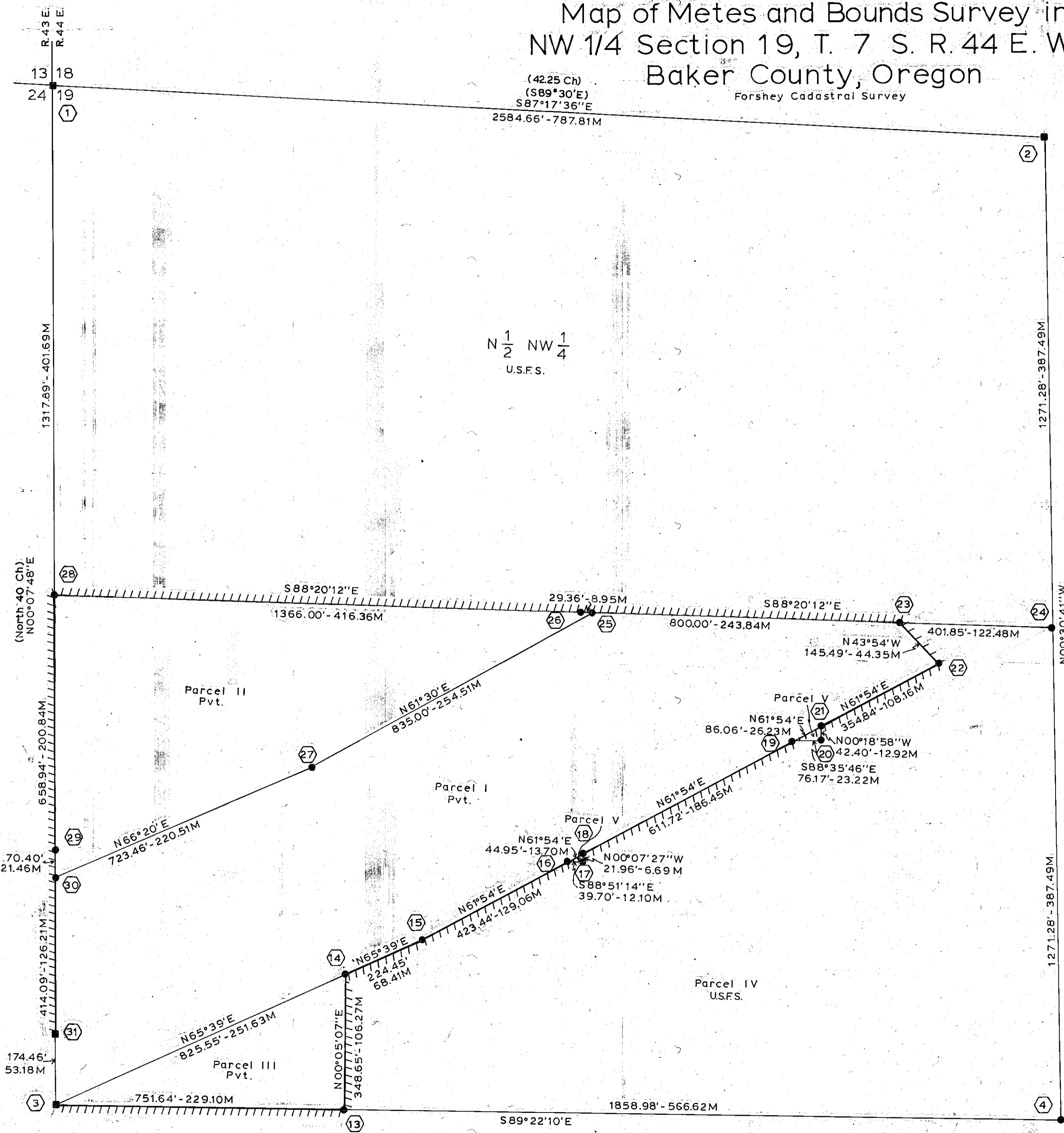
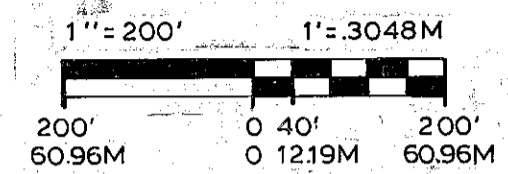


# Map of Metes and Bounds Survey in NW 1/4 Section 19, T. 7 S. R. 44 E. W.M. Baker County, Oregon

Forshey Cadastral Survey



### Scale



Magnetic Declination  
17 1/2° East

### Note

Parcel no.'s and descriptions of metes and bounds parcels were derived from The Elkhorn Title Company, Baker, Oregon, dated Nov. 18, 1981.

Bearing trees for corner no.'s 15, 23, 23, 25, 27, and 30, are scribed # 2, 3, 4, 5, 6, and 7, respectively, with section no. and BT.

Bearing trees for corner no.'s 14, 16, 18, 19, and 21 are scribed "X" "BT".

REGISTERED  
PROFESSIONAL  
LAND SURVEYOR

*Carl E. Sundet*  
OREGON  
JULY 14, 1978  
CARL E. SUNDET  
1664

- 27 T7SR44E S19 #6 1982 RLS1664  
Set: AP 23" in ground in mos.  
Ref: 7" PPBT. N 58°E-28.9ft.  
8" PPBT. S 22°E-12.2ft.  
Comp. decl. 20° East
- 28 T7S R43ER44E N 1/16 S24|S19 1982 RLS1664  
Set: AP 26" in ground in mos.  
Ref: 9" PPBT. S 55°W-26.4ft.  
6" PPBT. S 66 1/2°E-5.8ft.  
Comp. decl. 20° East
- 29 T7S SN1/64 R43ER44E S24|S19 1982 RLS1664  
Set: AP 26" in ground in mos.  
Ref: 12" PPBT. S 87°W-31.1ft.  
8" DFBT. N 20 1/2°E-24.8ft.  
Comp. decl. 20° East
- 30 T7S R43ER44E S24|S19 #7 1982 RLS1664  
Set: AP 26" in ground in mos.  
Ref: 8" PPBT. N 53°W-76.7ft.  
7" WF.B.T. S 21 1/2°E-22.4ft.  
Comp. decl. 20° East
- 31 T7S R43ER44E S24|S19 MS867 1981 RLS1664  
Fd: 1981 AP, RLS 1664.  
Ref: 7" PPBT. S 56 1/2°W-62.0ft.  
8" Fir BT. N 72 1/2°E-18.7ft.  
Comp. decl. 20° East

Surveyed for: US Forest Service  
Contract No. 53-04M3-1-2667N  
Surveyed by: SUNDET AND ASSOCIATES  
P.O. Box 1228  
Lakeview, Oregon  
Ph. No. 947-3293  
Date: 1981-82  
Drawing No. 203B Sheet 2 of 3 Field books 1, 2, 3, and 4.

FILED *Oct. 19, 1982*  
BAKER COUNTY SURVEYOR  
SURVEY NO. 7-44-39