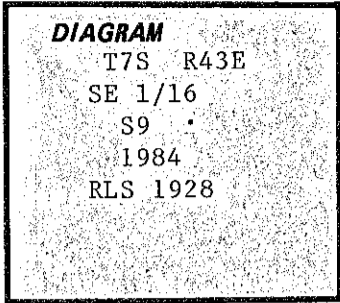


CERTIFIED RECORD OF LAND CORNER MONUMENTATION

History of original corner establishment:

Corner not previously established.



Description of corner evidence found:

Corner not previously established.

Description of monument and accessories I established to perpetuate the original location of this corner:

Set 30" long aluminum pipe with 3 1/2" aluminum cap 6" above ground, marked as shown above.

Set steel post with signs 54-9 and 54-2 attached.

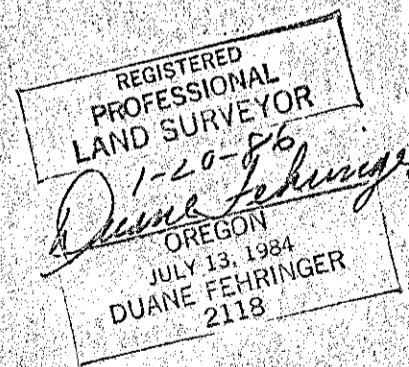
Scribed:

- 5" Fir "SE 1/16 S9 BT" N21E 24.4'
- 14" Fir "SE 1/16 S9 BT" N65W 19.6'

Nailed aluminum washers stamped "RLS 1928" above "BT" scribe on trees.

Painted blazes red and a 6" red band around trees.

Attached signs 54-3 & 54-9 to trees.



Office of..... County of.....

State of..... I hereby certify that the within instrument was filed in this office

for record on the..... day of....., 19.....

..... by.....
(COUNTY OFFICIAL) (DEPUTY)

FILED 5-9-86
BAKER COUNTY SURVEYOR
SURVEY NO. 7-42-131