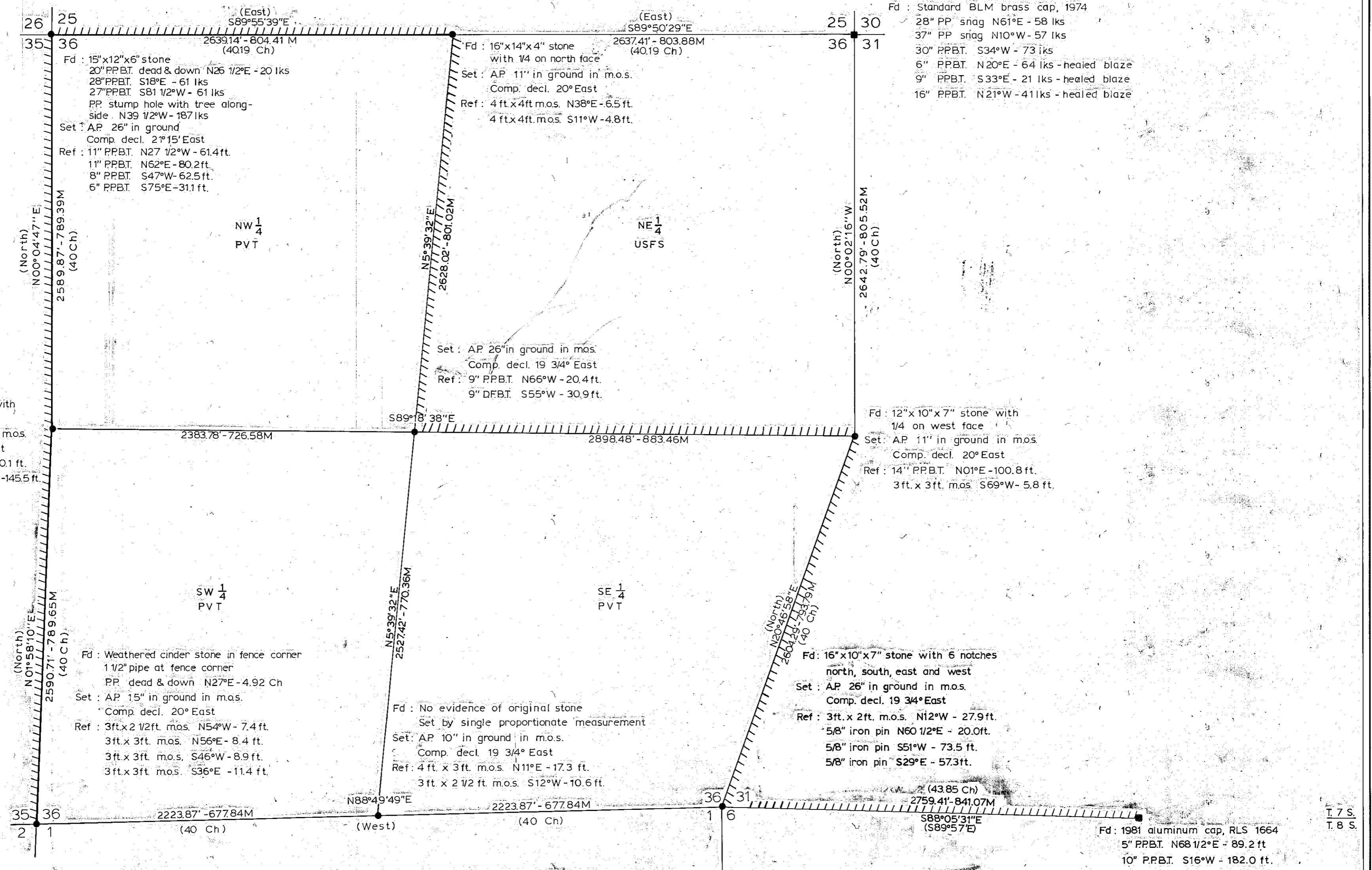
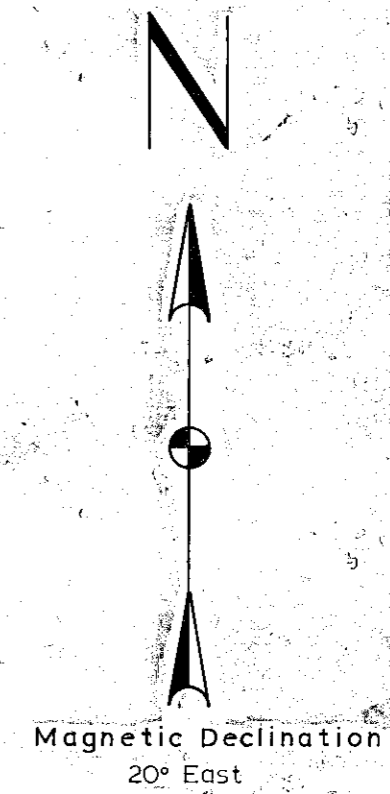
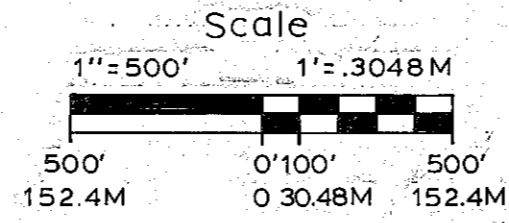


Map of Survey in Section 36, T. 7 S. R. 43 E. W.M. Baker County, Oregon

Forshey Cadastral Survey

Legend

- AP - 2 1/2" x 30" aluminum pipe with 3/4" aluminum cap
- - Monuments set this survey
- - Monuments found
- () - Record bearing and/or distance
- M - Meters
- Ch - Chains
- lks - Links
- Comp decl - Compass declination
- Pvt - Private
- m.o.s. - mound of stone
- ||||| - Property line posted
- USFS - US Forest Service
- Ref - Reference
- BT - Bearing tree
- PP - Ponderosa pine
- DF - Douglas fir



Note

Bearings based on solar observation.
All bearing trees, monuments, and mounds of stone, marked or raised as per BLM Manual of Instructions, 1973, with the addition of a) a red band painted on smoothed bark at breast height and a brass tag stamped RLS 1664 placed in BT blaze on bearing trees and b) RLS 1664 stamped on new monuments.
U.S.F.S. Forms 7100-57, Certified Record of Land Corner Monumentation, on file at Baker County for all corners monumented this survey.

History

The east boundary and subdivision of T. 7 S. R. 43 E. W.M. was performed by W. Barr under contract no. 388, dated May 1881.
The south boundary of T. 7 S. R. 43 E. W.M. was surveyed by W. Barr under contract no. 372, dated 1880.
The west boundary of T. 8 S. R. 44 E. W.M. was originally surveyed by Walden under contract no. 198, dated 1873, and a retracement survey was performed by Barr under contract no. 372, dated 1880.
The south boundary of T. 7 S. R. 44 E. W.M. was originally surveyed by Walden under contract no. 198, dated 1873, and a retracement survey was performed by Barr under contract no. 388, dated 1881.
A retracement survey and perpetuation of the line from the west 1/4 section 36 to the section corner 35, 36, 1, and 2, a survey from the west 1/4 corner section 36 to the east 1/4 corner section 36, and the marking of the boundary line between the west 1/4 corner section 36 and the east 1/4 corner section 36 was performed by George Drake, Forest Examiner, in April 1919. The notes of which are on file at the Willowa-Whitman National Forest office in Baker, Oregon.

REGISTERED
PROFESSIONAL
LAND SURVEYOR
Carl E. Sundet
OREGON
JULY 14, 1998
CARL E. SUNDET
1664

"I, Carl E. Sundet, a registered land surveyor in the State of Oregon, hereby certify that this plat and the notes hereon, or attached, are a correct representation of a survey I performed in 1981-1982, for the U.S. Forest Service, in accordance with the statutes of the State of Oregon and the articles of my contract."
Carl E. Sundet
Carl E. Sundet
Registered Land Surveyor
Oregon License No. 1664

FILED Aug 22, 1983
BAKER COUNTY SURVEYOR
SURVEY NO. 7-43-89

Surveyed for: U.S. Forest Service
Contract No. 53-04M3-1-2667N
Surveyed by: Sundet and Associates
PO Box 1228
Lakeview, Oregon
Ph.No. 503-947-3293
Date: 1981-1983
Drawing No. 247

Fd: 1982 aluminum cap, RLS 1664 in mos
3ft. x 2ft. mos. N58°W - 8.3ft.
3ft. x 2ft. mos. S57°W - 8.6ft.

69-54-6