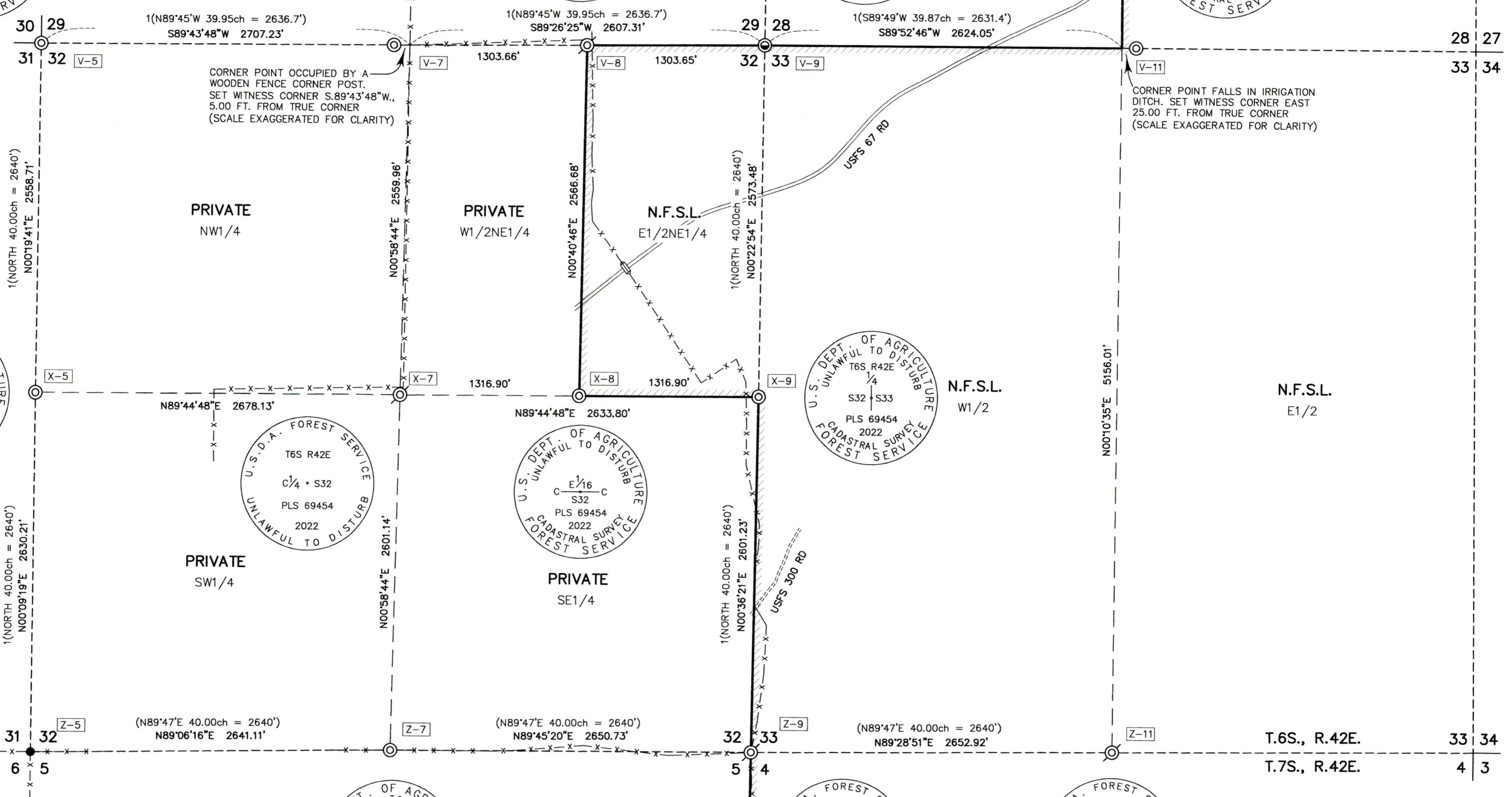
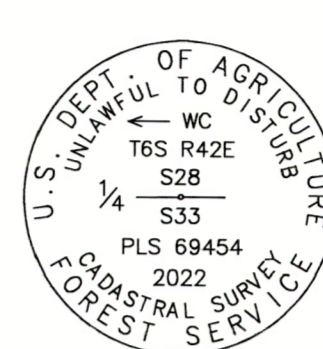
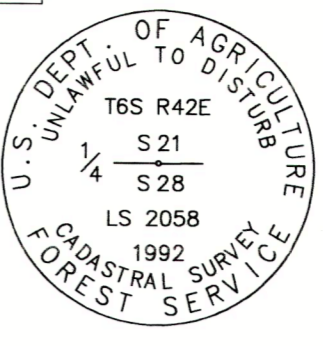
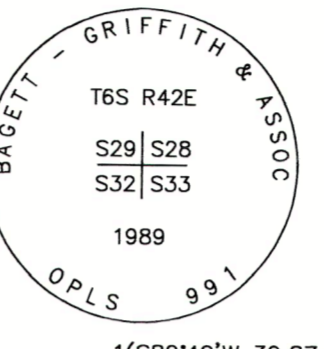
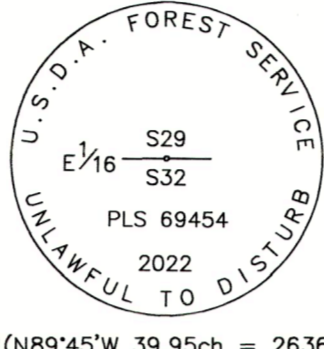
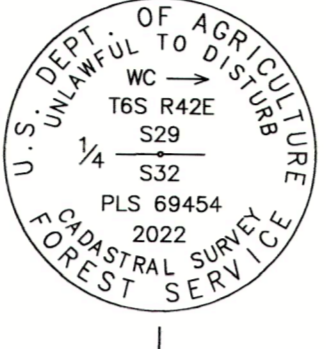
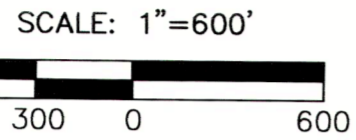


20 21 21 22
29 28 28 27



BASIS OF BEARINGS

GEODETIC NORTH
DERIVED BY G.P.S. OBSERVATION TAKEN AT THE
NORTH 1/4 CORNER SECTION 28



NARRATIVE

THIS SURVEY WAS PERFORMED FOR THE WALLOWA-WHITMAN NATIONAL FOREST, WITH THE PURPOSE OF DELINEATING THE BOUNDARIES BETWEEN PRIVATE LAND AND NATIONAL FOREST SYSTEM LAND IN SECTIONS 28, 32 AND 33, T.6S., R.42E., W.M., UNION COUNTY, OREGON, AND IN SECTIONS 4 AND 5, T.7S., R.42E., W.M., BAKER COUNTY, OREGON.

A SEARCH WAS MADE OF THE AVAILABLE RECORDS PERTAINING TO THIS SURVEY. A HISTORY OF THE RELEVANT SURVEYS ARE AS FOLLOWS:

1. THE EXTERIOR LINES AND SUBDIVISION OF TOWNSHIP 7 SOUTH, RANGE 42 EAST WAS PERFORMED BY WILLIAM B. BARR, U.S. DEPUTY SURVEYOR, UNDER CONTRACT NO. 355 DATED JUNE 14, 1880.
2. THE SUBDIVISION OF TOWNSHIP 6 SOUTH, RANGE 42 EAST WAS PERFORMED BY WILLIAM B. BARR, U.S. DEPUTY SURVEYOR, UNDER CONTRACT NO. 443 DATED MAY 29, 1882.
3. A SURVEY FOR CHARLES GREY BY THOMAS F. LAGIER, PE 6396, FILED JUNE 18, 1974 IN THE BAKER COUNTY SURVEYOR'S OFFICE AS SURVEY NO. 7-42-3.
4. A SURVEY FOR THE WALLOWA-WHITMAN NATIONAL FOREST BY RONALD E. STOLL, PLS 2058, PERFORMED IN 1993 UNDER USFS CONTRACT NO. 53-04M3-1-0113. FILED IN THE BAKER COUNTY SURVEYOR'S OFFICE MAY 26, 1993 AS SURVEY NO. 6-42-2, AND FILED IN THE UNION COUNTY SURVEYOR'S OFFICE SEPTEMBER 10, 1993 AS SURVEY NO. 038-1993.
5. A SURVEY FOR THE WALLOWA-WHITMAN NATIONAL FOREST BY RONALD E. STOLL, PLS 2058, PERFORMED IN 1991 AND 1992 UNDER USFS CONTRACT NO. 53-04M3-1-0114. FILED IN THE BAKER COUNTY SURVEYOR'S OFFICE MAY 26, 1993 AS SURVEY NO. 7-42-19.

FIELD MEASUREMENTS WERE MADE TO RECOVER APPURTENANT CONTROLLING MONUMENTS FROM THE AFOREMENTIONED SURVEYS. AT EACH CORNER LOCATION, A THOROUGH SEARCH WAS MADE FOR ANY EXISTING CORNER EVIDENCE, WHICH WAS EVALUATED AS FOLLOWS:

T.6S., R.42E.:

(R-11) NORTH 1/4 CORNER SECTION 28: FOUND ALUMINUM PIPE AND CAP AND ALL FOUR BEARING TREES ESTABLISHED BY RONALD E. STOLL, PLS 2058 PER SURVEY FILED AS BAKER COUNTY SURVEY NO. 6-42-2 AND UNION COUNTY SURVEY NO. 038-1993. I ACCEPT THE MONUMENT FOR THE POSITION OF THE 1/4 CORNER.

(V-5) NORTHWEST CORNER SECTION 32: FOUND STONE 15"x11"x4" (RECORD: 16"x12"x4"), TIPPED OVER WITH ONE OTHER STONE ALONGSIDE. WHEN STOOD UPRIGHT, THE STONE WAS PROPERLY ORIENTED WITH FIVE GROOVES ON THE EAST FACE AND ONE GROOVE ON THE SOUTH FACE. I ACCEPT THE FOUND STONE FOR THE POSITION OF THE SECTION CORNER.

(V-7) NORTH 1/4 CORNER SECTION 32: I SEARCHED FOR BUT DID NOT FIND THE ORIGINAL CORNER STONE. THERE WAS A LARGE ROCK JACK AT THE CORNER OF LONG-ESTABLISHED FENCES RUNNING NORTH, EAST AND SOUTH. THERE WERE ALSO TWO OTHER ROCK JACKS SUPPORTING GATES. IT APPEARED AS THOUGH ALL OF THE ROCKS IN THE IMMEDIATE AREA HAD BEEN PLACED IN THESE THREE ROCK JACKS, AS THE SEARCH AREA WAS OTHERWISE DEVOID OF STONES. ALL THREE ROCK JACKS HAVE BEEN REBUILT IN THE LAST SEVERAL YEARS, BUT THE FENCES THEMSELVES WERE VERY OLD. I ACCEPT THE FENCE AS THE BEST AVAILABLE EVIDENCE OF THE 1/4 CORNER.

(V-9) NORTHEAST CORNER SECTION 32: FOUND A 2 1/2" ALUMINUM PIPE WITH A 2 1/2" BAGGETT-GRIFFITH AND ASSOCIATES ALUMINUM CAP IN A MOUND OF STONE AND FOUR BEARING TREES ESTABLISHED IN 1989 BY GREG BLACKMAN, PLS 991. I ALSO FOUND THE ORIGINAL MARKED CORNER STONE BURIED NORTH AND ALONGSIDE THE ALUMINUM MONUMENT, AND THE REMAINS OF THE ORIGINAL NORTHWEST BEARING TREE AT G.L.O. RECORD BEARING AND DISTANCE FROM THE ALUMINUM MONUMENT. ALTHOUGH I FIND NO RECORD OF THE 1989 REMONUMENTATION IN THE COUNTY SURVEYOR'S RECORDS, IT IS OBVIOUS THAT MR. BLACKMAN'S WORK REPRESENTS A CAREFUL AND FAITHFUL PERPETUATION OF THE ORIGINAL CORNER POSITION, AND I ACCEPT IT FOR THE SECTION CORNER.

(V-11) NORTH 1/4 CORNER SECTION 33: FOUND THE REMAINS OF THE ORIGINAL NORTHEAST BEARING TREE, WHICH IS A SAWN DOUGLAS-FIR STUMP, APPROXIMATELY 40 INCHES IN DIAMETER AND 1.5 FEET TALL, WITH LOWER BLAZE AND SCRIBING "BT" VISIBLE. THERE IS NO TRACE OF THE CORNER STONE OR THE SOUTHWEST BEARING TREE, AS BOTH FALL WITHIN THE PRISM OF AN IRRIGATION DITCH AND HAVE BEEN DESTROYED. I REESTABLISH THE 1/4 CORNER AT G.L.O. RECORD BEARING AND DISTANCE FROM THE FOUND REMAINS OF THE BEARING TREE.

(X-5) WEST 1/4 CORNER SECTION 32: FOUND A 3.5 FT. DIAMETER MOUND OF STONE WITH AN OLD FOREST SERVICE K-TAG IN THE CENTER, MARKED FOR THE 1/4 CORNER, DATED APRIL 9, 1964, INITIALED BY JHH AND DRW, AND MARKED "HERE" WHERE BEARING AND DISTANCE TO CORNER WOULD BE WRITTEN. THE MOUND WAS COMPRISED OF SHALE STONES, MOST OF WHICH HAD BROKEN APART. I EXAMINED ALL OF THE PIECES BUT DID NOT IDENTIFY ANY CHISEL MARKS. DURING THE COURSE OF MY SURVEY, I ALSO LOCATED AN OLD FENCE LINE ALONG A PORTION OF THE EAST-WEST CENTER OF SECTION 32. IF PROJECTED WEST, THE FENCE POINTED DIRECTLY AT THIS MOUND, INDICATING THAT THERE HAD BEEN LANDOWNER RELIANCE ON THE MOUND AS THE CORNER. I ACCEPT THE MOUND OF STONE AS THE BEST AVAILABLE EVIDENCE OF THE ORIGINAL 1/4 CORNER.

(X-8) WEST 1/4 CORNER SECTION 33: FOUND ORIGINAL CORNER STONE 17"x12"x8" (RECORD: 14"x12"x6") DIMLY MARKED, WITH A "1" AND "4" DISCERNABLE, WHICH HAD BEEN DISTURBED BY LOGGING ACTIVITY. ALSO FOUND THE REMAINS OF THE SOUTHWEST BEARING TREE, WHICH IS A WEATHERED SAWN PINE STUMP WITH LOWER BLAZE AND SCRIBING "BT" VISIBLE. THE REMAINS OF THE BOLE OF THE TREE WAS FOUND LYING ABOUT 10 FEET DOWNHILL FROM THE STUMP AND CONTAINED THE PARTIALLY HEALED UPPER BLAZE WITH FRAGMENTARY SCRIBING. I ALSO FOUND THE DEAD AND DOWN REMAINS OF THE NORTHWEST BEARING TREE. I REESTABLISH THE 1/4 CORNER AT G.L.O. RECORD BEARING AND DISTANCE FROM THE SOUTHWEST BEARING TREE.

(Z-5) SOUTHWEST CORNER SECTION 32: FOUND A 5/8" IRON PIN WITH DETERIORATED YELLOW PLASTIC CAP (MARKINGS ILLEGIBLE), SET AT THE BASE OF AN OLD ROCK JACK FENCE CORNER, FROM WHICH LONG-ESTABLISHED FENCES RUN EAST, SOUTH, AND WEST. I ALSO FOUND THE ORIGINAL CORNER STONE, 26"x12"x9" (RECORD: 30"x12"x10") WITH FIVE NOTCHES ON ONE EDGE AND ONE NOTCH ON OPPOSITE EDGE, LAYING IN THE BOTTOM OF THE ROCK JACK. I BELIEVE THE IRON PIN WAS SET BY THOMAS LAGIER, PE 6396, DURING HIS 1974 SURVEY FILED AS BAKER COUNTY SURVEY NO. 7-42-3. I ACCEPT THE FOUND PIN FOR THE SECTION CORNER. I DID NOT REMONUMENT THIS CORNER, AS IT WAS TIED FOR CORROBORATIVE EVIDENCE ONLY.

(Z-7) SOUTH 1/4 CORNER SECTION 32: FOUND STONE 14"x9"x5" (RECORD: 15"x10"x6") MARKED 1/4 ON THE TOP OF THE STONE, IN A LOOSE MOUND OF STONES IN A DILAPIDATED ROCK JACK ALONG AN OLD DOWN EAST-WEST RUNNING FENCE. ALSO FOUND AN OLD NATIONAL FOREST BOUNDARY SIGN AND FOREST SERVICE K-TAG BURIED 5 INCHES BELOW GROUND IN THE CENTER OF THE MOUND OF STONES. THE K-TAG IS MARKED FOR THE CORNER, BEARING = 0°00', DISTANCE = 0.00', DATED APRIL 8, 1964 AND INITIALED BY JHH AND DRW. THIS LOCATION IS HARMONIOUSLY RELATED TO OTHER FOUND CORNERS IN THE AREA, AND INDICATES RELIANCE OVER TIME (AT LEAST 58 YEARS). I ACCEPT THE CENTER OF THE MOUND OF STONES AS THE BEST AVAILABLE EVIDENCE OF THE ORIGINAL 1/4 CORNER.

(Z-9) SOUTHWEST CORNER SECTION 33: I SEARCHED FOR BUT DID NOT FIND THE ORIGINAL CORNER STONE. THERE WAS AN OLD ROCK JACK AT THE CORNER OF LONG-ESTABLISHED FENCES RUNNING NORTH, SOUTH, AND WEST. I ALSO FOUND AN OLD K-TAG ALONGSIDE WHICH WAS ILLEGIBLE DUE TO TIME AND WEATHER. THE ONLY STONES NEAR CALL-SIZE IN THE AREA WERE IN THE ROCK JACK. I EXAMINED ALL OF THE STONES FOR CHISEL MARKS BUT FOUND NONE. THE FENCE CORNER IS HARMONIOUSLY RELATED TO OTHER FOUND CORNERS IN THE AREA, INDICATES RELIANCE OVER TIME, AND IS ACCEPTED AS THE BEST AVAILABLE EVIDENCE OF THE ORIGINAL SECTION CORNER.

(Z-11) SOUTH 1/4 CORNER SECTION 33: FOUND STONE 33"x12"x6" (RECORD: 40"x12"x6") SET UPRIGHT 10" IN THE GROUND IN A 4 FT. MOUND OF STONE, CLEARLY MARKED 1/4 ON WEST FACE. ALSO FOUND THE REMAINS OF THE ORIGINAL BEARING TREE, WHICH IS A DEAD AND DOWN (WINDTHROWN) PINE WITH LARGE DOUBLE BLAZES. SCRIBING HAS APPARENTLY WEATHERED OFF. I ACCEPT THE FOUND STONE FOR THE POSITION OF THE 1/4 CORNER.

T.7S., R.42E.:

(C-9) WEST 1/4 CORNER SECTION 4: FOUND STONE 16"x12"x6" (RECORD: 15"x12"x12") MARKED 1/4 ON FACE, LOCATED IN A ROCK JACK WITH MANY OTHER STONES IN A NORTH-SOUTH RUNNING FENCE LINE. THE ROCK JACK WAS CONSTRUCTED OUT OF WOOD MATERIAL THAT WAS NEWER THAN THE REST OF THE FENCE, AND IS LOCATED IN A GULLY, WHERE IT WOULD BE NECESSARY TO ANCHOR THE FENCE DOWN. ALSO FOUND WOODEN REMAINS OF AN OLD ROCK JACK APPROXIMATELY 20 FEET NORTH, BUT WITH NO ROCKS. I SUSPECT THE ROCKS WERE TRANSPORTED FROM THE OLD JACK TO THE NEW ONE. I'M NOT CONVINCED THE MARKED STONE IS IN ITS ORIGINAL LOCATION. LACKING MORE CONCLUSIVE EVIDENCE AS TO ITS ORIGINAL LOCATION, I DECLARE THIS CORNER LOST, AND REESTABLISH ITS POSITION BY SINGLE PROPORTIONATE MEASUREMENT.

(E-9) SOUTHWEST CORNER SECTION 4: FOUND ALUMINUM PIPE AND CAP AND BEARING TREES ESTABLISHED BY RONALD E. STOLL, PLS 2058 PER SURVEY FILED AS BAKER COUNTY SURVEY NO. 7-42-19. I ACCEPT THE MONUMENT FOR THE POSITION OF THE SECTION CORNER.

SECTION 32 WAS SUBDIVIDED WITH REFERENCE TO THE 2009 B.L.M. MANUAL OF SURVEYING INSTRUCTIONS. NEW MONUMENTS WERE SET ACCORDING TO THE EVIDENCE FOUND AND THE METHODS DESCRIBED HEREIN. SEE THE CORNER MONUMENTATION RECORDS FILED SEPARATELY FOR MORE DETAILS REGARDING THE CORNER EVIDENCE FOUND, NEW MONUMENTS SET AND NEW CORNER ACCESSORIES ESTABLISHED. THE NATIONAL FOREST BOUNDARY WAS POSTED WITH ALUMINUM POSTS AND BOUNDARY SIGNS.

LEGEND

- FOUND 2 1/2" ALUMINUM PIPE WITH ATTACHED 3/4" ALUMINUM CAP - SEE SURVEY NO. 038-1993 AND CORNER MONUMENTATION RECORD FILED AS 038-1994R IN THE UNION COUNTY SURVEYOR'S RECORDS AND SURVEY NO. 6-42-2 FILED IN THE BAKER COUNTY SURVEYOR'S RECORDS
- FOUND 2 1/2" ALUMINUM PIPE WITH ATTACHED 2 1/2" ALUMINUM CAP MARKED AS SHOWN - NO RECORD FOUND. SEE NARRATIVE
- FOUND 2 1/2" ALUMINUM PIPE WITH ATTACHED 3/4" ALUMINUM CAP - SEE SURVEY NO. 7-42-19 FILED IN THE BAKER COUNTY SURVEYOR'S RECORDS
- FOUND 5/8" IRON PIN WITH DETERIORATED YELLOW PLASTIC CAP, MARKINGS ILLEGIBLE, PRESUMABLY SET DURING BAKER COUNTY SURVEY NO. 7-42-3. ALSO FOUND ORIGINAL MARKED STONE - SEE NARRATIVE FOR MORE DETAILS
- SET A 2 1/2"x3/4" ALUMINUM PIPE WITH 3/4" USFS ALUMINUM CAP MARKED AS SHOWN - SEE CORNER MONUMENTATION RECORDS FILED SEPARATELY FOR MORE DETAILS
- SET A 5/8"x24" IRON PIN INTO A DRILL HOLE IN BEDROCK AND ATTACHED A 3/4" USFS BRASS CAP MARKED AS SHOWN - SEE CORNER MONUMENTATION RECORDS FILED SEPARATELY FOR MORE DETAILS
- () RECORD BEARING AND DISTANCE FROM 1880 GENERAL LAND OFFICE SURVEY BY WILLIAM B. BARR, U.S. DEPUTY SURVEYOR UNDER CONTRACT NO. 355
- () RECORD BEARING AND DISTANCE FROM 1882 GENERAL LAND OFFICE SURVEY BY WILLIAM B. BARR, U.S. DEPUTY SURVEYOR UNDER CONTRACT NO. 443
- Z-5 PLS CORNER INDEX DESIGNATION
- N.F.S.L. NATIONAL FOREST SYSTEM LAND
- - - FENCE
- ⇄ CATTLE GUARD
- ▬▬▬ NATIONAL FOREST BOUNDARY POSTED THIS SURVEY

REFERENCES

BAKER COUNTY SURVEYOR'S RECORDS:
SURVEY NO. S 6-42-2, 7-42-3, AND 7-42-19

UNION COUNTY SURVEYOR'S RECORDS:
SURVEY NO. 038-1993 AND
CORNER MONUMENTATION RECORD FILED AS 038-1994R

BAKER COUNTY DEED NO. S 89-16-058 & 00350113

UNION COUNTY DEED NO. S 147195 & 20192176

G.L.O. FIELD NOTES

I HEREBY CERTIFY THAT THIS SURVEY WAS PERFORMED AT THE REQUEST OF THE WALLOWA-WHITMAN NATIONAL FOREST

SLP M.L. 12/12/2022
FOREST SUPERVISOR DATE

REGISTERED PROFESSIONAL LAND SURVEYOR

Jason L. Hatfield

OREGON
NOVEMBER 30, 2007
JASON L. HATFIELD
#69454
EXPIRES: 6/30/2023



UNITED STATES DEPARTMENT OF AGRICULTURE
FOREST SERVICE
REGION 6 - NORTHEAST OREGON LAND ZONE
1550 DEWEY AVENUE, SUITE A - BAKER CITY, OREGON 97814 - (541) 523-1283

MAP OF SURVEY
IN SECTIONS 28, 32 AND 33, T.6S., R.42E., W.M., UNION COUNTY, OREGON
AND SECTIONS 4 AND 5, T.7S., R.42E., W.M., BAKER COUNTY, OREGON

SURVEYED FOR	WALLOWA-WHITMAN NATIONAL FOREST
SURVEYED BY	JLH & DBL SURVEY COMPLETED: 10/8/2022
SCALE: 1"=600'	DRAWN BY: JLH

FILED December 14 2022
BAKER COUNTY SURVEYOR
SURVEY NO. 6-42-3
7-42-31