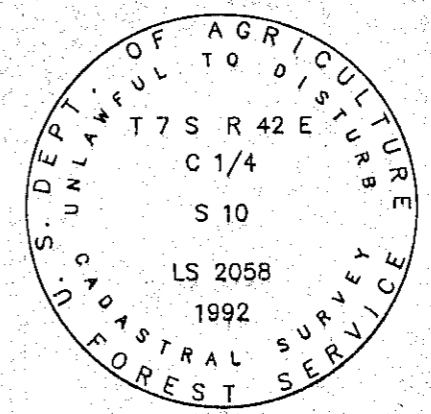
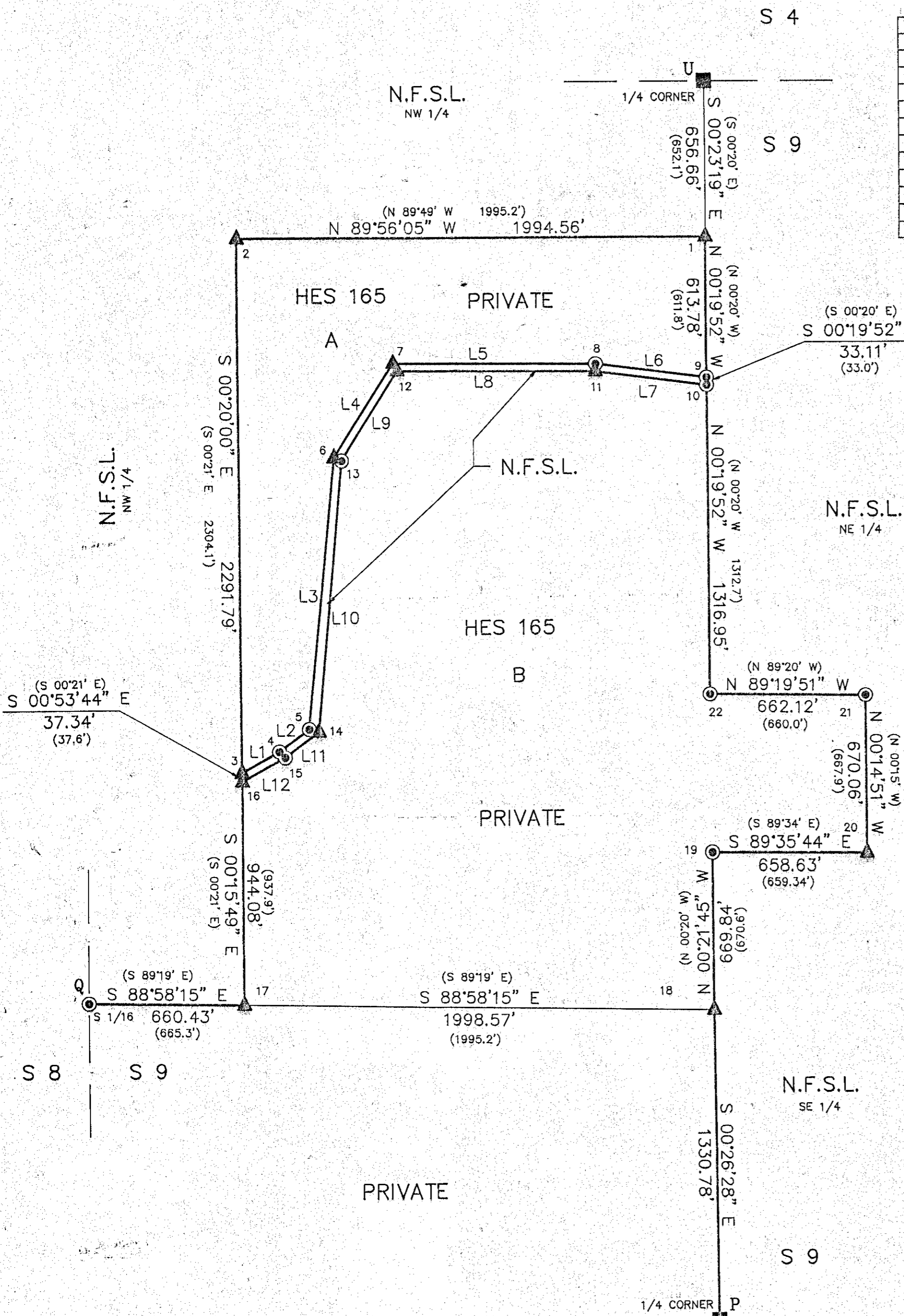
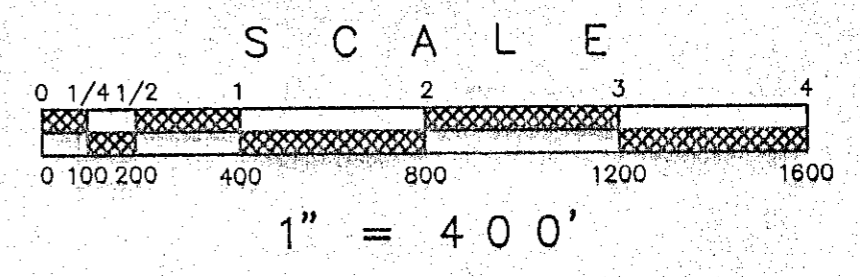


# SAWDINE CADASTRAL SURVEY WALLOWA-WHITMAN NATIONAL FOREST

LINE	DIRECTION	DISTANCE	(REC. DIR.)	(REC. DIST.)
L1	N 60°51'54" E	183.29'	N 60°25' E	182.8'
L2	N 53°02'54" E	159.47'	N 52°36' E	159.1'
L3	N 05°26'54" E	1161.26'	N 05°00' E	1158.3'
L4	N 32°08'40" E	477.45'	N 32°00' E	481.1'
L5	S 89°31'09" E	861.80'	S 89°30' E	867.2'
L6	S 82°27'06" E	475.29'	S 83°00' E	475.9'
L7	N 82°27'06" W	476.71'	N 83°00' W	478.5'
L8	N 89°31'09" W	842.70'	N 89°30' W	847.4'
L9	S 31°58'43" W	452.54'	S 32°00' W	454.7'
L10	S 04°58'42" W	1159.26'	S 05°00' W	1164.9'
L11	S 53°08'11" W	181.46'	S 52°36' W	175.6'
L12	S 60°57'13" W	210.12'	S 60°25' W	203.3'



TYPICAL FOREST SERVICE CAP MARKED PER B-L-M MANUAL



### LEGEND

- FOUND G-L-O EVIDENCE, SET A 3" DIAM. U.S.F.S. ALUMINUM CAPPED PIPE, 30" LONG, WITH MAGNET, MARKED PER B-L-M MANUAL, SEE TYPICAL CAP FOR STANDARD MARKINGS
- ▲ FOUND HES 165 EVIDENCE, SET A 3" DIAM. U.S.F.S. ALUMINUM CAPPED PIPE, 30" LONG, WITH MAGNET, MARKED PER B-L-M MANUAL, SEE TYPICAL CAP FOR STANDARD MARKINGS
- SET A 3" DIAM. U.S.F.S. ALUMINUM CAPPED PIPE, 30" LONG, WITH MAGNET, MARKED PER B-L-M MANUAL, SEE TYPICAL CAP FOR STANDARD MARKINGS
- [ ] RECORD BEARING AND/OR DISTANCE, G-L-O, 1880
- ( ) RECORD BEARING AND/OR DISTANCE, HES 165, 1915
- N.F.S.L. = NATIONAL FOREST SYSTEM LANDS BOUNDARY LINE POSTED TO STANDARD
- P CORNER REFERENCE DESIGNATION - SEE SHEETS 3 & 4
- 18 H.E.S. 165 CORNER DESIGNATION

### SURVEYORS CERTIFICATE

THIS PLAT CORRECTLY REPRESENTS A SURVEY MADE BY ME OR UNDER MY DIRECTION IN CONFORMANCE WITH THE STATUTES OF OREGON AND AT THE REQUEST OF THE FOREST SUPERVISOR, WALLOWA-WHITMAN NATIONAL FOREST, DURING OCTOBER 1991 AND APRIL, 1992.

REGISTERED  
PROFESSIONAL  
LAND SURVEYOR

*Ronald E. Stoll 8/92*  
OREGON  
JULY 15, 1983  
RONALD E. STOLL  
2058

JOB NO. 1217-891-OR  
CONTRACT NO. 53-04M3-1-0114  
SHEET 2 OF 4

RONALD E. STOLL, R.L.S. 2058

### SURVEY NARRATIVE

BASIS OF BEARING WAS A SOLAR OBSERVATION TAKEN ON 10/23/1991 AT A POINT 358 FEET SOUTH AND 350 FEET EAST OF THE NE CORNER OF SECTION 16. THE MAGNETIC DECLINATION FOR THIS SURVEY IS 18 1/2' EAST AS DETERMINED FROM A U.S.G.S. TOPO MAP FOR THIS PROJECT AREA.

THIS SURVEY REPRESENTS A RECORD OF THE PARTIAL RETRACEMENT AND/OR SUBDIVISION OF SECTIONS 9, 10, 15, & 16, T6S, R42E, W.M., BAKER COUNTY, OREGON.

THIS SURVEY WAS PERFORMED AT THE REQUEST OF THE FOREST SUPERVISOR, WALLOWA-WHITMAN NATIONAL FOREST, BAKER CITY, OREGON.

THE PURPOSE OF THIS SURVEY WAS TO DETERMINE THE BOUNDARY LINES BETWEEN THE PRIVATE AND PUBLIC LAND ADMINISTERED BY THE U.S. FOREST SERVICE IN SECTION 9, 10, 15, & 16 AND TO POST TO STANDARD THOSE BOUNDARIES.

THE PROCEDURES USED IN THIS SURVEY WERE IN ACCORDANCE WITH THE CONTRACT SPECIFICATIONS, THE 1973 B-L-M MANUAL AND STATE LAW, RESULTING IN AN ERROR OF CLOSURE OF 1 AND 5000 OR BETTER.

THE EQUIPMENT USED ON THIS SURVEY IS KEPT ADJUSTED AND STANDARDIZED. WE USED A SOKKIA SET 2,3 OR 4 TOTAL STATION AND LEAP FROGGED A COMPLETE SET UP AT EACH TRAVERSE STATION OR CONTROLLING CORNER.

LOST OR OBLITERATED CORNERS WERE REESTABLISHED IN ACCORDANCE WITH THE B-L-M MANUAL, A COMPLETE DESCRIPTION OF THE CORNERS FOUND, SET OR REESTABLISHED CAN BE FOUND ON PAGE 3 & 4 OF THIS RECORD OF SURVEY. THE FIELD NOTES FOR THIS SURVEY ARE CONTAINED IN BOOK 1, PAGES 1 - 124 TITLED: SAWDINE CADASTRAL SURVEY.

A PORTION OF  
SECTIONS 9, 10, 15, AND 16  
T 7 S R 42 E W.M.  
BAKER COUNTY, OREGON

---

**RECORD OF SURVEY**

---

RES LAND SURVEYS, INC. 8335 N. PLACITA DADIVOSO  
TUCSON, ARIZONA 85704

FILED May 26, 1993  
BAKER COUNTY SURVEYOR  
SURVEY NO. 7-42-19 (4 sheets)

FILED May 26, 1993  
BAKER COUNTY SURVEYOR  
SURVEY NO. 7-42-19 (4 sheets)