

CERTIFIED RECORD OF LAND CORNER MONUMENTATION

G-25

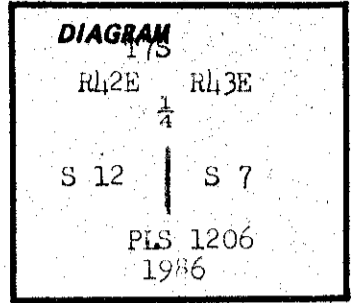
History of original corner establishment:

W. B. Barr conducted the survey of Township 7 South, Range 43 East, W.M., August 29 to September 8, 1881, under GLO Contract No. 388, dated May 7, 1881.

The original notes of that survey relative to this corner state the following:

Set stake 4 ft. long, 4 ins. dia., 18 ins. into the ground for 1/4 section corner from which:

- A Pine, 18 ins. dia. bears N. 10° W., at 11 lks. dist.
A Pine, 18 ins. dia. bears N. 15° E. at 29 lks. dist.



Description of corner evidence found:

No evidence was found.

Description of monument and accessories established to perpetuate the original location of this corner:

Set a 2 1/2" x 30" aluminum pipe with a 2 1/2" aluminum cap 27 ins. into the ground. Constructed a 36 in. dia. stone mound around the monument. The cap is marked as shown in the corner diagram. From the corner point:

- A Lodgepole Pine, 12 ins. dia., bears N. 61° E., at 11.0 ft. dist. mkd. 1/4 S7 BT
A Tamarack; 13 ins. dia., bears West, at 13.9 ft. dist. mkd. 1/4 S12 BT.

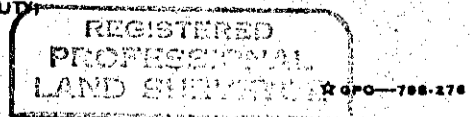
Set a steel fence post 4 ft. from the monument and attached a USFS 54-9 sign. Painted the face of the blaze and a 6 in. band around the bearing trees red. Attached I.D. washer and USFS 54-9 and 54-3 signs to bearing trees. Used 18 1/2° declination on a staff compass for readings to bearing trees. Used steel tape to measure to a nail set in the side of the trees.

Remarks: An old mound of stones was found bearing S. 45° E., at 3 ft. dist. from the apportioned corner position. No bearing trees remains could be found from this point to verify the mound as the true 1/4 corner location. The stones in the mound were painted on the tops and bottoms and therefore were painted before being put in the location which we found them. Perhaps it was constructed by E.A.H. as we have found similar color paint at corners found by him.

This corner was remonumented to USFS specifications on July 15, 1986; witnessed by Tom Fisk and Larry McBroom.

Office of... County Surveyor... County of... Baker
State of... Oregon... I hereby certify that the within instrument was filed in this office
for record on the... day of... 19...
(COUNTY OFFICIAL) by (DEPUTY)

Form R6-7100-57 (9/71)



FILED 9/28/87
BAKER COUNTY SURVEYOR
SERIAL NO. 7-42-10

James D. Hanley
OREGON
SEPTEMBER 21, 1977
JAMES D. HANLEY
1206