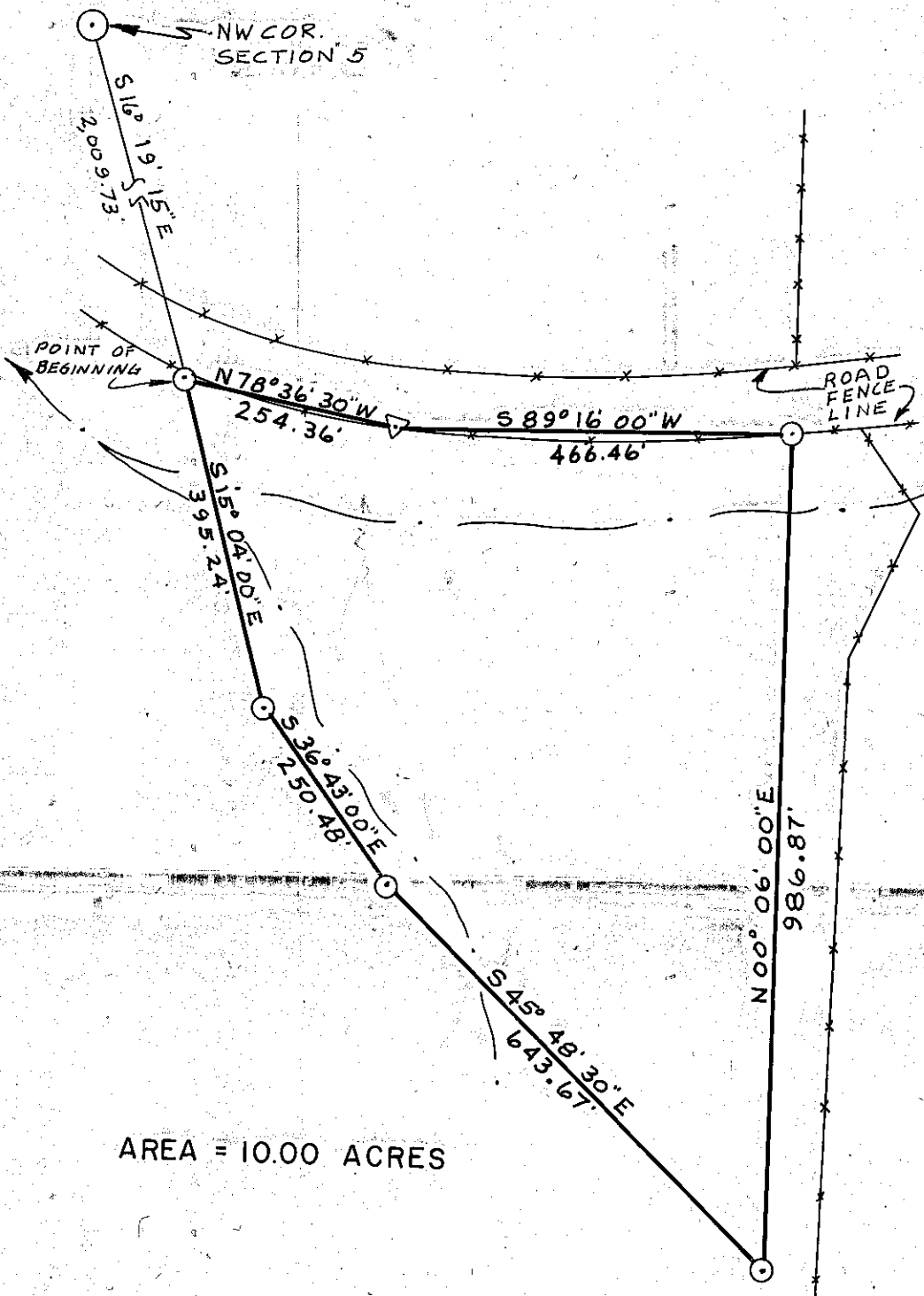


RECORD OF SURVEY FOR CHARLES GREY
 OF A PARCEL OF LAND IN
 SECTION 5, T.7S. R.42E, W.M.



AREA = 10.00 ACRES

SCALE 1" = 200'
 BASIS OF BEARINGS
 SOLAR OBSERVATION



FILED 6-18-74
 BAKER COUNTY SURVEYOR
 SURVEY NO. 7-42-3

SURVEYED FOR CHARLES GREY	
SURVEYED BY TELEK ENGINEERING, LA GRANDE	
SCALE 1" = 200'	DATE: JUNE 6, 1974