





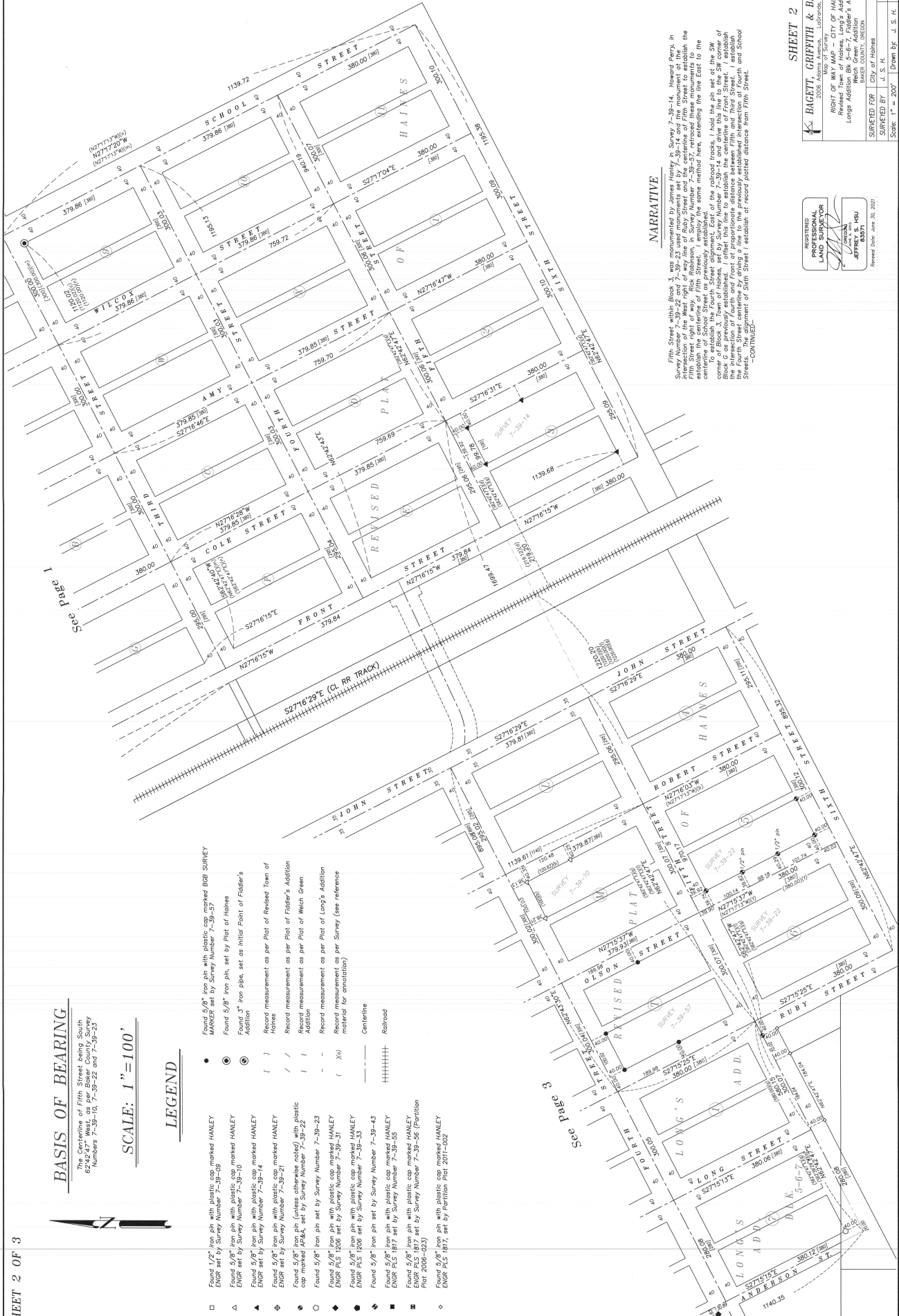
**BASIS OF BEARING**

The Centerline of Fifth Street being South 62°42'47" West, as per Baker County Survey Numbers 7-39-10, 7-39-22 and 7-39-23

SCALE: 1"=100'

**LEGEND**

- Found 1/2" iron pin with plastic cap marked HANLEY ENGR set by Survey Number 7-39-09
- △ Found 5/8" iron pin with plastic cap marked HANLEY ENGR set by Survey Number 7-39-10
- ▲ Found 5/8" iron pin with plastic cap marked HANLEY ENGR set by Survey Number 7-39-14
- ⊕ Found 5/8" iron pin with plastic cap marked HANLEY ENGR set by Survey Number 7-39-21
- ⊙ Found 5/8" iron pin with plastic cap marked HANLEY ENGR set by Survey Number 7-39-22
- Found 5/8" iron pin with plastic cap marked HANLEY ENGR PLS 1206 set by Survey Number 7-39-23
- ◆ Found 5/8" iron pin with plastic cap marked HANLEY ENGR PLS 1206 set by Survey Number 7-39-31
- ◇ Found 5/8" iron pin with plastic cap marked HANLEY ENGR PLS 1206 set by Survey Number 7-39-35
- ◆ Found 5/8" iron pin with plastic cap marked HANLEY ENGR PLS 1206 set by Survey Number 7-39-43
- ◆ Found 5/8" iron pin with plastic cap marked HANLEY ENGR PLS 1206 set by Survey Number 7-39-45
- ◆ Found 5/8" iron pin with plastic cap marked HANLEY ENGR PLS 1206 set by Survey Number 7-39-56 (Partition Plat 2008-04-23)
- ◆ Found 5/8" iron pin with plastic cap marked HANLEY ENGR PLS 1206 set by Survey Plat 2011-02-02
- Found 5/8" iron pin with plastic cap marked BOB SURVEY MARKER set by Survey Number 7-39-59
- ⊙ Found 3" iron pin, set by Plat of Haines Addition
- ⊕ Found 5/8" iron pin, set by Plat of Haines Addition
- ⊙ Found 3" iron pin, set as Initial Point of Fidler's Addition
- ⊕ Record measurement as per Plat of Revised Town of Haines
- ⊙ Record measurement as per Plat of Fidler's Addition
- ⊕ Record measurement as per Plat of Wach Green Addition
- ⊙ Record measurement as per Plat of Long's Addition (material for annotation)
- Centerline
- ++++ Railroad



**NARRATIVE**

Fifth Street, with Block 3, was monumented by James Hainey, in Survey 7-39-14, Howard Perry, in Survey 7-39-10, and the centerline of Fifth Street and the centerline of Fifth Street to establish the intersection of the West right of way line of Ruby Street and the centerline of Fifth Street to establish the centerline of Fifth Street. I employ the same method here, entering the line east to the centerline of School Street as previously established. I hold the pin set at the SW corner of Block 3, Town of Haines, set by Survey Number 7-39-14 and drive this line to the SW corner of the intersection of Fourth and Front of proportionate distance between Fifth and Third Street. I establish the Fourth Street centerline by driving a line to the previously established intersection at Fourth and School Street (corner of 3rd Street) I establish a record plotted distance from Fifth Street.

—CONTINUED—

REGISTERED PROFESSIONAL LAND SURVEYOR  
 State of Oregon License No. 1051  
 BAKER COUNTY, OREGON  
 BACETT, GRIFFITH & BLACKMAN  
 2008 Astoria Avenue, Astoria, Oregon

**SHEET 2 OF 3**  
 RIGHT OF WAY MAP - CITY OF HAINES  
 Revised Town of Haines, Long's Addition,  
 Long's Addition Block 3, Fidler's Addition,  
 Long's Addition Block 3, Wach Green Addition,  
 BAKER COUNTY, OREGON  
 SURVEYED BY J. S. H.  
 Scale: 1" = 200' Drawn by J. S. H. July 2019

FILED August 13, 2019  
 BAKER COUNTY SURVEYOR  
 BAKER NO. 7-39-44

**BASIS OF BEARING**

The Schedules of Fifth Street being South  
62°42'47" West, as per Baker County Survey  
Numbers 7-39-10, 7-39-22 and 7-39-23

SCALE: 1" = 100'

**LEGEND**

- Found 1/2" iron pin with plastic cap marked HANLEY  
ENGR set by Survey Number 7-39-09
- △ Found 3/8" iron pin with plastic cap marked HANLEY  
ENGR set by Survey Number 7-39-10
- ▲ Found 3/8" iron pin with plastic cap marked HANLEY  
ENGR set by Survey Number 7-39-14
- ◆ Found 3/8" iron pin with plastic cap marked HANLEY  
ENGR set by Survey Number 7-39-21
- Found 3/8" iron pin (unless otherwise noted) with plastic  
cap marked HANLEY, set by Survey Number 7-39-22
- Found 3/8" iron pin set by Survey Number 7-39-23
- ◊ Found 3/8" iron pin with plastic cap marked HANLEY  
ENGR PLS 1206 set by Survey Number 7-39-31
- ◆ Found 3/8" iron pin with plastic cap marked HANLEY  
ENGR PLS 1206 set by Survey Number 7-39-33
- ◆ Found 3/8" iron pin set by Survey Number 7-39-43
- ◆ Found 3/8" iron pin with plastic cap marked HANLEY  
ENGR PLS 1817 set by Survey Number 7-39-55
- ◆ Found 3/8" iron pin with plastic cap marked HANLEY  
ENGR PLS 1817 set by Survey Number 7-39-56 (Partition  
Plot 2008-0223)
- Found 3/8" iron pin with plastic cap marked HANLEY  
ENGR PLS 1817, set by Partition Plot 2417-0202

- Found 5/8" iron pin with plastic cap marked BGR SURVEY  
MARKER set by Survey Number 7-39-37
- Found 5/8" iron pin, set by Plat of Haines  
Addition
- Found 1" iron pipe, set as initial Point of Fidler's  
Addition
- ( ) Record measurement as per Plat of Revised Town of  
Haines
- / / Record measurement as per Plat of Fidler's Addition
- / / Record measurement as per Plat of Welch Green  
Addition
- - Record measurement as per Plat of Long's Addition
- ( X ) Record measurement as per Survey (see reference  
material for annotation)

- Centrifuge
- +++++ Railroad

**NARRATIVE**

The West right of way line of Anderson Road was monumented by Survey 7-39-31 and I held monuments set by said survey. This is harmonious with the pin set on an oblique line of the Second Street right of way on the West side of the track. I hold the cantline monuments set by 7-39-33 at Long Street and Olson Street. Addition, do not match with these cantline monuments. It appears as though James Hanley had an erroneous pin at the Northwest corner of Block 5 of Long's Addition to set. This pin does not appear to amend Survey Number 7-39-9. I can find no trace of the Block 5 pin at the NE corner of Block 5, but show the location of existing pins in Block 5.

The monuments set in Block F, despite being done at the same time as the monuments set in Block E, were not monumented by the same survey. The location of the measured distance. The map of survey indicates that record distance was used and meet the survey Street cantline 350.19 feet to establish the First Street right of way. The cantline of John Street parallel with and 385 feet from the centerline of the railroad track as per Revised Plat of Haines. I establish the intersection of Ruby Street and Second Street at proportionate Fifth Street and Second Street established. I establish the intersections along Third and Fourth Street by proportionate measure in the North/South direction. Doing so is harmonious with the monuments set in this survey. Many intersections in the plat are not shown on this survey. Many intersections in the plat were of record, these were not considered in the course of this survey. I find no other unusual conditions with this survey.



**BAGETT, GRIFFITH & BLACKMAN**  
2005 Adams Avenue, LaGrande, Oregon  
RIGHT OF WAY MAP - CITY OF HAINES  
Revised Town of Haines, Long's Addition,  
Long's Addition, Welch Green Addition,  
Welch Green Addition  
Baker County, Oregon

SURVEYED FOR: City of Haines  
SURVEYED BY: J. S. H.  
Scale: 1" = 100'  
Drawn by: J. S. H. July 2019

FILED August 13, 2019  
Baker County Superior Court  
Survey No. 7-39-56