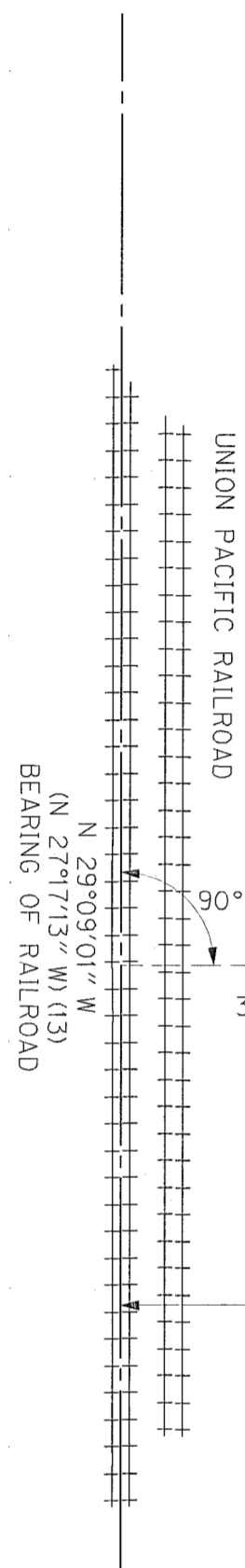
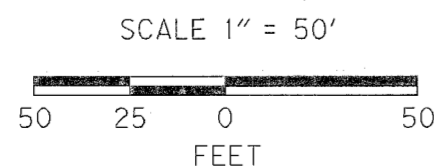
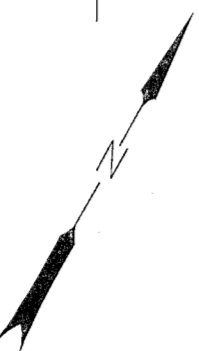


NE 1/4 SEC 33 T7S R39E WM

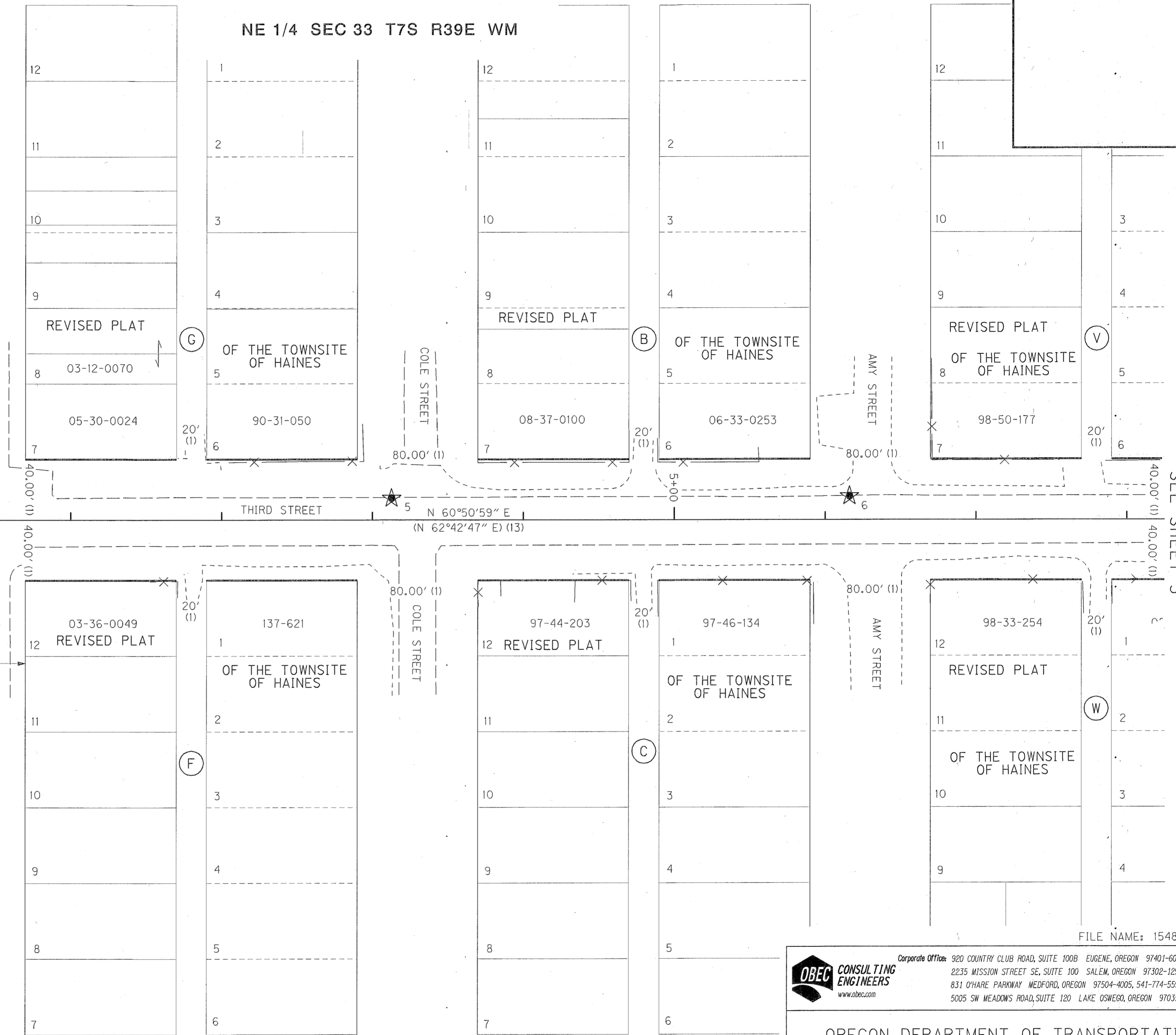


THIS POINT BEARS
N 35°13'17" W
3,366.54' FROM
THE SE COR SEC
33, T7S R39E WM

219.23'
(219.12') (7)
(219.34') (13)



LEGEND	
(X)	RECORD DATA PER REFERENCE ON SHEET 1
★	SET GPS STATION
—	RIGHT-OF-WAY
—	PROPERTY LINE
-X-	EXISTING FENCE
---	EDGE OF PAVEMENT
----	EDGE OF GRAVEL



SEE SHEET 3

FILE NAME: 15481ret.dgn

OBEC CONSULTING ENGINEERS
www.obec.com

Corporate Offices: 920 COUNTRY CLUB ROAD, SUITE 100B EUGENE, OREGON 97401-6089, 541-683-6090
2235 MISSION STREET SE, SUITE 100 SALEM, OREGON 97302-1295, 503-589-4100
831 O'HARE PARKWAY MEDFORD, OREGON 97504-4005, 541-774-5591
5005 SW MEADOWS ROAD, SUITE 120 LAKE OSWEGO, OREGON 97035, 503-620-6103

OREGON DEPARTMENT OF TRANSPORTATION

CENTERLINE RESOLUTION, HORIZONTAL CONTROL AND RECOVERY SURVEY
THIRD STREET: US-30 - SCHOOL STREET SIDEWALKS (HAINES)
BAKER COUNTY

ODOT REGION 5
3012 ISLAND AVE.
LA GRANDE, OR 97850

APRIL 14, 2009
SCALE 1"=50'
SHEET 2 OF 3

DESIGNED: B. ELITHORP
DRAWN: A. DUPLANT

PROJ. NO. 19-84.30
CHK'D: J. COLTON

REGISTERED PROFESSIONAL LAND SURVEYOR

Bret N. Elithorp

OREGON
JAN. 14, 2003
BRET N. ELITHORP
#63148

RENEWAL DATE: DEC. 31, 2009
SIGNED: 4/15/09

FILED April 20, 2009
BAKER COUNTY SURVEYOR
SURVEY NO. 7-39-59

