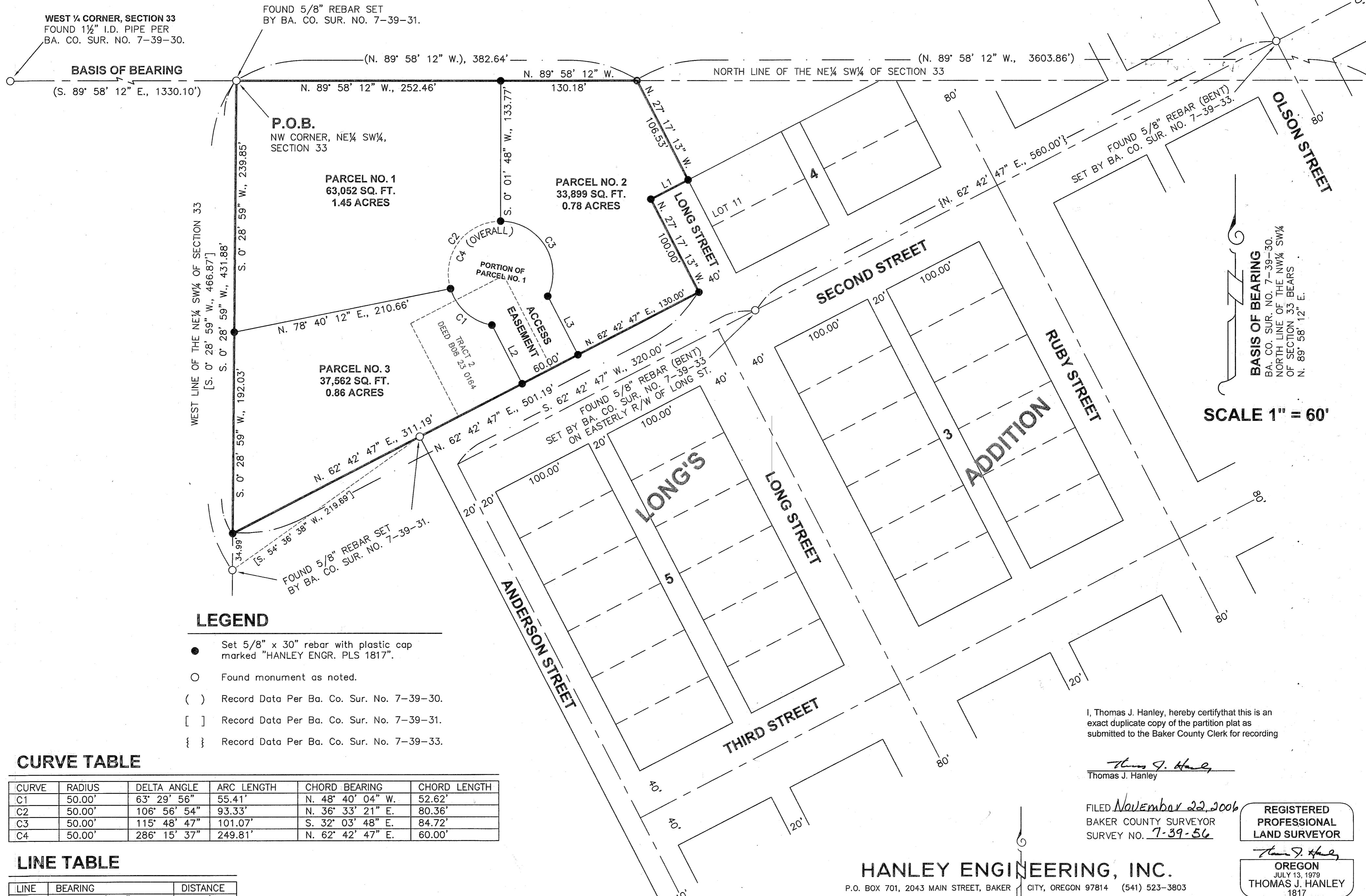


**PARTITION PLAT NO. P-2006-023**



**LEGEND**

- Set 5/8" x 30" rebar with plastic cap marked "HANLEY ENGR. PLS 1817".
- Found monument as noted.
- ( ) Record Data Per Ba. Co. Sur. No. 7-39-30.
- [ ] Record Data Per Ba. Co. Sur. No. 7-39-31.
- { } Record Data Per Ba. Co. Sur. No. 7-39-33.

**CURVE TABLE**

CURVE	RADIUS	DELTA ANGLE	ARC LENGTH	CHORD BEARING	CHORD LENGTH
C1	50.00'	63° 29' 56"	55.41'	N. 48° 40' 04" W.	52.62'
C2	50.00'	106° 56' 54"	93.33'	N. 36° 33' 21" E.	80.36'
C3	50.00'	115° 48' 47"	101.07'	S. 32° 03' 48" E.	84.72'
C4	50.00'	286° 15' 37"	249.81'	N. 62° 42' 47" E.	60.00'

**LINE TABLE**

LINE	BEARING	DISTANCE
L1	N. 62° 42' 47" E.	40.00'
L2	N. 27° 17' 13" W.	63.00'
L3	S. 27° 17' 13" E.	63.00'

**BASIS OF BEARING**  
 BA. CO. SUR. NO. 7-39-30.  
 NORTH LINE OF THE NW 1/4 SW 1/4  
 OF SECTION 33 BEARS  
 N. 89° 58' 12" E.

**SCALE 1" = 60'**

I, Thomas J. Hanley, hereby certify that this is an exact duplicate copy of the partition plat as submitted to the Baker County Clerk for recording

*Thomas J. Hanley*  
 Thomas J. Hanley

FILED *November 22, 2006*  
 BAKER COUNTY SURVEYOR  
 SURVEY NO. *7-39-56*

**REGISTERED PROFESSIONAL LAND SURVEYOR**

*Thomas J. Hanley*  
 OREGON  
 JULY 13, 1979  
 THOMAS J. HANLEY  
 1817

**HANLEY ENGINEERING, INC.**  
 P.O. BOX 701, 2043 MAIN STREET, BAKER CITY, OREGON 97814 (541) 523-3803

Renews June 30, 2007