

REFERENCES

Baker County Survey No. 7-39-13
 Baker County Survey No. 7-39-21
 Baker County Survey No. 7-39-43
 Revised Plat of the Townsite of Haines, filed
 August 31, 1892 in Plat Book 1, Page 43

SCALE: 1" = 100'

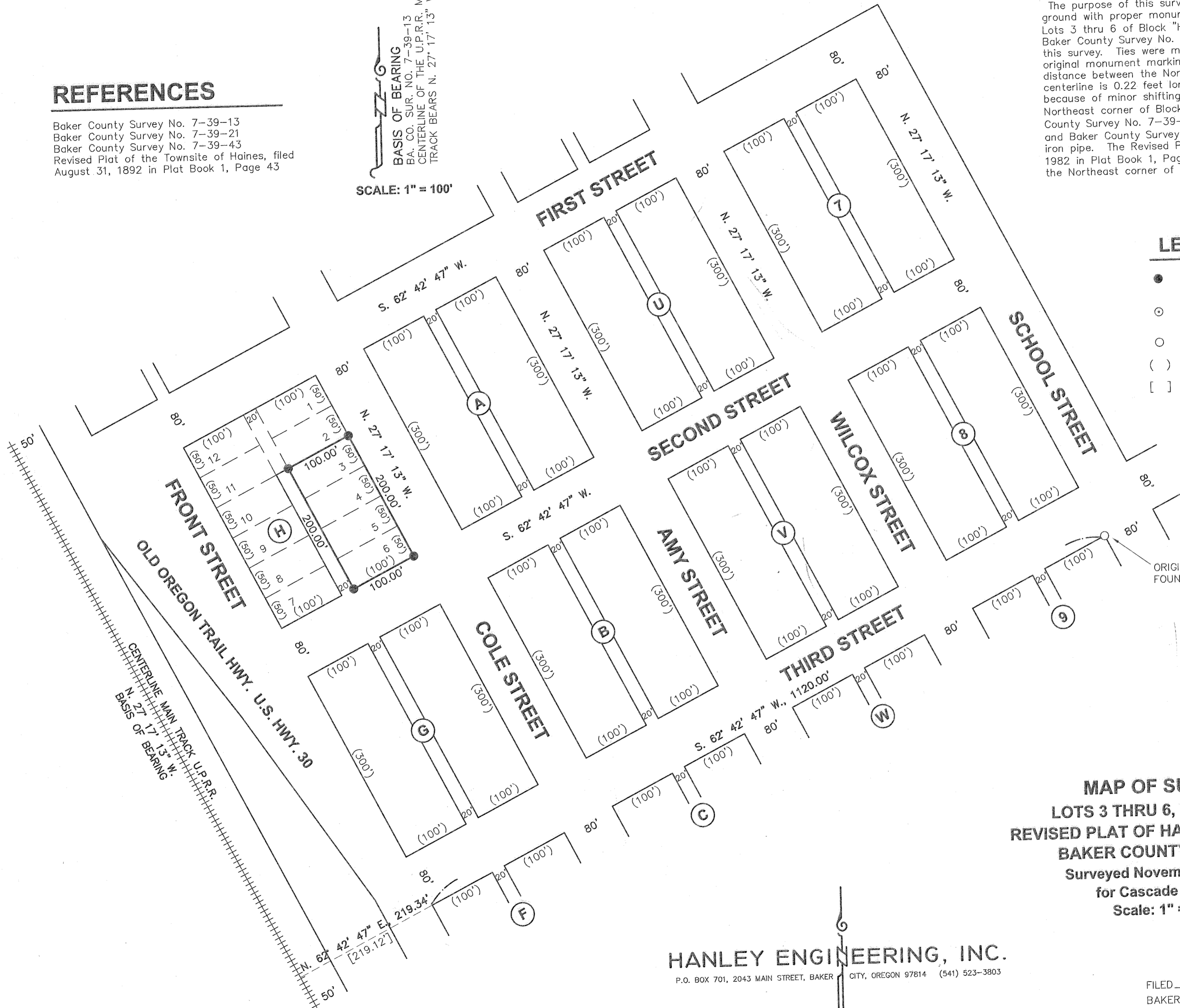
BASIS OF BEARING
 BA. CO. SUR. NO. 7-39-13
 CENTERLINE OF THE U.P.R.R. MAIN
 TRACK BEARS N. 27° 17' 13" W.

NARRATIVE

The purpose of this survey for Cascade Utilities is to mark on the ground with proper monumentation the corners of a parcel consisting of Lots 3 thru 6 of Block "H", Revised Plat of the Townsite of Haines. Baker County Survey No. 7-39-13 was held as the basis of bearing for this survey. Ties were made to U.P.R.R. mainline rails as well as the original monument marking the Northeast corner of Block 9. The distance between the Northeast corner of Block 9 and the U.P.R.R. centerline is 0.22 feet longer than prior surveys. This is believed to be because of minor shifting of the rails during rail replacement. The Northeast corner of Block 9 was found to be a 5/8" iron rod. Baker County Survey No. 7-39-21 erroneously calls this corner a 1/2" iron pin and Baker County Survey No. 7-39-43 erroneously calls this corner a 1/2" iron pipe. The Revised Plat of the Townsite of Haines, filed August 31, 1892 in Plat Book 1, Page 43 states that a 5/8" iron rod was set at the Northeast corner of Block 9.

LEGEND

- Set 5/8" x 30" rebar with plastic cap marked "HANLEY ENGR. PLS 1817".
- ⊙ Found, 5/8" rebar with plastic cap marked "HANLEY ENGRG".
- Found, monument as noted.
- () Plat Distance.
- [] Record Data Per Ba. Co. Sur. No. 7-39-13.



ORIGINAL MONUMENT
 FOUND 5/8" IRON ROD

MAP OF SURVEY
LOTS 3 THRU 6, BLOCK "H",
REVISED PLAT OF HAINES TOWNSITE,
BAKER COUNTY, OREGON
 Surveyed November 29, 2004
 for Cascade Utilities
 Scale: 1" = 100'

HANLEY ENGINEERING, INC.

P.O. BOX 701, 2043 MAIN STREET, BAKER CITY, OREGON 97814 (541) 523-3803

REGISTERED
 PROFESSIONAL
 LAND SURVEYOR

Thomas J. Hanley
 OREGON
 JULY 13, 1979
 THOMAS J. HANLEY
 1817

FILED March 4, 2005
 BAKER COUNTY SURVEYOR
 SURVEY NO. 7-39-55

Reopens June 30, 2005