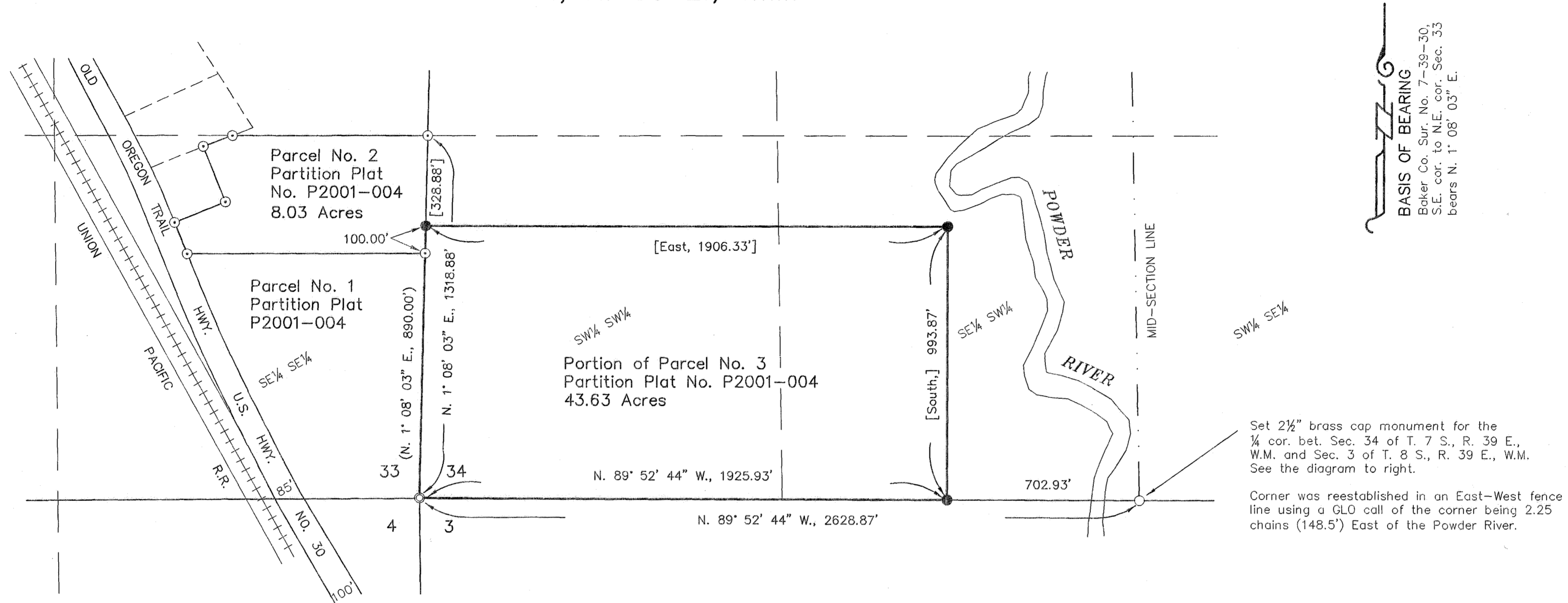


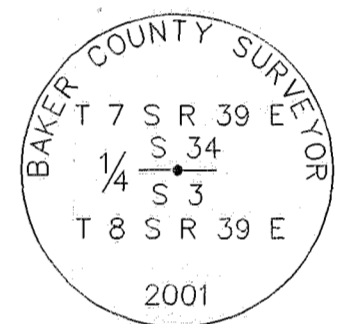
T. 7 S., R. 39 E., W.M.



BASIS OF BEARING
Baker Co. Sur. No. 7-39-30
S.E. cor. to N.E. cor. Sec. 33
bears N. 1° 08' 03" E.

Set 2 1/2" brass cap monument for the 1/4 cor. bet. Sec. 34 of T. 7 S., R. 39 E., W.M. and Sec. 3 of T. 8 S., R. 39 E., W.M. See the diagram to right.

Corner was reestablished in an East-West fence line using a GLO call of the corner being 2.25 chains (148.5') East of the Powder River.



NARRATIVE

The purpose of this survey for Baker County is to mark on the ground with proper monumentation the corners of the parcel described in Baker County Deed B0115 0088. The South 1/4 corner of Section 34 was monumented this survey. The reconstruction of this corner position is as shown hereon.

REFERENCES

Baker County Partition Plat No. P2001-004.
Baker County Survey No. 7-39-30.
Baker County Deed B0115 0088.

LEGEND

- Set 5/8" rebar with plastic cap marked "HANLEY ENGR. PLS 1817".
- Found 5/8" rebar with plastic cap marked "HANLEY ENGR. PLS 1817", set by Partition Plat P2001-004.
- Set 2 1/2" brass cap monument as noted.
- ⊙ Found, brass cap monument.
- () Record data per Ba. Co. Partition Plat P2001-004.
- [] Record data per Ba. Co. Deed No. B0115 0088.

HANLEY ENGINEERING, INC.

P.O. BOX 701, 2043 MAIN STREET, BAKER CITY, OREGON 97814 (541) 523-3803

MAP OF SURVEY

SECTION 34, T. 7 S., R. 39 E., W.M.
BAKER COUNTY, OREGON

Surveyed May 18 thru 22, 2001

for Baker County
Scale: 1" = 300'

**REGISTERED
PROFESSIONAL
LAND SURVEYOR**

Thomas J. Hanley

OREGON
JULY 13, 1979
THOMAS J. HANLEY
1817

FILED June 29, 2001
BAKER COUNTY SURVEYOR
SURVEY NO. 7-39-46

Renews June 30, 2003