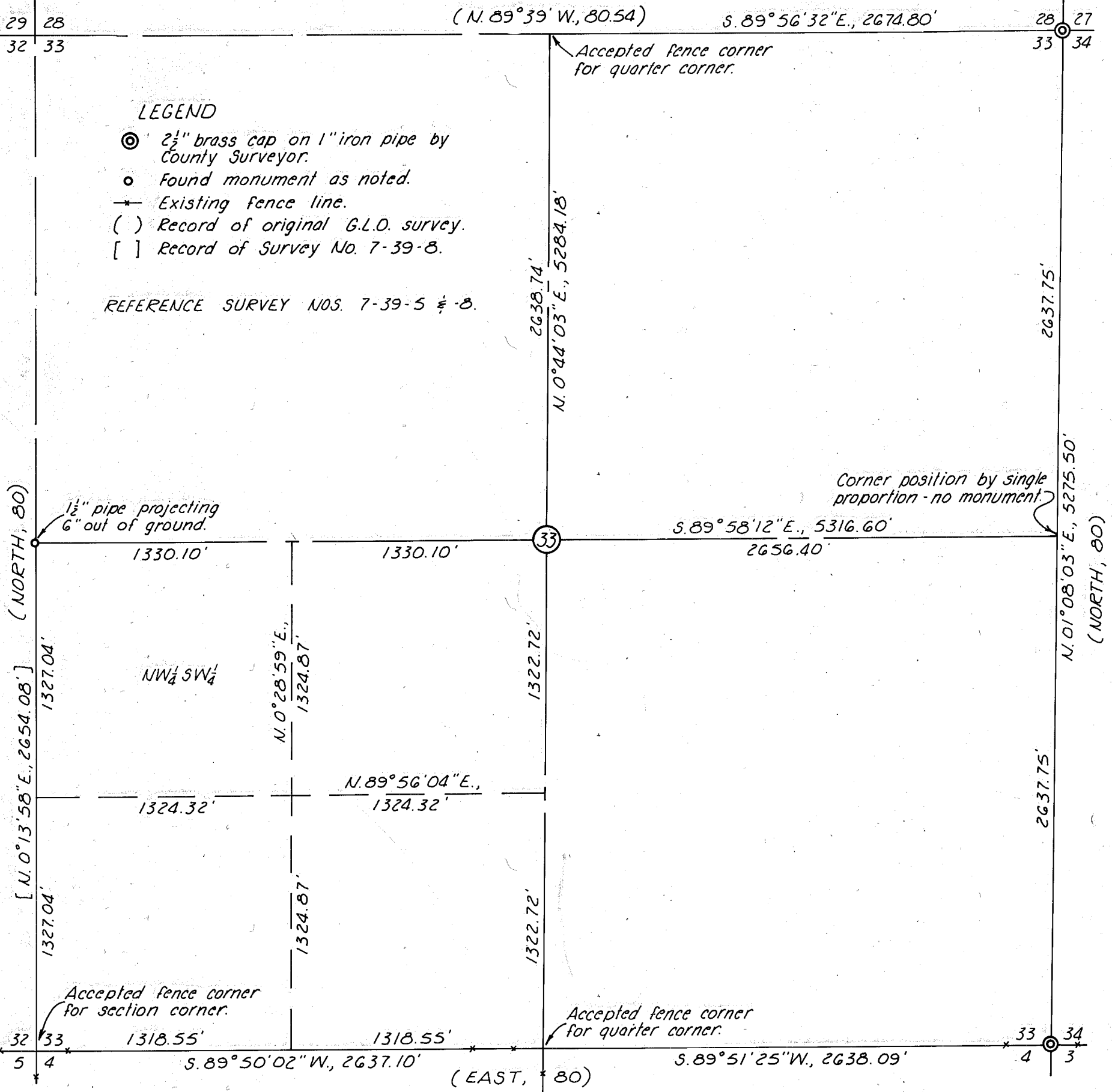


Meridian by Solar Observation,
Survey No. 7-39-5.



SURVEY NARRATIVE

This survey was performed for the purpose of locating the East line of the NW 1/4 SW 1/4 of Section 33, T.7 S., R.39 E., W.M., preliminary to a survey in the NW 1/4 SW 1/4 and the NE 1/4 SW 1/4 of said Section 33. The Northeast and Southeast section corners were each monumented previously with a 2 1/2-inch brass cap on a 1-inch iron pipe and recorded under survey nos. 7-39-27 and 7-39-29 respectively. The East quarter section corner was not recovered and its position determined by single proportionate measure between adjacent found section corners; no monument was established this survey. The Southwest section corner and the North and South quarter section corner positions have been perpetuated with fence corners which were accepted as true corner positions. The West quarter section corner is monumented with a 1 1/2-inch iron pipe projecting 6 inches out of the ground, origin unknown. From the above described corner recovery, Section 33 was subdivided by prescribed survey methods.

REGISTERED
PROFESSIONAL
LAND SURVEYOR

James D. Hanley

OREGON
SEPTEMBER 23, 1977
JAMES D. HANLEY
1206

FILED Jan. 9, 1984
BAKER COUNTY SURVEYOR
SURVEY NO. 7-39-30

RECORD OF SURVEY PLAT
THE PARTIAL SUBDIVISION OF SECTION 33, T.7 S., R.39 E. W.M.
Surveyed March, 1980 and Feb., 1983 Scale 1"=600'
For Dale Lethlean and Dick Prowell