

A parcel of land in the East ½, Section 35, T7S, R39E, W.M., Baker County, Oregon beginning at a 5/8" x 30" steel pin; being S09° 07' 35" West, 3669.64 feet from the northeast corner of Section 34, T7S, R39E, W.M.

Thence N48° 20' 01" East, 798.54 feet to a steel pin on the southwest right-of-way line of Baker County Road No. 690. Said right-of-way line being parallel to and at a right angle distance of 30 feet from the centerline of the existing county road.

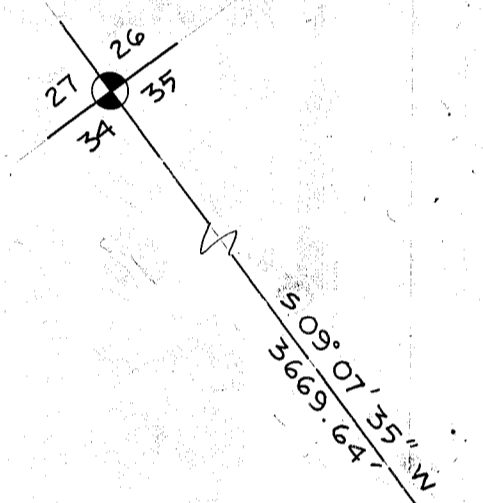
Thence N52° 45' 04" West, 1011.73 feet more or less, along the southwest right-of-way line of said county road to a steel pin.

Thence N42° 04' 34" West, 1087.27 feet more or less, along the southwest right-of-way line of said county road to a steel pin.

Thence S48° 18' 29" West, 300.11' feet to a steel pin,
 Thence S41° 41' 41" East, 299.99 feet to a steel pin,
 Thence S48° 18' 28" West, 859.53 feet to a steel pin,
 Thence S32° 47' 21" East, 185.54 feet to a steel pin,
 Thence S43° 52' 05" East, 430.62 feet to a steel pin,
 Thence S68° 39' 16" East, 193.00 feet to a steel pin,
 Thence N89° 41' 25" East, 294.14 feet to a steel pin,
 Thence S72° 51' 40" East, 311.35 feet to a steel pin,
 Thence S55° 20' 29" East, 331.98 feet to a steel pin,
 Thence S49° 01' 35" East, 212.49 feet more or less, to the Beginning Point.

All steel pins being 5/8" x 30" steel reinforcing bars with cap marked A·P & A.

Containing 42.60± acres.



LEGEND

- SET 5/8" x 30" STEEL PIN (REBAR) W/CAP MARKED A·P & A.
- FENCE
- ⊙ FOUND MONUMENT OF RECORD BRASS CAP MARKED C.S. 1975

BASIS OF BEARING

SOLAR OBSERVATION
SEPTEMBER 1, 1978

REGISTERED
PROFESSIONAL
LAND SURVEYOR
Barry B. Barbour
OREGON
OCT. 17, 1975
BARRY B. BARBOUR
1051

SURVEY OF A PORTION OF THE EAST
HALF OF SECTION 34, T7S, R39E, W.M.
BAKER CO. OREGON

FOR: CITY OF HAINES

SCALE:
1" = 100'
DATE:
SEPT. '78

**apanderson
perry**
& associates, inc.
engineering • surveying • materials testing
LA GRANDE & ENTERPRISE • OREGON

SHEET NO.
1/1

FILED Jan. 9, 1979
BAKER COUNTY SURVEYOR
SURVEY NO. 7-39-11