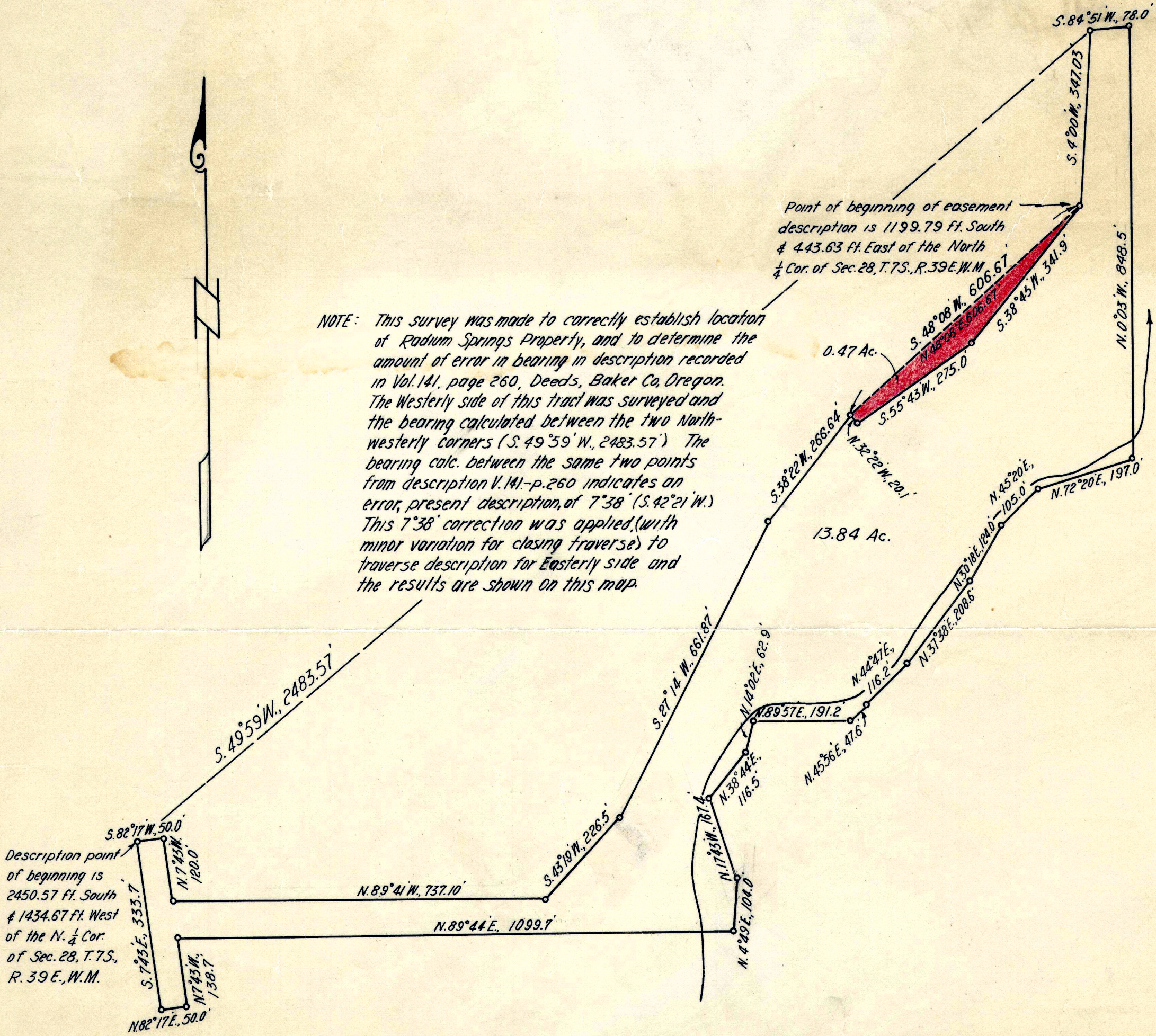


NOTE: This survey was made to correctly establish location of Radium Springs Property, and to determine the amount of error in bearing in description recorded in Vol. 141, page 260, Deeds, Baker Co, Oregon. The Westerly side of this tract was surveyed and the bearing calculated between the two North-westerly corners (S. 49° 59' W., 2483.57') The bearing calc. between the same two points from description V. 141-p. 260 indicates an error, present description, of 7° 38' (S. 42° 21' W.) This 7° 38' correction was applied (with minor variation for closing traverse) to traverse description for Easterly side and the results are shown on this map.



MAP OF RADIUM SPRINGS PROPERTY TO ACCOMPANY DESCRIPTION FOR EASEMENT (SHADED TRACT) AND DEED

Surveyed April 30, 1955
SCALE 1" = 200'



FILED May 27, 1955
BAKER COUNTY SURVEYOR
SURVEY NO. 7-39-1