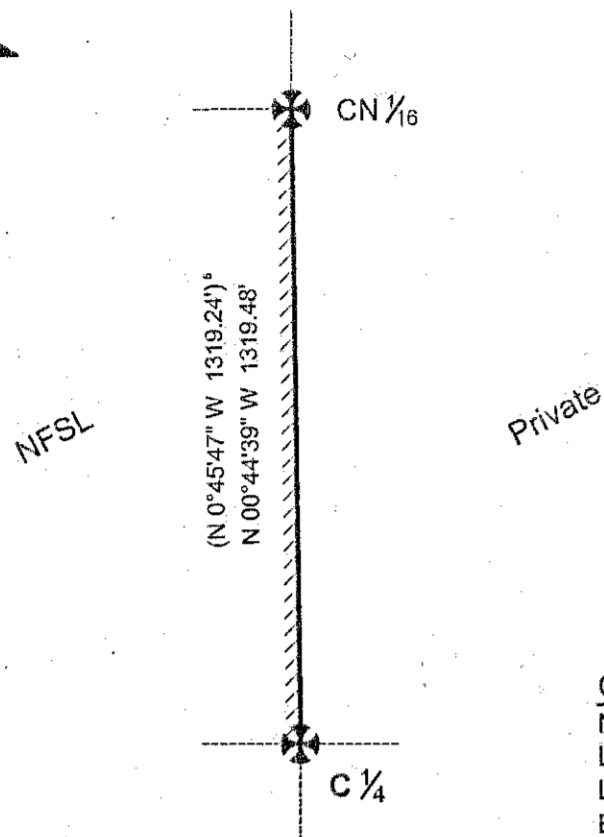


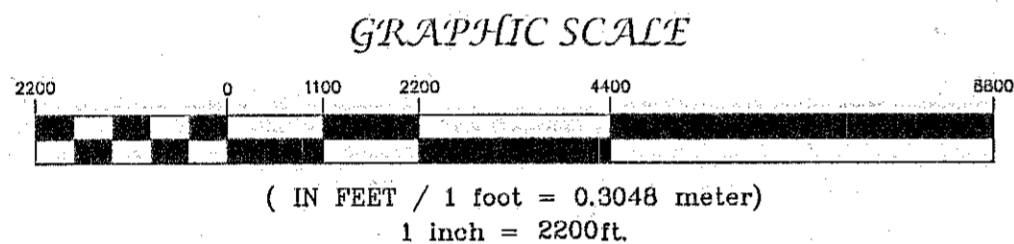
Line CN1/16 - C1/4
Sec. 6, T6S, R38E

Scale: 1" = 400'



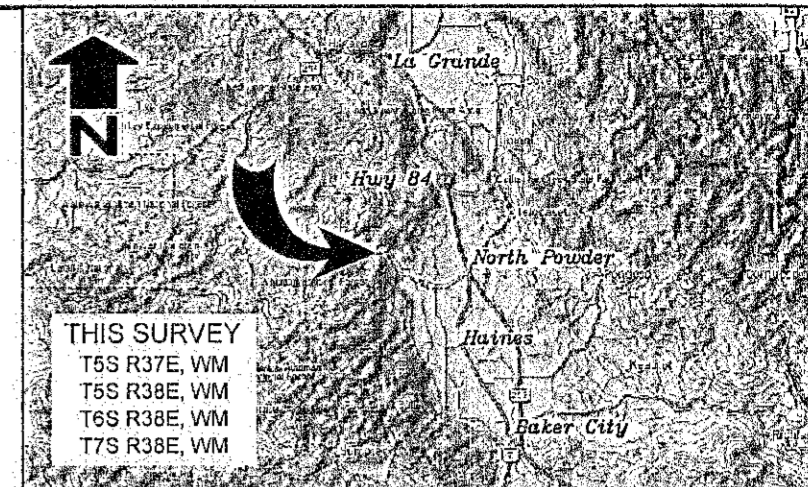
Geographic Position (SC Secs. 31-32)

NAD '83 (CORS 2011)
Latitude = N 45°04'43.94"
Longitude = W 118°05'45.49"
Ellip. Height (ft.) = 4906.41



Record of Survey

East Face Boundary Cadastral
Wallowa-Whitman National Forest
T5S, R37E, Sec. 36; T5S, R38E, Secs. 3-4,
9-10, 15-16, 21-22, 27-28 & 31-33, WM
Baker & Union Counties, OR



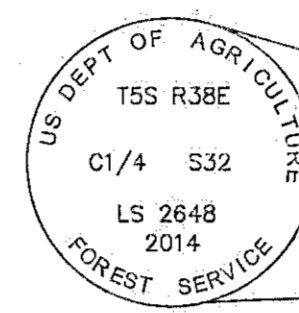
THIS SURVEY
T5S R37E, WM
T5S R38E, WM
T6S R38E, WM
T7S R38E, WM

VICINITY MAP

Based on DeLorme XMap 6.0
Scale: 1" = ± 20 miles

LEGEND

- Cadastral monument of record recovered and accepted this survey. See individual Corner Record for description of found condition and any refurbishment.
- Original Cadastral monument of record recovered this survey. Remonumented with 3/4 ins. diam. alum. cap on 2 1/2 ins. diam. by 30 ins. long alum. pipe, with clear DEEP-1 magnet at base. See individual Corner Record for description of corner.
- Reestablished position in compliance with the BLM Manual of Survey Instructions, at proportionate positions and C1/4 intersection points. Set a 3/4" alum. cap on 2 1/2" diam. by 30" long alum. pipe, with clear DEEP-1 magnet at base. See individual Corner Record for description of corner.
- Original cadastral monument of record, searched for, not recovered this survey.
- Original cadastral monument of record recovered this survey, as described hereon.
- () Record informational calls from GLO Contract No. 102, approved January 12, 1864.
- () Record informational calls from GLO Contract No. 445, approved December 5, 1882.
- () Record informational calls from GLO Contract No. 388, approved December 31, 1881.
- () Record informational calls from Survey No. 95-1979, by Barry B. Barbour, LS 1051.
- () Record informational calls from Survey No. 48-1980, by Duane I. Griffith, LS 644.
- () Record informational calls from Survey No. 49-1980, by Barry B. Barbour, LS 1051.

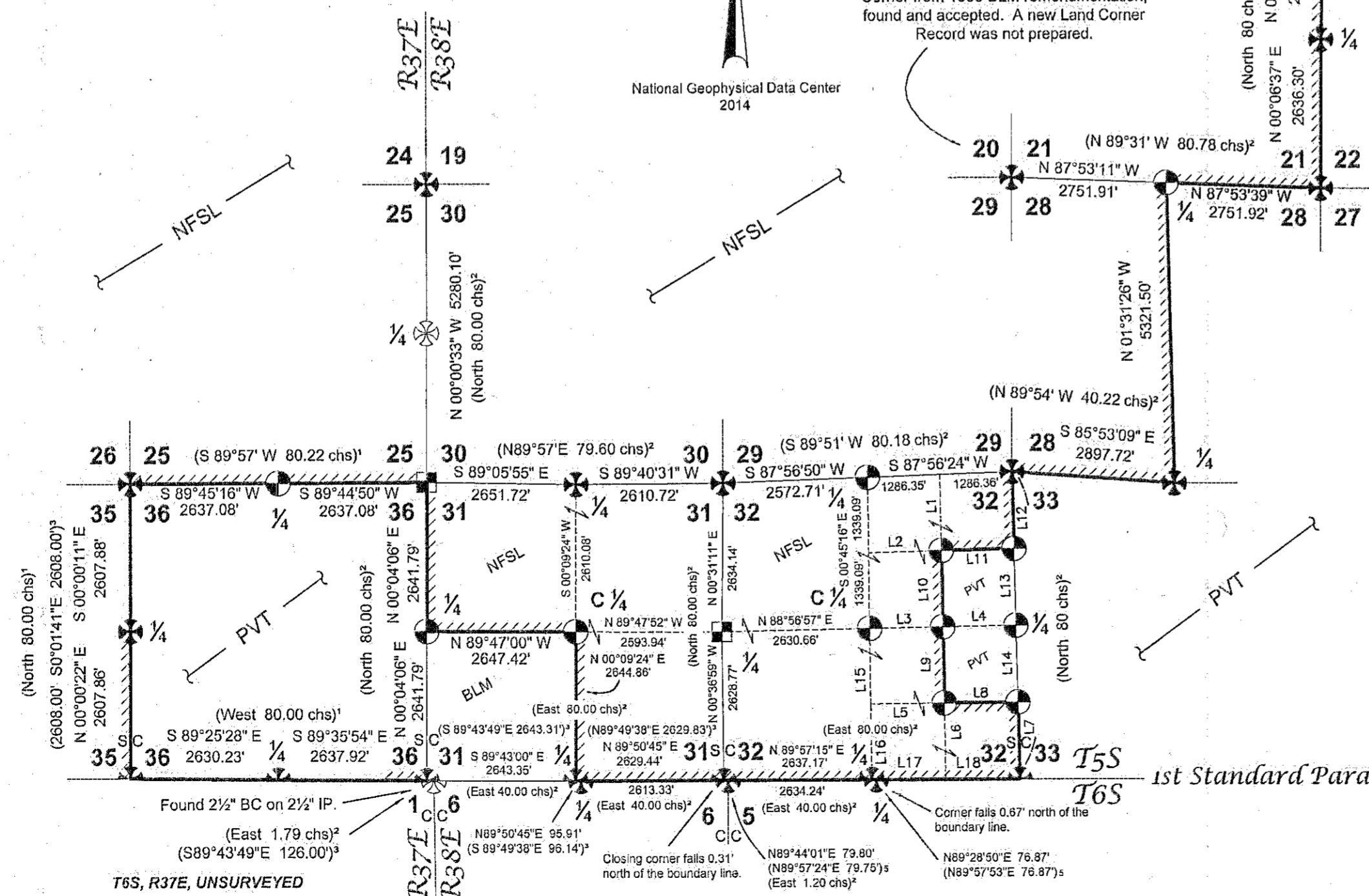


- NFSL National Forest System Lands
- PVT Private Lands
- BLM Bureau of Land Management Lands
- Section Line
- Subdivision Line
- Post and Mark: Survey Line, posted line with steel "T" fence posts and USFS signs at intervals of 200 feet or intervisible and blazed trees with red paint, quarter blazes on USFS and face blazes on private. Through corners, added ±5 ft. and ±50 ft. posts, per USFS contract specs.
- Post and Mark: Maintenance Line, posted line with steel "T" fence posts and USFS signs at intervals of 200 feet or intervisible and blazed trees with red paint, quarter blazes on USFS and face blazes on private. Through corners, added ±5 ft. and ±50 ft. posts, per USFS contract specs.

LINE	BEARING	DISTANCE
L1	S 01°05'41" E	1350.27'
L2	N 88°26'38" E	1294.17'
L3	N 88°56'12" E	1302.08'
L4	S 88°55'59" W	1302.08'
L5	N 89°27'42" E	1310.08'
L6	N 01°05'42" W	1349.40'
L7	N 01°25'46" W	1361.43'
L8	S 89°27'16" W	1310.08'
L9	S 01°05'42" E	1349.48'
L10	N 01°05'41" W	1350.19'
L11	S 88°26'13" W	1294.17'
L12	S 01°25'46" W	1361.42'
L13	S 01°25'46" E	1361.43'
L14	N 01°25'46" W	1361.42'
L15	S 00°45'17" E	1337.49'
L16	N 00°45'17" W	1337.50'
L17	N 89°58'35" E	1318.20'
L18	S 89°58'22" W	1318.20'

REGISTERED
PROFESSIONAL
LAND SURVEYOR
W. R. Wells
OREGON
July 22, 1977
WILLIAM R. WELLS
1106
Renewal Date: June 30, 2016

REGISTERED
PROFESSIONAL
LAND SURVEYOR
DECEASED
OREGON
January 18, 1994
RON C. WALTER
2648
Renewal Date: June 30, 2016



FILED Feb. 25, 2015
BAKER COUNTY SURVEYOR
SURVEY NO. SEE SHEET 2
for Baker Co.

East Face Boundary - Cadastral Survey
Wallowa-Whitman National Forest

LOCATED WITHIN
T6S, R38E, Sec. 6; T5S, R37E, Sec. 36; T7S, R38E, Sec. 5
T5S, R38E, Secs. 3-4, 9-10, 15-16, 21-22, 27-28, & 31-33
Willamette Meridian, Baker & Union Counties, Oregon

Wallowa Associates
303 S.E. Alamo Street
Enterprise, Oregon 97828
(541) 426-9049

SCALE 1" = 2200'	SHEET No. 1 of 2	DATE OF SURVEY Beginning: 6/11/2014 Ending: 10/18/2014
DRAWN BY KLP	CHECKED WRW/BMJ	PROJECT No. WA 1091-07/2419
DATE 2/2015		