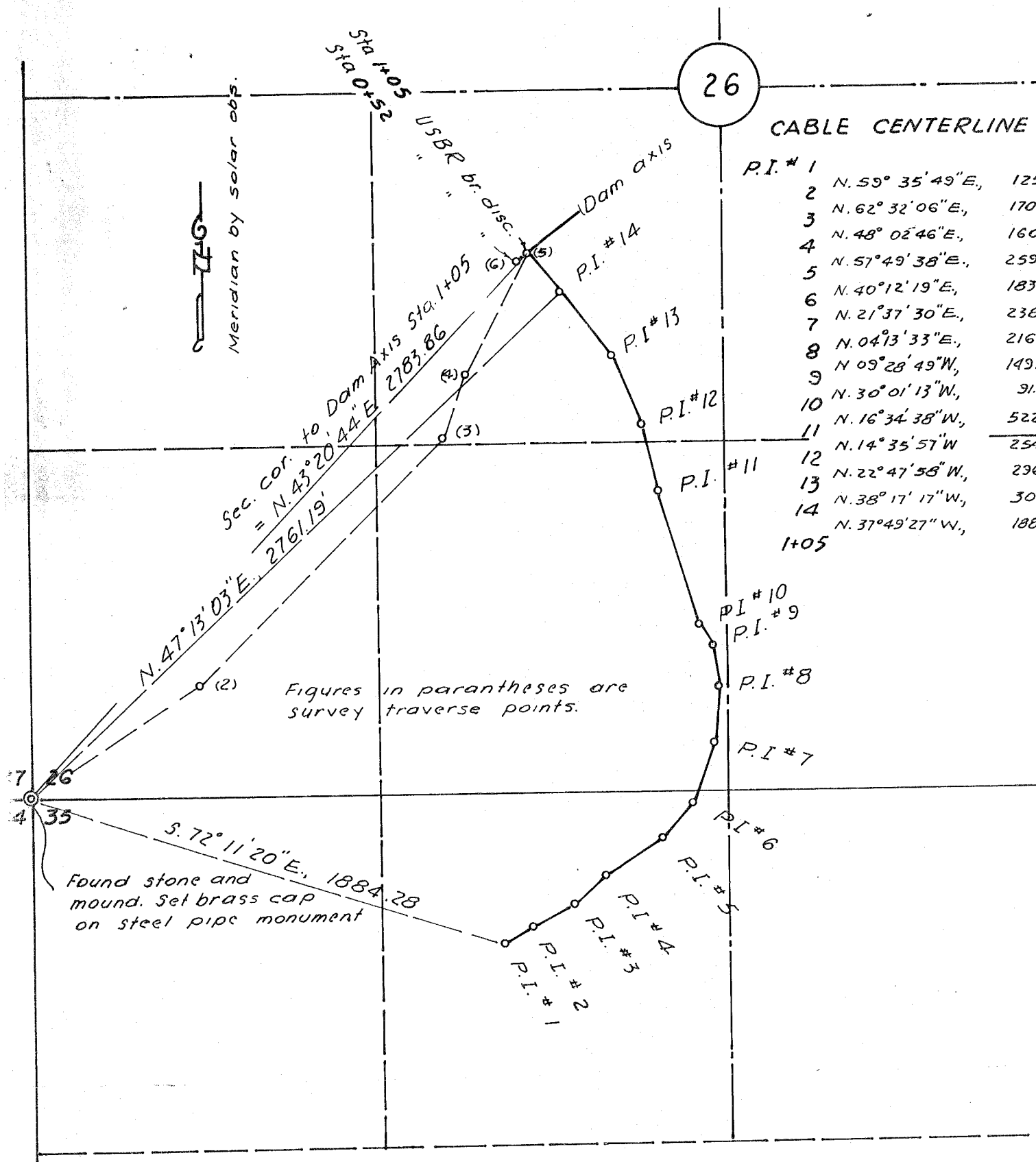


T. 6 S., R. 40 E., W.M.



### MAP OF SURVEY

THIEF VALLEY HYDROMET SYSTEM CABLE CENTERLINE  
For Bureau of Reclamation

Surveyed June 7, 1979 Scale 1" = 500'

REGISTERED  
PROFESSIONAL  
LAND SURVEYOR

James D. Hanley

OREGON  
SEPTEMBER 23, 1977  
JAMES D. HANLEY  
1206

FILED July 16, 1979  
BAKER COUNTY SURVEYOR  
SURVEY NO. 6-40-1