

N. 89°53'59"E., 2616.54' [S. 89°20'22"E., 2616.54']

(EAST, 80.00 ch.)

S. 89°04'54"E., 2662.59' [S. 88°19'15"E., 2662.59']

10 11

16 15 [1,234,943.14  
218,357.84]

[1,234,912.98  
220,914.27]

[1,234,834.96  
223,635.66]

15 14

SURVEY NARRATIVE

This survey was performed at the request of Lee Schultsmeier, land owner, for the purpose of creating and marking the exterior boundaries of two parcels from a portion of a larger parcel of land.

PROCEDURE:

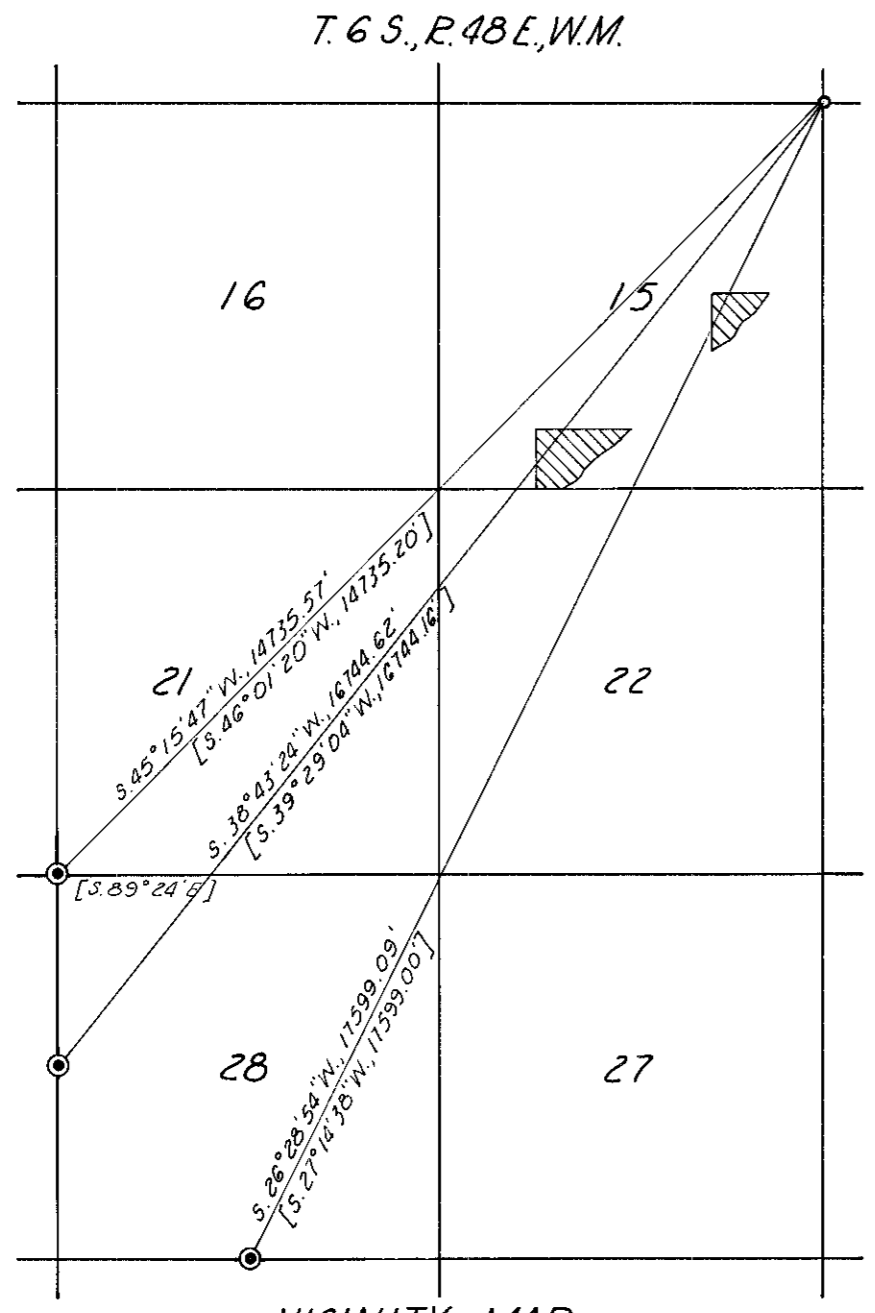
The point of beginning of this survey is the Northeast corner of Section 15, T. 6 S., R. 48 E., W.M., marked by the original corner stone established by Willard B. Blakeslee under GLO contract No. 707, dated April 24, 1899. Control from Survey No 6-48-6, filed March 27, 1978 was recovered, from which certain government corners in Section 28, said township and range, were recovered and tied by survey measurements. These corners are the South and West quarter-section corners and the Northwest section corner. A survey performed by Idaho Power Company, dated Dec. 18, 1959, and filed under Survey No. 6-48-7, records these corners and others as being found or re-established with coordinate values given for each. Correlation of common ties by Hanley Engineering and Idaho Power Co. indicates closures from 1:40,000 to 1:200,000.

SUBDIVISION OF SECTION 15:

Based upon the above stated correlation between found common corners it was determined that independent ties to those corners pertinent to the subdivision of Section 15 was not necessary. I therefore rotated the bearings of the Idaho Power Company survey to conform to the meridian established by Hanley Engineering, and using the same distances shown by Idaho Power Co., computed rotated coordinate values for the corners necessary to complete the survey. The South and East boundaries of Section 15 were meandered in the original survey of 1899 and no monumentation was recovered in the course of this survey. I therefore protracted the South and East boundaries using cardinal directions, and at their intersection calculated a theoretical value for the Southeast section corner. The related quarter corners were calculated at their resultant proportioned positions.

MONUMENTATION:

Monumentation was established as indicated on this map with those monuments along the westerly road right of way placed for reference monuments only. The exact location of the claimed roadway was not determined due to lack of roadway monumentation or record ties to relocated monuments. An unrecorded rebar monument, 3/8-inch diameter and projecting 3 inches out of the ground was recovered .21 feet North of the North line of the NE 1/4 SE 1/4 of Section 15 and near the westerly right of way line of the OSHD Hwy. No. 86.



VICINITY MAP  
1" = 2640'

N. 0°17'29"W., 2596.57' [N. 0°28'10"E., 2596.57']

(N. 0°02'E., 80.00 ch.)

N. 0°39'36"E., 2581.39' [N. 0°25'17"E., 2581.39']

16 15 [1,229,766.06  
218,272.53]

N. 0°09'40"W., 5182.36'

(S. 0°05'W., 17.00 ch.)

2569.84'

NORTH, 5139.68'

1284.92'

1284.92'

15 14  
22 23

Meridian based on Idaho Power Co. resurvey plat No. 6-48-4 of Feb. 1962, filed Jan. 10, 1972. The North line NW 1/4, Sec. 28, T. 6 S., R. 48 E., W.M., bears S. 89°24' E.

LEGEND

- FOUND MONUMENT THIS SURVEY
- ⊙ CORNER FOUND BY IDAHO POWER CO. AND REFERENCED BY COORDINATES.
- PREVIOUSLY FOUND CORNER
- SET 3/8" x 30" REBAR
- ( ) GLO RECORD
- [ ] RECORD OF IDAHO POWER CO. SURVEY DATED DEC. 18, 1959.

REFERENCE SURVEY NOS. 6-48-6, -7 & -8.

MAP OF SURVEY  
IN SECTION 15, T. 6 S., R. 48 E., W.M.  
Surveyed April 16, 1979 Scale 1" = 300'  
May 22, 1981  
For Lee Schultsmeier and  
Don Page and Robert Maynard

FILED June 3, 1981  
BAKER COUNTY SURVEYOR  
SURVEY NO. 6-48-9

REGISTERED PROFESSIONAL LAND SURVEYOR

William L. Hanley

OREGON  
JULY 24, 1931  
WILLIAM L. HANLEY  
1639

