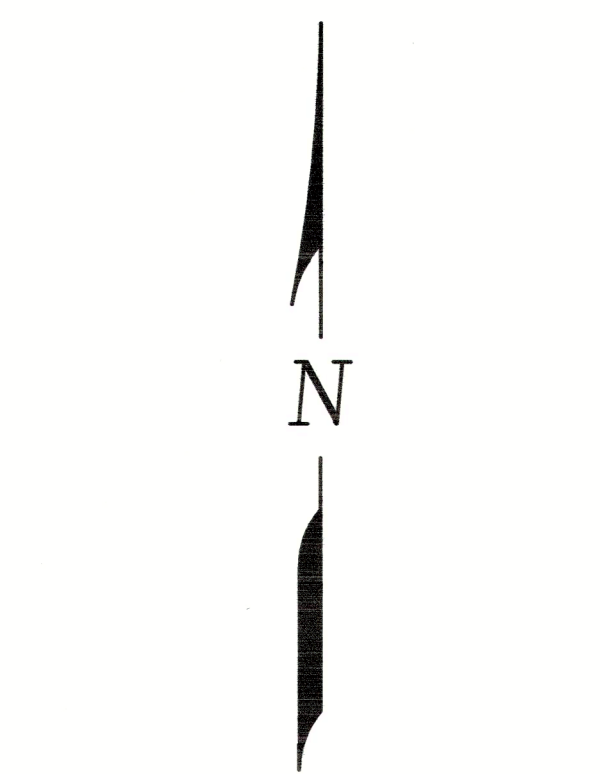
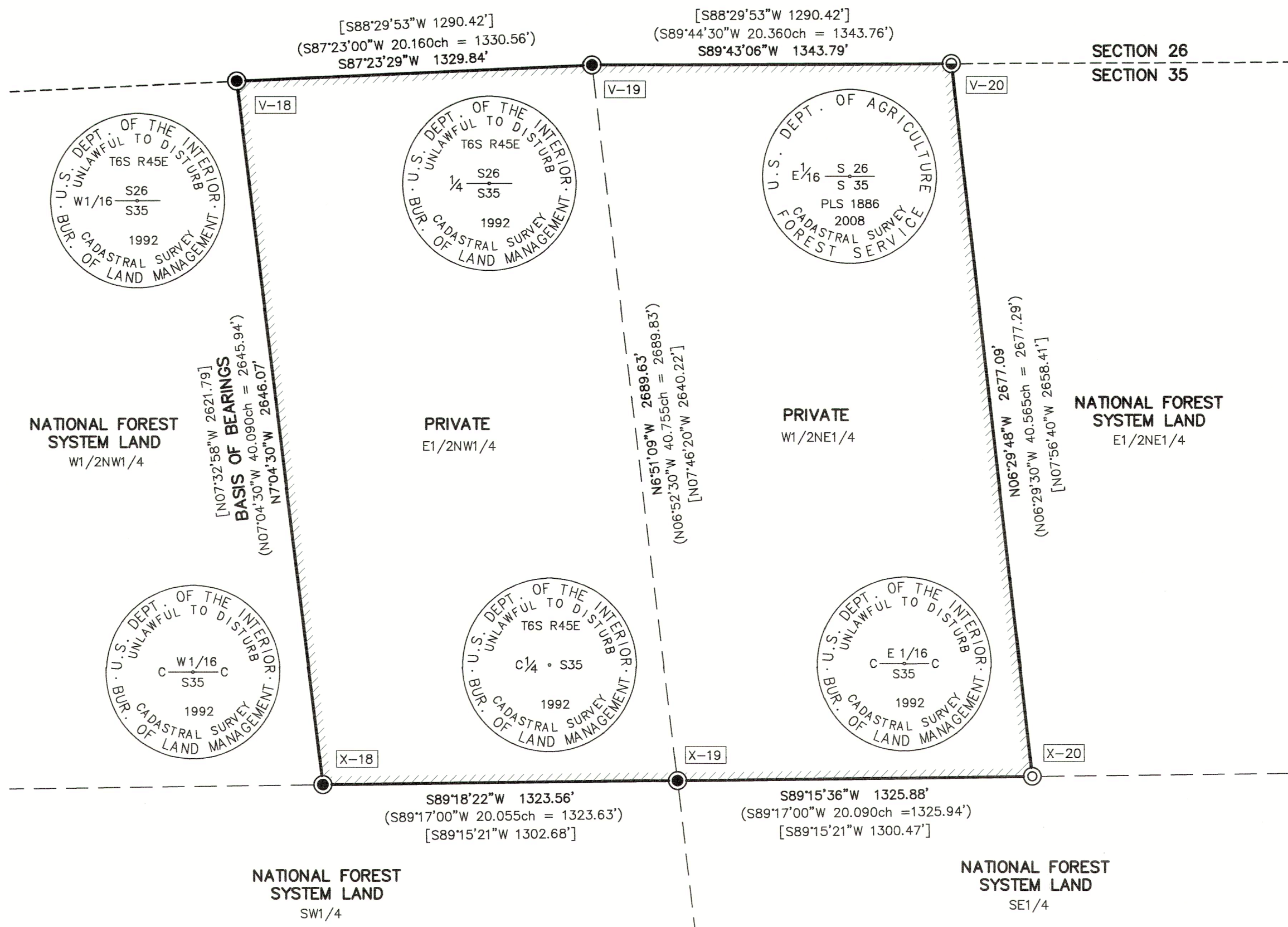


NATIONAL FOREST SYSTEM LAND



BASIS OF BEARINGS

A BEARING OF N.07°04'30"W. WAS HELD ALONG THE WEST LINE OF THE E1/2NW1/4 PER 1992 B.L.M. SURVEY UNDER GROUP NO. 1650

NARRATIVE

THIS SURVEY WAS PERFORMED FOR THE WALLOWA-WHITMAN NATIONAL FOREST, WITH THE PURPOSE OF DELINEATING THE BOUNDARIES BETWEEN PRIVATE LAND AND NATIONAL FOREST SYSTEM LAND IN SECTION 35, T.6S., R.45E., W.M. THE PRIVATE INHOLDING IS DESCRIBED IN INSTRUMENT NO. 15240039, DEED RECORDS OF BAKER COUNTY, OREGON.

A HISTORY OF SURVEYS PERTAINING TO THIS SURVEY ARE AS FOLLOWS:

1. THE SUBDIVISION OF TOWNSHIP 6 SOUTH, RANGE 45 EAST WAS PERFORMED BY WILLIAM B. BARR, U.S. DEPUTY SURVEYOR, UNDER CONTRACT NO. 503 DATED MAY 23, 1884.
2. A SURVEY FOR THE WALLOWA-WHITMAN NATIONAL FOREST PERFORMED UNDER CONTRACT IN 1982 BY DUANE I. GRIFFITH, PLS 644, FILED IN THE BAKER COUNTY SURVEYOR'S OFFICE ON SEPTEMBER 16, 1983, AS SURVEY NO.'S 6-45-30 THROUGH 6-45-33. ASSOCIATED CORNER MONUMENTATION RECORDS RELEVANT TO THIS SURVEY WERE FILED SEPARATELY AS SURVEY NO.'S 6-45-40, 6-45-41, 6-45-42, 6-45-50, 6-45-51 AND 6-45-52. AS PART OF GRIFFITH'S SURVEY, SECTION 35 WAS SUBDIVIDED, AND THE NATIONAL FOREST BOUNDARIES WERE POSTED WITH STEEL T-POSTS WITH BOUNDARY SIGNS.
3. SURVEY BY THE BUREAU OF LAND MANAGEMENT, EXECUTED BY PHILIP G. GRIFFIN, CADASTRAL SURVEYOR, COMPLETED AUGUST 30, 1994, UNDER GROUP NO. 1650, APPROVED JULY 7, 1997. GRIFFIN FOUND WHAT HE CONSIDERED ORIGINAL EVIDENCE AT THE NORTH 1/4 CORNER SECTION 35 AND THE NORTH 1/4 CORNER SECTION 36, OVERTURNING MUCH OF GRIFFITH'S 1982 SURVEY AND CHANGING THE SUBDIVISIONAL LINES OF SECTION 35. CONSEQUENTLY, THERE ARE MULTIPLE SURVEY MONUMENTS AT SEVERAL OF THE CORNER LOCATIONS.
4. CORNER PERPETUATION PROJECT PERFORMED BY RICHARD A. CHESEBRO, PLS 1886, FOR THE WALLOWA-WHITMAN NATIONAL FOREST. CORNER MONUMENTATION RECORDS FILED JANUARY 14, 2009 IN THE BAKER COUNTY SURVEYOR'S OFFICE AS SURVEY NO.'S 6-45-166, 6-45-167, AND 6-45-168.

I MADE FIELD MEASUREMENTS TO RECOVER CONTROLLING MONUMENTS FROM THE AFOREMENTIONED SURVEYS. AT THE CENTER-EAST 1/16 CORNER OF SECTION 35, WE FOUND THE B.L.M. MONUMENT LOOSELY SET AND PROJECTING 20" ABOVE GROUND. THROUGH SUBSEQUENT MEASUREMENTS, I DETERMINED THE B.L.M. MONUMENT AND MAGNET HAD BEEN MOVED S.21°24'E., 19.4 FT FROM ITS ORIGINAL LOCATION BY PERSONS UNKNOWN. WE FOUND THE SPRUCE BEARING TREE RECORDED BY B.L.M. STILL ALIVE AND IN GOOD CONDITION, BUT FOUND NO REMAINING EVIDENCE OF THE LODGEPOLE BEARING TREE MARKED BY B.L.M. WE ALSO FOUND GRIFFITH'S ALUMINUM CAPPED MONUMENT IN GOOD CONDITION. I REESTABLISHED THE CORNER USING DISTANCE-DISTANCE INTERSECT METHOD, MEASURING B.L.M. RECORD DISTANCES FROM THE FOUND SPRUCE BEARING TREE AND FROM THE FOUND GRIFFITH MONUMENT. I RESET THE B.L.M. MONUMENT AT THE CORNER POINT.

I ACCEPT ALL OF THE OTHER FOUND B.L.M. MONUMENTS AT THE APPURTENANT CORNERS, AS SHOWN HEREON. AT ALL SIX CORNERS, I ALSO FOUND THE ALUMINUM MONUMENTS FROM BAKER COUNTY SURVEY NO. 6-45-31, WHICH I DO NOT ACCEPT ON THE BASIS OF ORS 209.200(1).

THE NATIONAL FOREST BOUNDARY WAS POSTED WITH ALUMINUM POSTS AND BOUNDARY SIGNS. SEE CORNER MONUMENTATION RECORDS FILED SEPARATELY FOR MORE DETAILS REGARDING MONUMENTS FOUND AND SET AND CORNER PERPETUATION ACTIVITIES PERFORMED.

CORNER NOTES

- V-18 FROM THE FOUND ACCEPTED B.L.M. MONUMENT, I ALSO FOUND A 2 1/2" ALUMINUM PIPE WITH ATTACHED 2 1/2" ALUMINUM CAP FROM SURVEY NO. 6-45-31, WHICH BEARS S.55°25'W., 47.72 FT. (B.L.M. RECORD: S.55°17'00"W., 47.65 FT.), AND IS NOT ACCEPTED.
- V-19 FROM THE FOUND ACCEPTED B.L.M. MONUMENT, I ALSO FOUND A 2 1/2" ALUMINUM PIPE WITH ATTACHED 2 1/2" ALUMINUM CAP FROM SURVEY NO. 6-45-31, WHICH IS NOT ACCEPTED. NOT TIED THIS SURVEY. B.L.M. RECORD TIE: S.55°01'05"W., 94.91 FT.
- V-20 FROM THE FOUND ACCEPTED U.S.F.S. MONUMENT, I ALSO FOUND A 2 1/2" ALUMINUM PIPE WITH ATTACHED 2 1/2" ALUMINUM CAP FROM SURVEY NO. 6-45-31, WHICH IS NOT ACCEPTED. NOT TIED THIS SURVEY. B.L.M. RECORD TIE: S.78°39'30"W., 134.18 FT.
- X-18 FROM THE FOUND ACCEPTED B.L.M. MONUMENT, I ALSO FOUND A 2 1/2" ALUMINUM PIPE WITH ATTACHED 2 1/2" ALUMINUM CAP FROM SURVEY NO. 6-45-31, WHICH BEARS N.89°59'W., 21.75 FT. (B.L.M. RECORD: N.89°48'00"W., 21.65 FT.), AND IS NOT ACCEPTED.
- X-19 FROM THE FOUND ACCEPTED B.L.M. MONUMENT, I ALSO FOUND A 2 1/2" ALUMINUM PIPE WITH ATTACHED 2 1/2" ALUMINUM CAP FROM SURVEY NO. 6-45-31, WHICH BEARS N.88°55'W., 41.92 FT. (B.L.M. RECORD: N.89°32'30"W., 41.84 FT.), AND IS NOT ACCEPTED.
- X-20 FROM THE B.L.M. MONUMENT RESET DURING THIS SURVEY, THE 2 1/2" ALUMINUM PIPE WITH ATTACHED 2 1/2" ALUMINUM CAP FROM SURVEY NO. 6-45-31 BEARS N.89°27'19"W., 67.32 FT. (B.L.M. RECORD: N.89°22'00"W., 67.32 FT.). SAID ALUMINUM MONUMENT WAS NOT ACCEPTED FOR THE CORNER BUT WAS UTILIZED AS AN ACCESSORY TO REESTABLISH THE CORNER. SEE NARRATIVE FOR MORE DETAILS.

REFERENCES

RECORD MAP OF SURVEY NO.'S 6-45-30 THROUGH 6-45-33, 6-45-40, 6-45-41, 6-45-42, 6-45-50, 6-45-51, 6-45-52, 6-45-166, 6-45-167 AND 6-45-168
 DEED RECORD INSTRUMENT NO. 15240039
 B.L.M. FIELD NOTES

REGISTERED PROFESSIONAL LAND SURVEYOR

 OREGON
 NOVEMBER 30, 2007
 JASON L. HATFIELD
 #69454
 EXPIRES: 6/30/2023

I HEREBY CERTIFY THAT THIS SURVEY WAS PERFORMED AT THE REQUEST OF THE WALLOWA-WHITMAN NATIONAL FOREST

 FOREST SUPERVISOR
 DATE 12/12/2022

LEGEND

- FOUND 2 1/2" STAINLESS STEEL PIPE WITH ATTACHED 3/4" B.L.M. BRASS CAP FROM 1992 SURVEY UNDER GROUP NO. 1650
- ⊙ FOUND 2 1/2" ALUMINUM PIPE WITH ATTACHED 3/4" U.S.F.S. ALUMINUM CAP FROM BAKER COUNTY SURVEY NO. 6-45-168
- ⊙ FOUND 2 1/2" STAINLESS STEEL PIPE WITH ATTACHED 3/4" B.L.M. BRASS CAP FROM 1992 SURVEY UNDER GROUP NO. 1650. MONUMENT WAS FOUND DISPLACED AND WAS RESET THIS SURVEY - SEE NARRATIVE
- () RECORD BEARING AND DISTANCE FROM 1992 B.L.M. SURVEY UNDER GROUP NO. 1650
- [] RECORD BEARING AND DISTANCE FROM BAKER COUNTY SURVEY NO. 6-45-31
- ▬ NATIONAL FOREST BOUNDARY POSTED THIS SURVEY
- V-18 PLSS CORNER INDEX DESIGNATION

FILED December 14, 2022
 BAKER COUNTY SURVEYOR
 SURVEY NO. 6-45-173



UNITED STATES DEPARTMENT OF AGRICULTURE FOREST SERVICE REGION 6 - NORTHEAST OREGON LAND ZONE 1550 DEWEY AVENUE, SUITE A - BAKER CITY, OREGON 97814 - (541) 523-1283		
MAP OF SURVEY E1/2NW1/4 AND THE W1/2NE1/4 SECTION 35, T.6S., R.45E., W.M., BAKER COUNTY, OREGON		
SURVEYED FOR	WALLOWA-WHITMAN NATIONAL FOREST	
SURVEYED BY	JLH, DBL & DHC	SURVEYED: 9/22/2022
SCALE: 1" = 400'	DRAWN BY: JLH	