

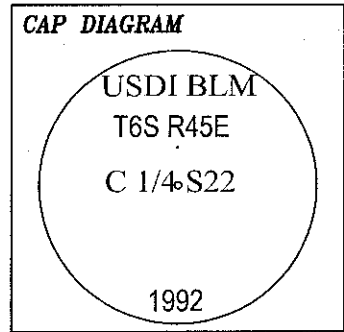
CHESEBRO & KALB

Land Surveying & Boundary Consulting

32610 Mountain Lakes Drive
Klamath Falls, OR 97601
(541) 356-2381

CERTIFIED RECORD OF LAND CORNER MONUMENTATION

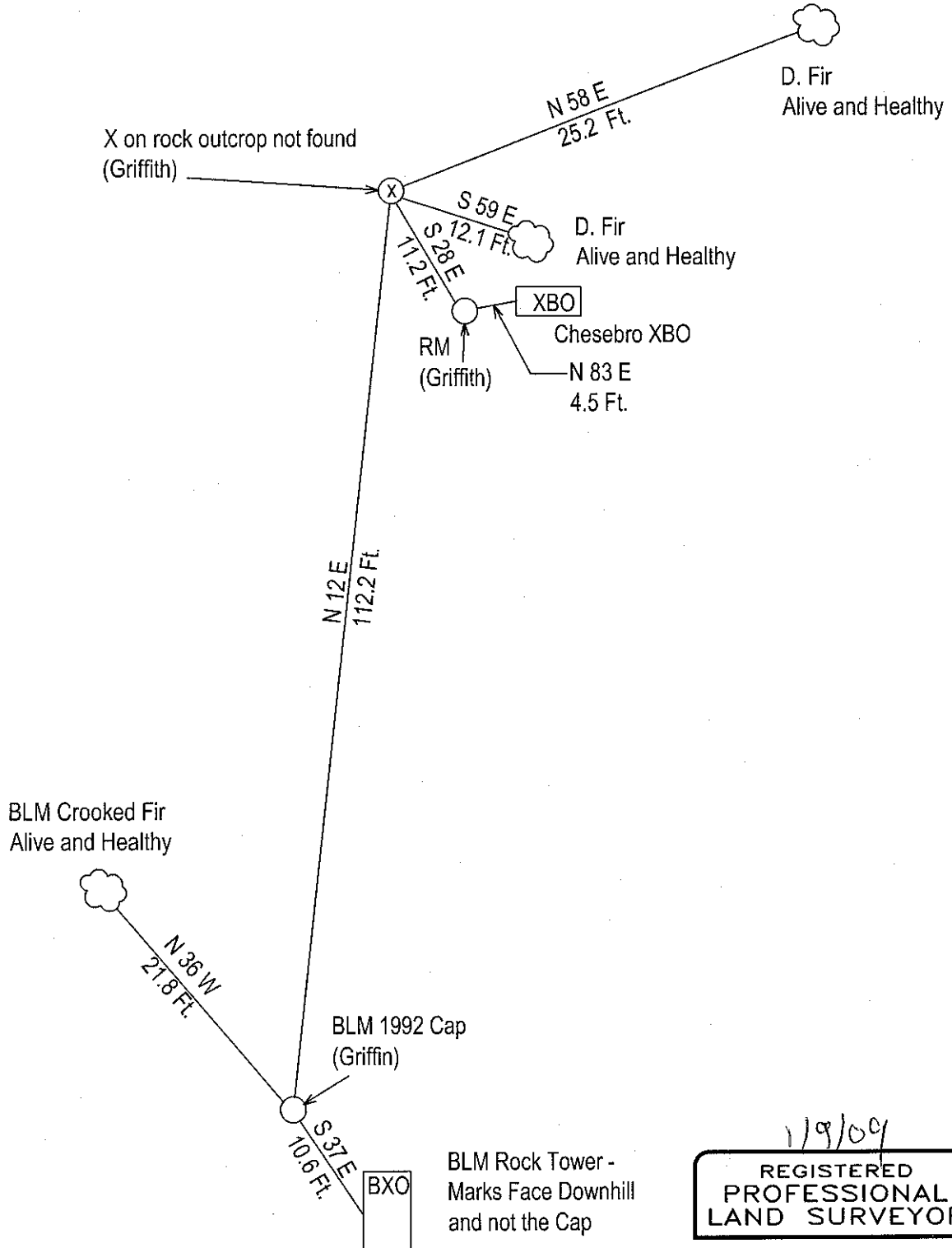
P-15



45° 01' 45.820" N
117° 11' 44.983" W
+/- 5 Meters.
NAD 83

Sketch of monuments and accessories:

Drawing not to scale



Office of.....County.....Surveyor..... County of.....Baker.....
 State of.....Oregon....., I hereby certify that the within was filed
 in this office for record on the..... day of....., 20.....
 by (DEPUTY)
 (COUNTY OFFICIAL)

1/9/09
REGISTERED PROFESSIONAL LAND SURVEYOR

Richard Chesebro
OREGON
 JULY 18, 1980
 Richard A. Chesebro
 1886
 Renews: 12-31-2009

FILED JAN. 14, 2009
 BAKER COUNTY SURVEYOR
 SURVEY NO. 6-45-159