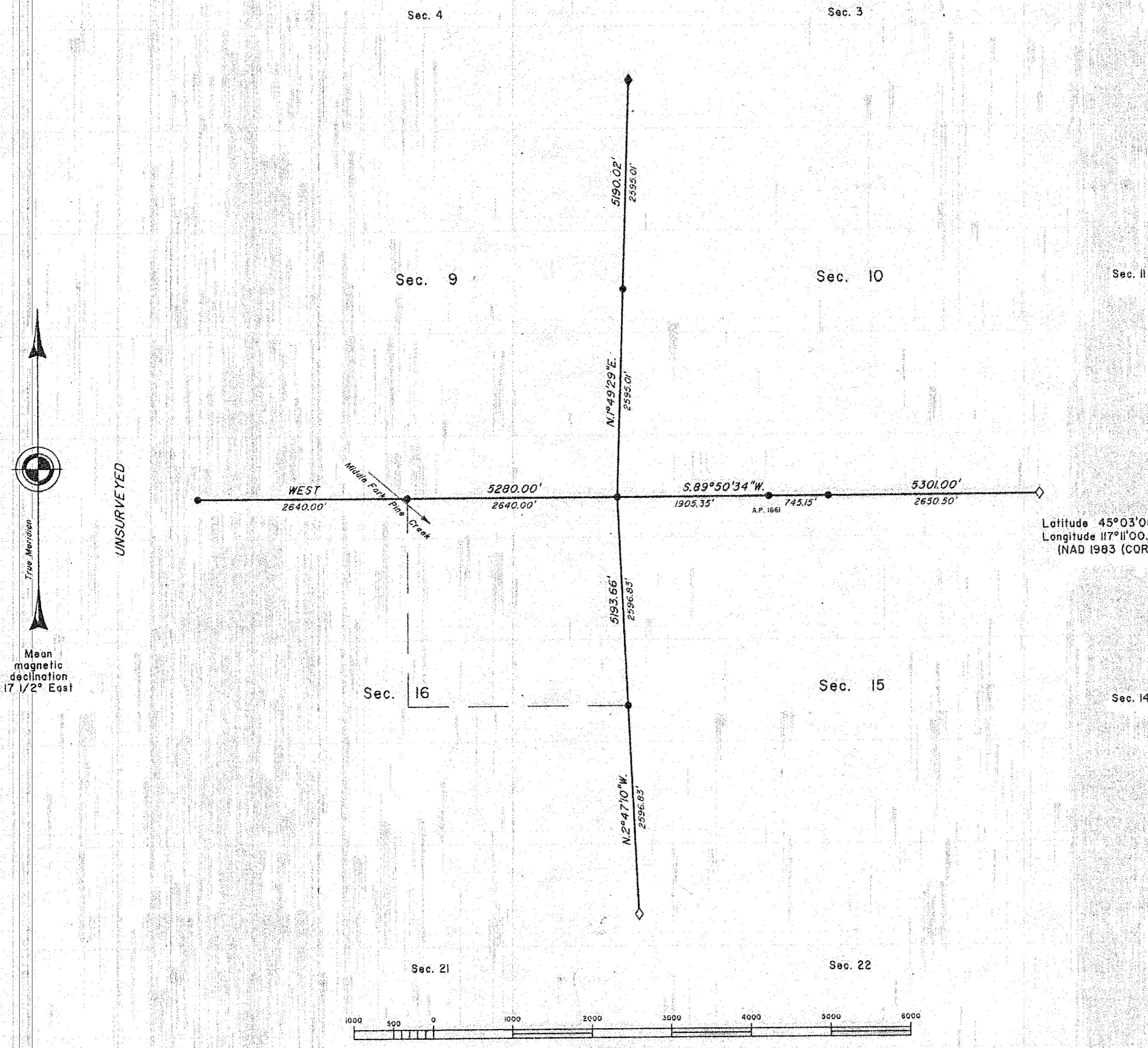


TOWNSHIP 6 SOUTH, RANGE 45 EAST, OF THE WILLAMETTE MERIDIAN, OREGON

DEPENDENT RESURVEY



A history of surveys is contained in the field notes.

This plat represents a dependent resurvey of a portion of the subdivisional lines, T. 6 S., R. 45 E., Willamette Meridian, Oregon, designed to restore the corners in their true original locations according to the best available evidence.

Measured distances and directions have been adjusted by Trimble Geomatics Office (TGO), computer software that incorporates a least squares adjustment routine. The adjusted bearings and distances are reported to the nearest second and 0.01 foot.

The lottings and areas are as shown on the plat approved March 21, 1885.

The survey was executed by Richard S. Kaiser, Cadastral Surveyor, beginning July 13, 2004, and completed July 28, 2004, pursuant to Special Instructions dated April 28, 2004, under Group Number 2085, Oregon.

Timber in this area consists of fir, spruce and pine.

Latitude 45°03'05.86"N.
Longitude 117°11'00.875"W.
(NAD 1983 (CORS 96))

LEGEND

- ◇ Original corner previously remonumented
- ◆ Original corner remonumented this survey
- Corner established or reestablished this survey

UNITED STATES DEPARTMENT OF THE INTERIOR
BUREAU OF LAND MANAGEMENT

Portland, Oregon December 6, 2005

This plat is strictly conformable to the approved field notes, and the survey, having been correctly executed in accordance with the requirements of law and the regulations of this Bureau, is hereby accepted.

For the Director

Mary J. M. Hunt

Chief Cadastral Surveyor of Oregon

FILED MARCH 24, 2006
BAKER COUNTY SURVEYOR
SURVEY NO. 6-45-147