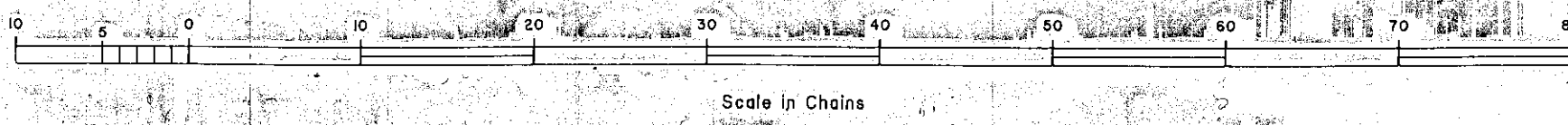
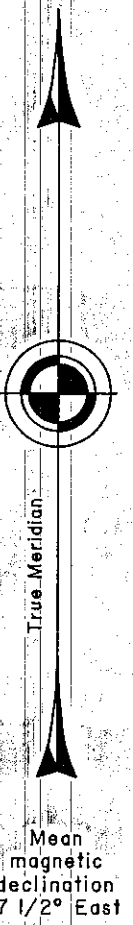
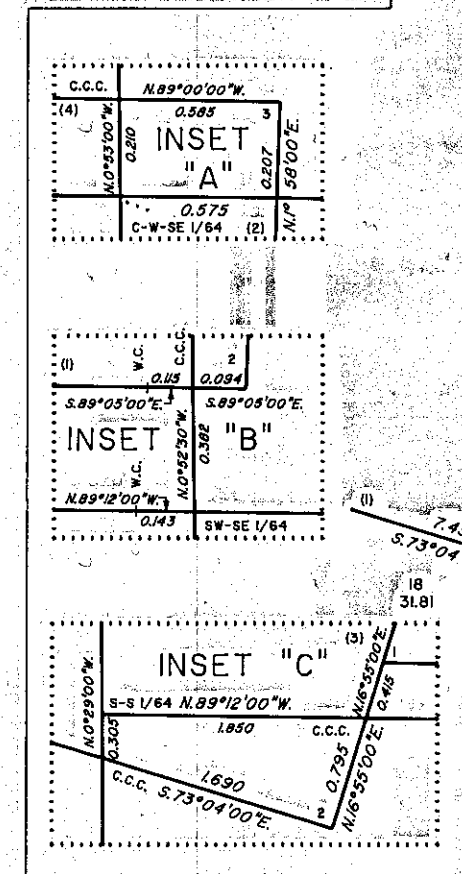
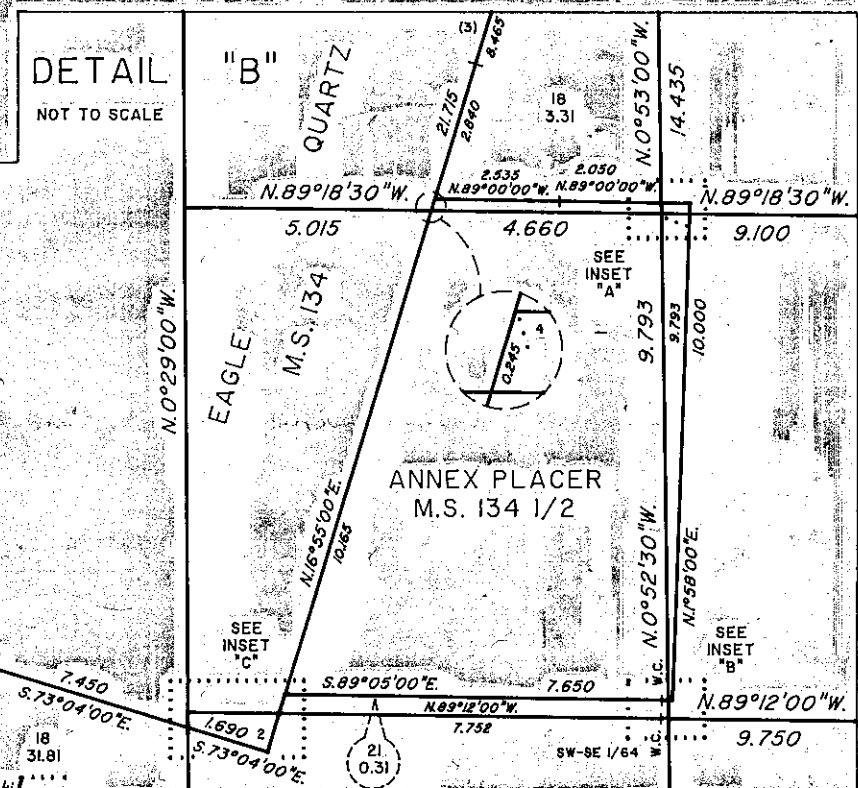
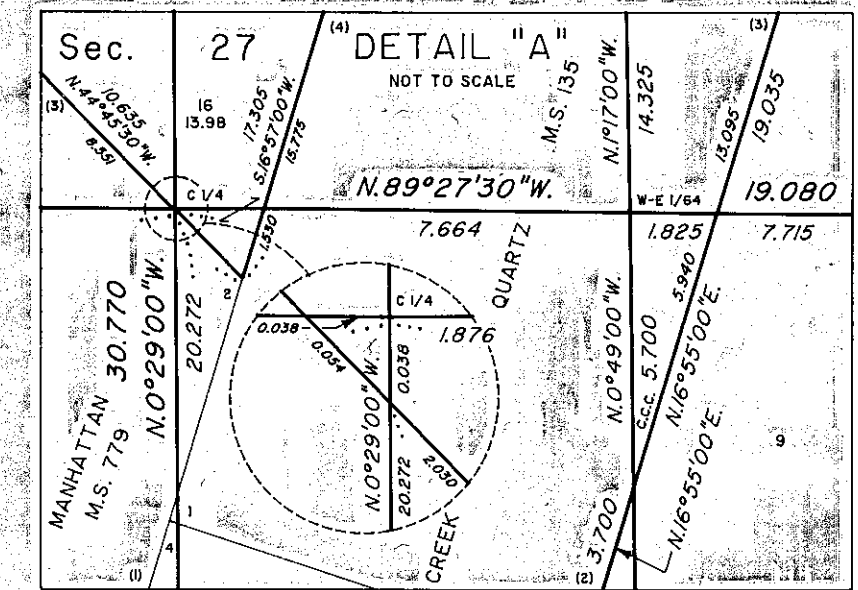
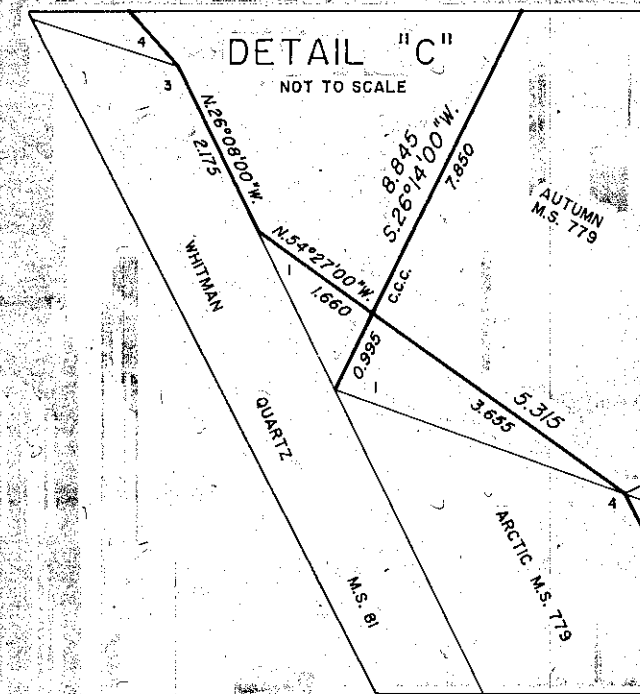
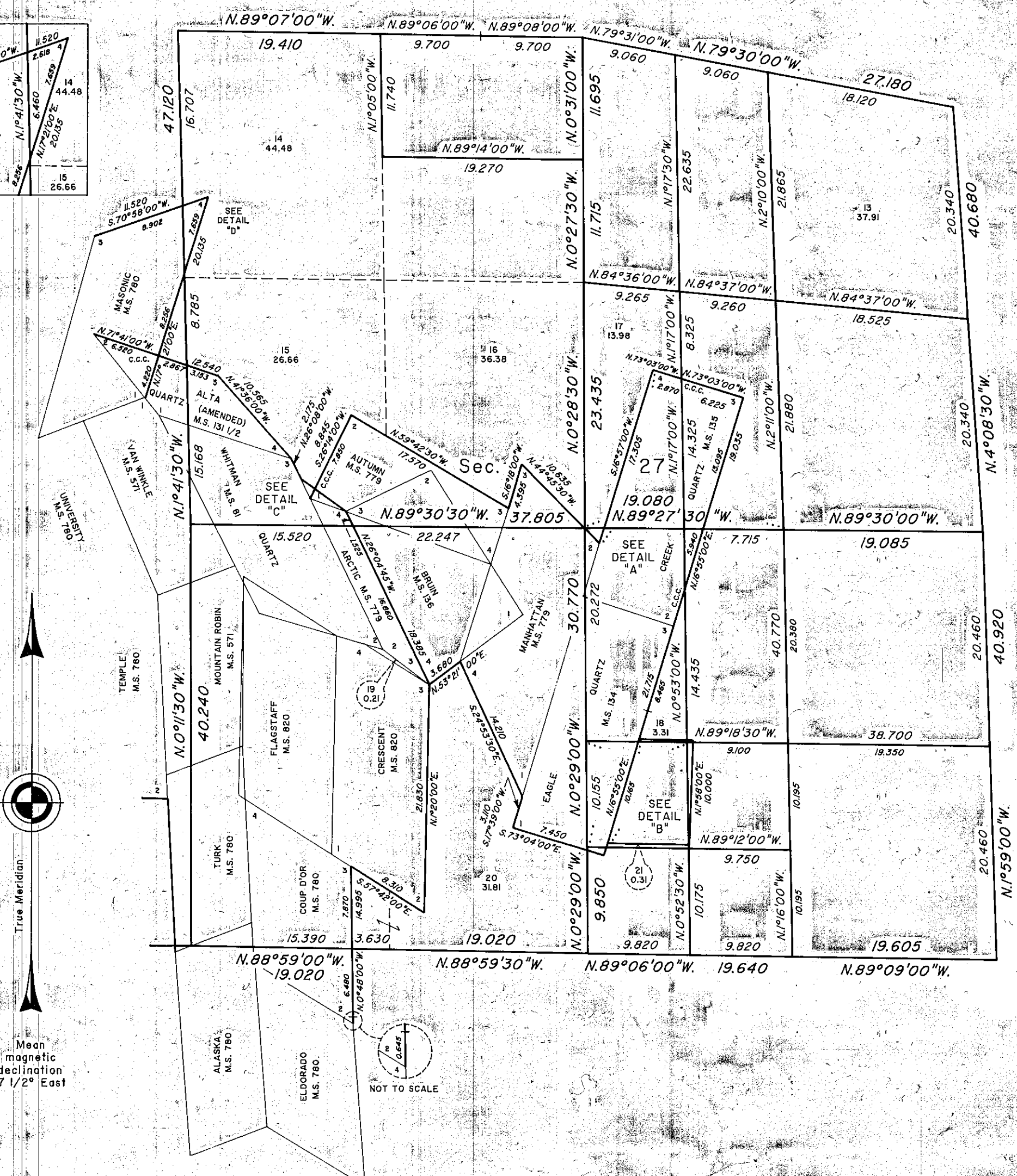
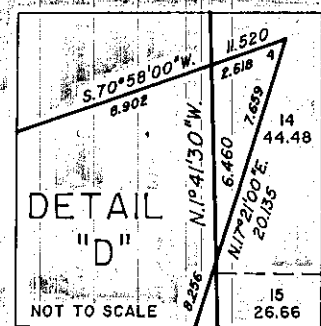


# TOWNSHIP 6 SOUTH, RANGE 45 EAST, OF THE WILLAMETTE MERIDIAN, OREGON

SHEET 2 OF 3

## DEPENDENT RESURVEY AND SUBDIVISION OF SECTIONS



UNITED STATES DEPARTMENT OF THE INTERIOR  
BUREAU OF LAND MANAGEMENT

Portland, Oregon July 7, 1997

This plat is strictly conformable to the approved field notes, and the survey, having been correctly executed in accordance with the requirements of law and the regulations of this Bureau, is hereby accepted.

For the Director

*Wayne D. Gardner*  
Chief Cadastral Surveyor of Oregon

FILED FEB 11, 1998  
BAKER COUNTY SURVEYOR  
SURVEY NO. 6-45-144

R. F. D.