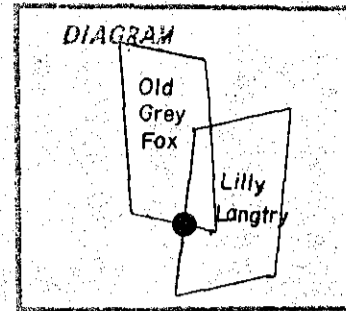


CERTIFIED RECORD OF LAND CORNER MONUMENTATION

History of original corner establishment:

This corner position is called on the mineral surveys of Old Grey Fox and Lilly Langtry (Mineral surveys 765 and 799) However, no record was found of setting a monument or taking bearing trees



Description of corner evidence found:

Found a 6 inch x 6 inch rotted post in slight mound of stone. Can read "LILLY" on one side and "779" on other side

A 15 inch diameter red fir bears N58°E, 8.6 feet. I opened and found "OGF 558". There are more scribes above and below which I am unable to read

Description of monument and accessories I established to perpetuate the original location of this corner:

In place of post, I set a 2 1/2"x30" iron pipe with brass cap marked as shown, 20 inches in the ground, from which:

NEW BTs

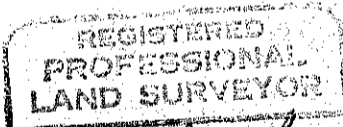
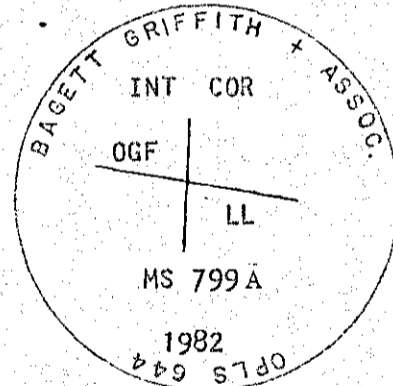
- A 23 in dia red fir bears S58°W, 22.9 feet marked X BT
A 14 in dia red fir bears N38°W, 21.0 feet marked COR INT LL 799A BT

Raised mound of stone around monument

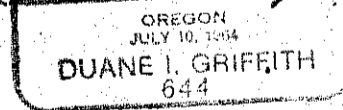
Set steel fence post approximately 5 feet Northwesterly with 54-4 and 54-2 signs and approximately 5 feet Southerly with 54-2 sign attached

Corner set September 12, 1982

Witnesses: Greg Blackman, Rick Robinson and Ray Crapo



Handwritten signature of Duane I. Griffith



I hereby certify this corner was re-established as hereon described on the date written above

I used a steel tape and magnetic compass in the establishment of accessories. I used 20° East magnetic declination, and distances to the new BTs are to the center of the tree. I placed a brass washer marked OPLS 644 by the BT blaze of new BTs.

Office of..... County of.....
State of....., I hereby certify that the within instrument was filed in this office for record on the..... day of....., 19.....
..... by
(COUNTY OFFICIAL) (DEPUTY)

Form R6-7100-57 (9/71)

FILED Sept 16 1983
BAKER COUNTY SURVEYOR
SURVEY NO. 6-45-94

6-370-123-27

Handwritten number 85 with a checkmark