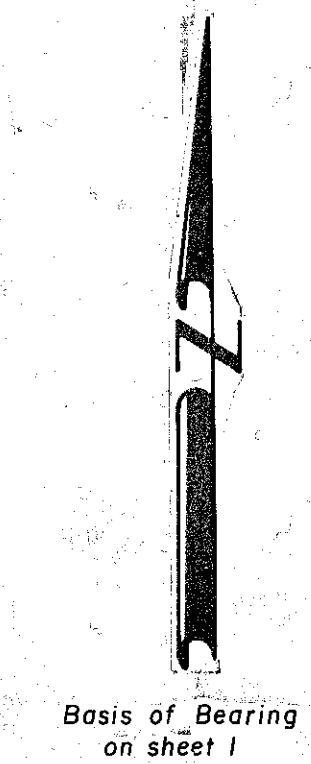


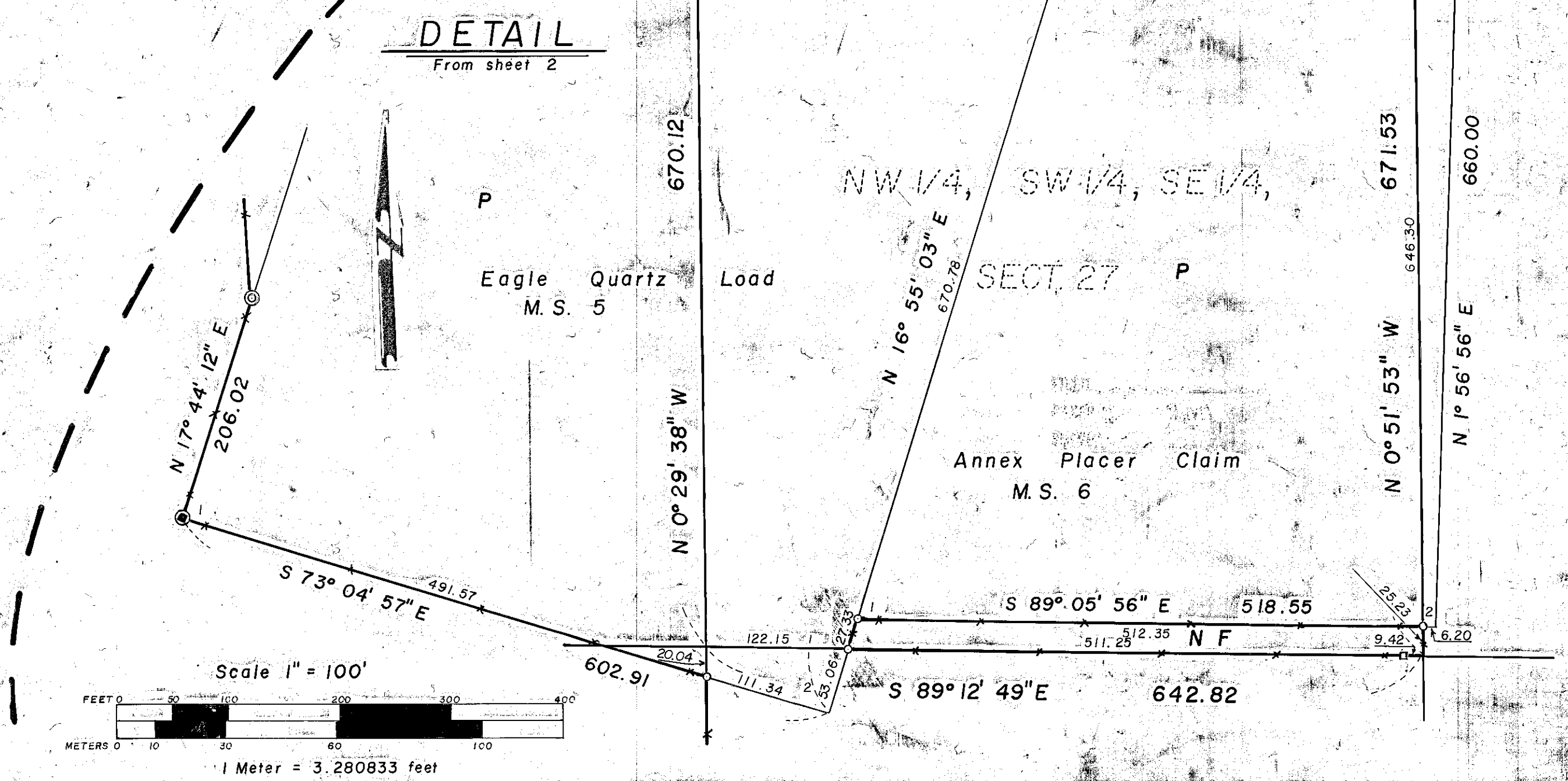
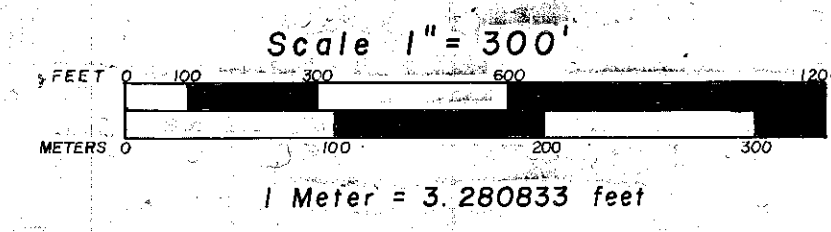
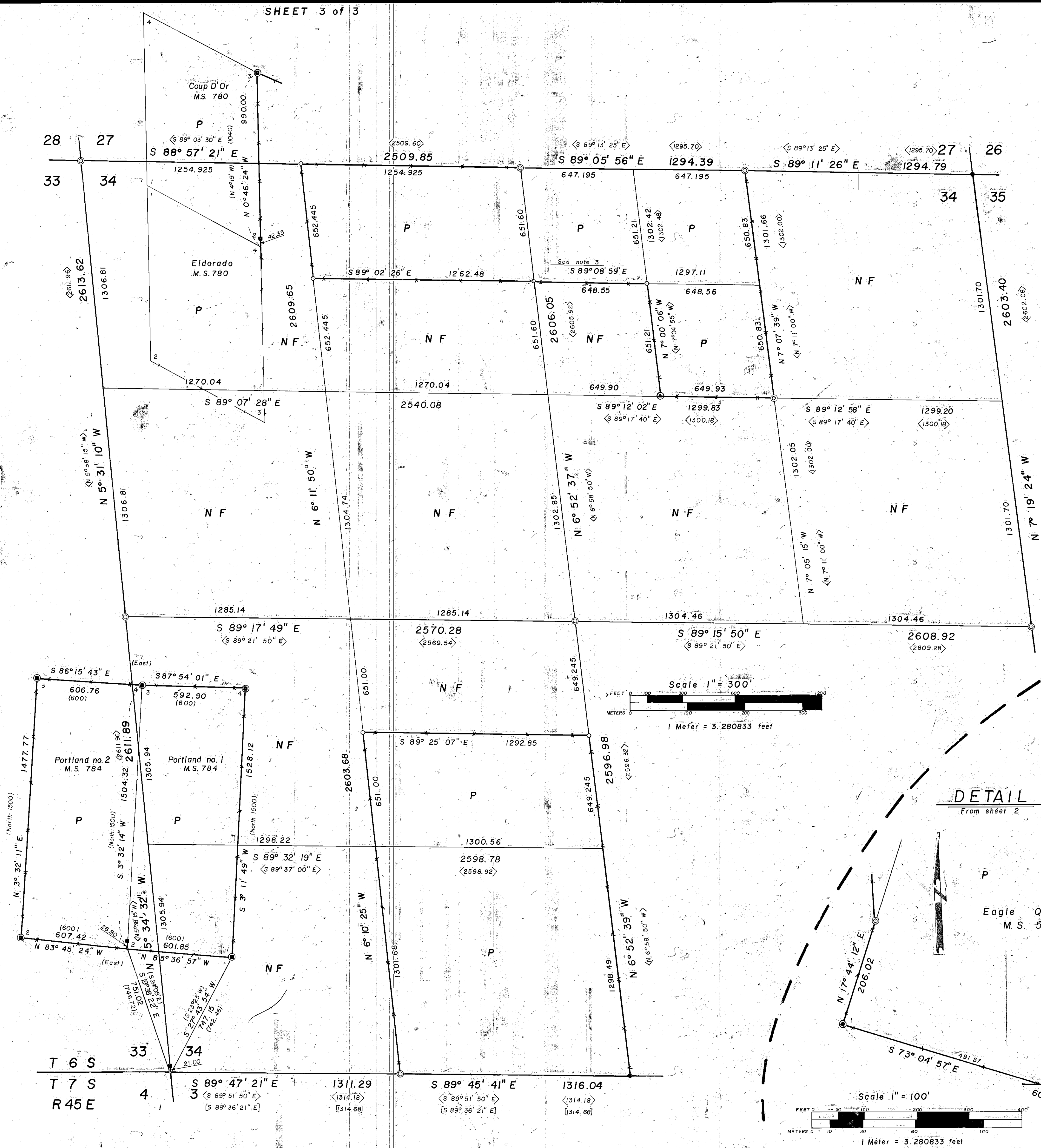
LEGEND

- Found evidence of original G.L.O. corner set 2-1/2" x 30" monument
- Found B.L.M. monument, as recorded
- ⊙ Found monument, set by others, as recorded
- ⊕ Found monument, set by others, as recorded; replaced with 2-1/2" x 30" monument
- Found evidence of original mineral survey, set 2-1/2" x 30" monument
- Set witness monument on basis of found evidence of original corner
- Set 2-1/2" x 30" monument at proportionate distance
- Set witness monument on basis of proportionate distance
- ( ) Record bearing & distance (G.L.O. & M.S.)
- < > Record bearing & distance (survey no. 6-45-13)
- [ ] Record bearing & distance (survey no. 7-45-5)
- Posted line
- N F National Forest Land
- P Privately Owned Land



NOTES

1. For description of corner monuments, see remonumentation forms filed separately
2. Written narrative of survey filed separately
3. The south line of the NW 1/4 of the NW 1/4 of the NE 1/4 as shown is posted on record title line only, see narrative



REGISTERED PROFESSIONAL LAND SURVEYOR  
 Duane I. Griffith  
 OREGON  
 JAN 10 1984  
 DUANE I. GRIFFITH  
 644

FILED Sept. 17, 1983  
 BAKER COUNTY SURVEYOR  
 SURVEY NO. 6-45-33

SHEET 3 of 3

**BAGETT - GRIFFITH & ASSOCIATES**  
 La Grande, Oregon  
 Map of Survey

Sections 34 & 27  
 T 6 S, R 45 E, W.M.  
 BAKER COUNTY, OREGON

SURVEYED FOR Wallowa-Whitman National Forest  
 SURVEYED BY d.i.g. - g.t.b. - r.g.r. 1982  
 Scale: as noted Drawn by: d.i.g. 12/1982