



Senator Tabor  
Mill Site M.S. 370 B

**BASIS OF BEARING**

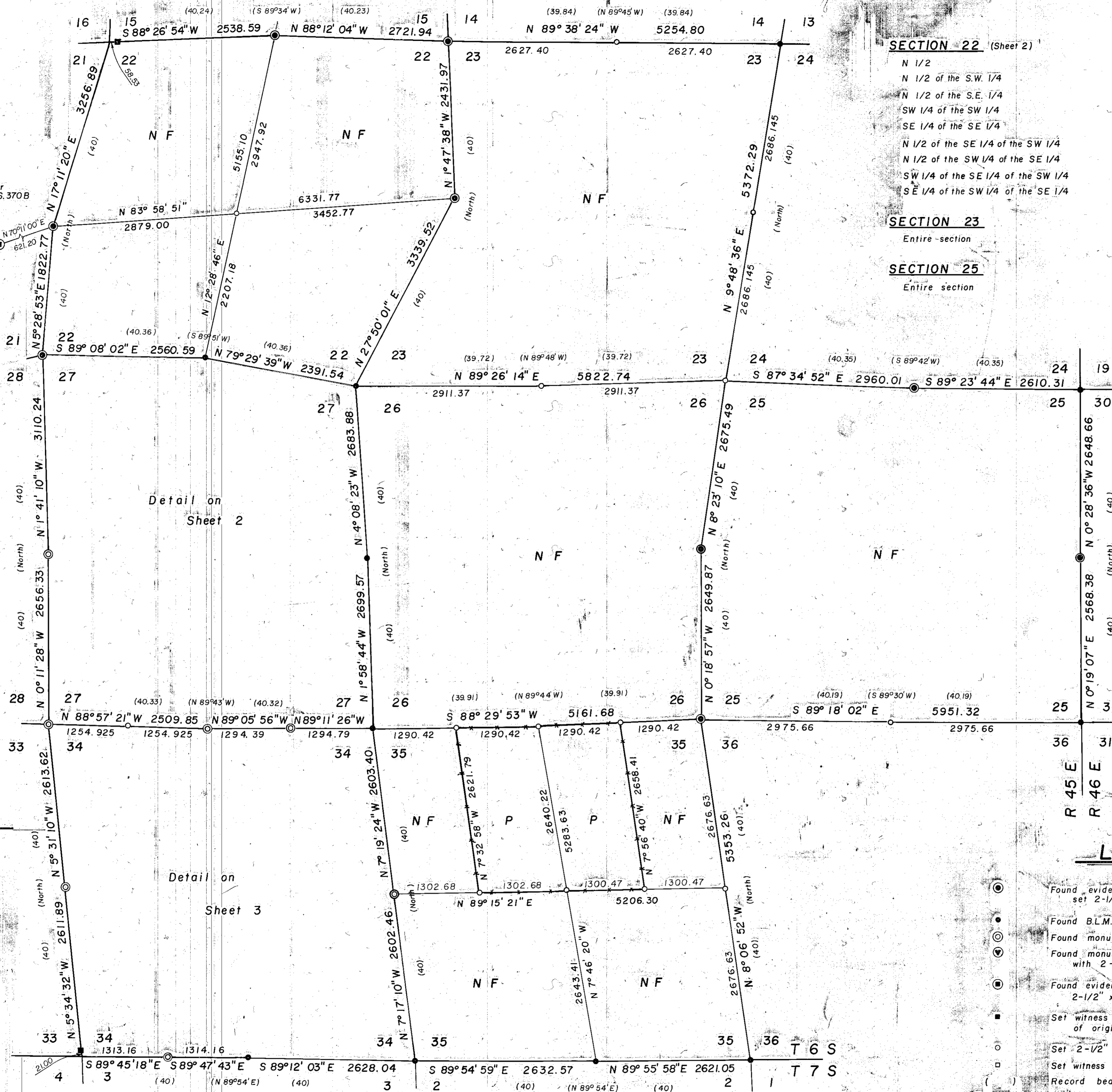
A.M. Solar observations taken at a point  
900 ft. north and 500 ft. west of the  
w 1/4 corner of section 27, T 6 S, R 45 E.

Mean vertical angle	2° 32' 06"
Mean horizontal angle	234° 33' 40"
Mean declination	17° 44' 50"
Latitude	45° 01' 05"
Magnetic declination	20° East
Date	Aug. 2, 1982

**SURVEYORS STATEMENT**

I, Duane I. Griffith, Registered Land Surveyor in the State of Oregon, hereby certify that this plat and the notes hereon, or attached are a true and correct representation of the survey I made during the summer and fall of 1982, for the U.S. Forest Service in accordance with the statutes of the State of Oregon and with the articles of my contract.  
The narrative description of this survey is filed separately.

REGISTERED  
PROFESSIONAL  
LAND SURVEYOR  
*Duane I. Griffith*  
OREGON  
PLAT NO. 1982-158  
DUANE I. GRIFFITH  
644



**NATIONAL FOREST LANDS**

**SECTION 22** (Sheet 2)  
N 1/2  
N 1/2 of the S.W. 1/4  
N 1/2 of the S.E. 1/4  
SW 1/4 of the SW 1/4  
SE 1/4 of the SE 1/4  
N 1/2 of the SE 1/4 of the SW 1/4  
N 1/2 of the SW 1/4 of the SE 1/4  
SW 1/4 of the SE 1/4 of the SW 1/4  
SE 1/4 of the SW 1/4 of the SE 1/4

**SECTION 23**  
Entire section

**SECTION 25**  
Entire section

**SECTION 26**  
Entire section

**SECTION 27** (Sheet 2)  
NE 1/4 of the NE 1/4  
E 1/2 of the NW 1/4 of the NE 1/4  
S 1/2 of the NE 1/4 of the NW 1/4  
NW 1/4 of the NW 1/4  
SE 1/4 of the NE 1/4  
Parcel in the W 1/2 of the SW 1/4 of the NE 1/4 as shown on annexed plat.  
Parcel in the SE 1/4 of the NW 1/4  
NE 1/4 of the SE 1/4  
Parcels in the NW 1/4 of the SE 1/4 as shown on annexed plat.  
SE 1/4 of the SE 1/4  
Parcel in the SW 1/4 of the SE 1/4 as shown on annexed plat.  
Parcels in the SW 1/4

**SECTION 35**  
S 1/2  
E 1/2 of the NE 1/4  
W 1/2 of the NW 1/4

**SECTION 34** (Sheet 3)  
S 1/2 of the NE 1/4  
NE 1/4 of the NE 1/4  
SW 1/4 of the NW 1/4 of the NE 1/4  
SE 1/4 of the NW 1/4  
S 1/2 of the NE 1/4 of the NW 1/4  
Parcel in the NW 1/4 of the NW 1/4  
SE 1/4  
N 1/2 of the NE 1/4 of the SW 1/4  
Parcel in the NW 1/4 of the SW 1/4 as shown on annexed plat  
Parcel in the SW 1/4 of the SW 1/4 as shown on annexed plat.  
Parcel in the SW 1/4 of the NW 1/4

**REFERENCE MATERIAL**

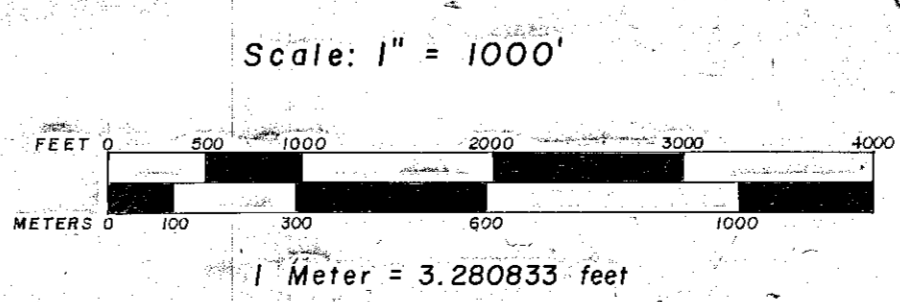
General Land Office notes of original survey			Remuneration by the B.L.M.
U.S. Mineral Surveys			Group 350, dated Aug. 22, 1974
LaGrande land district, survey no.			
3	206	765	784
4	322	771	799
5	323	779	820
6	370	760	
Map of survey no.			
6-45-4, 6-45-13, 7-45-5			
Remuneration records by others			Forest Service corner search records
No. 6-45-6 thro. 6-45-12			
No. 6-45-14 thro. 6-45-23			

**NOTES**

- For description of corner monuments, see remuneration forms filed separately.
- Written narrative of survey filed separately.

**LEGEND**

- Found evidence of original G.L.O. corner set 2-1/2 x 30" monument
- Found B.L.M. monument as recorded
- ⊙ Found monument set by others as recorded
- ⊖ Found monument set by others as recorded, replaced with 2-1/2 x 30" monument
- ⊕ Found evidence of original mineral survey, set 2-1/2 x 30" monument
- Set witness monument on basis of found evidence of original corner
- Set 2-1/2 x 30" monument at proportionate distance
- Set witness monument on basis of proportionate distance
- Record bearing & distance
- - - Posted line
- N F National Forest Land
- P Privately Owned Land



BAGETT - GRIFFITH & ASSOCIATES  
LaGrande, Oregon  
Map of Survey  
In the S.E. 1/4 of  
**T 6 S, R 45 E, W.M.**  
BAKER COUNTY, OREGON  
SURVEYED FOR Wallowa-Whitman National Forest  
SURVEYED BY d.i.g. - g.t.b. - r.g.r. 1982  
Scale: 1" = 1000' Drawn by: d.i.g. 12/1982