

Preliminary Copy ONLY. Subject to Revisions NATIONAL FOREST LANDS

6-45-27



Senator Taber Mill Site M.S. 370B

BASIS OF BEARING

A.M. Solar observations taken at a point 900 ft. north and 500 ft. west of the w 1/4 corner of section 27, T 6 S, R 45 E.

Table with 2 columns: Measurement type (Mean vertical angle, Mean horizontal angle, Mean declination, Latitude, Magnetic declination, Date) and Value (2° 32' 06", 234° 33' 40", 17° 44' 50", 45° 01' 05", 20° East, Aug. 2, 1982).

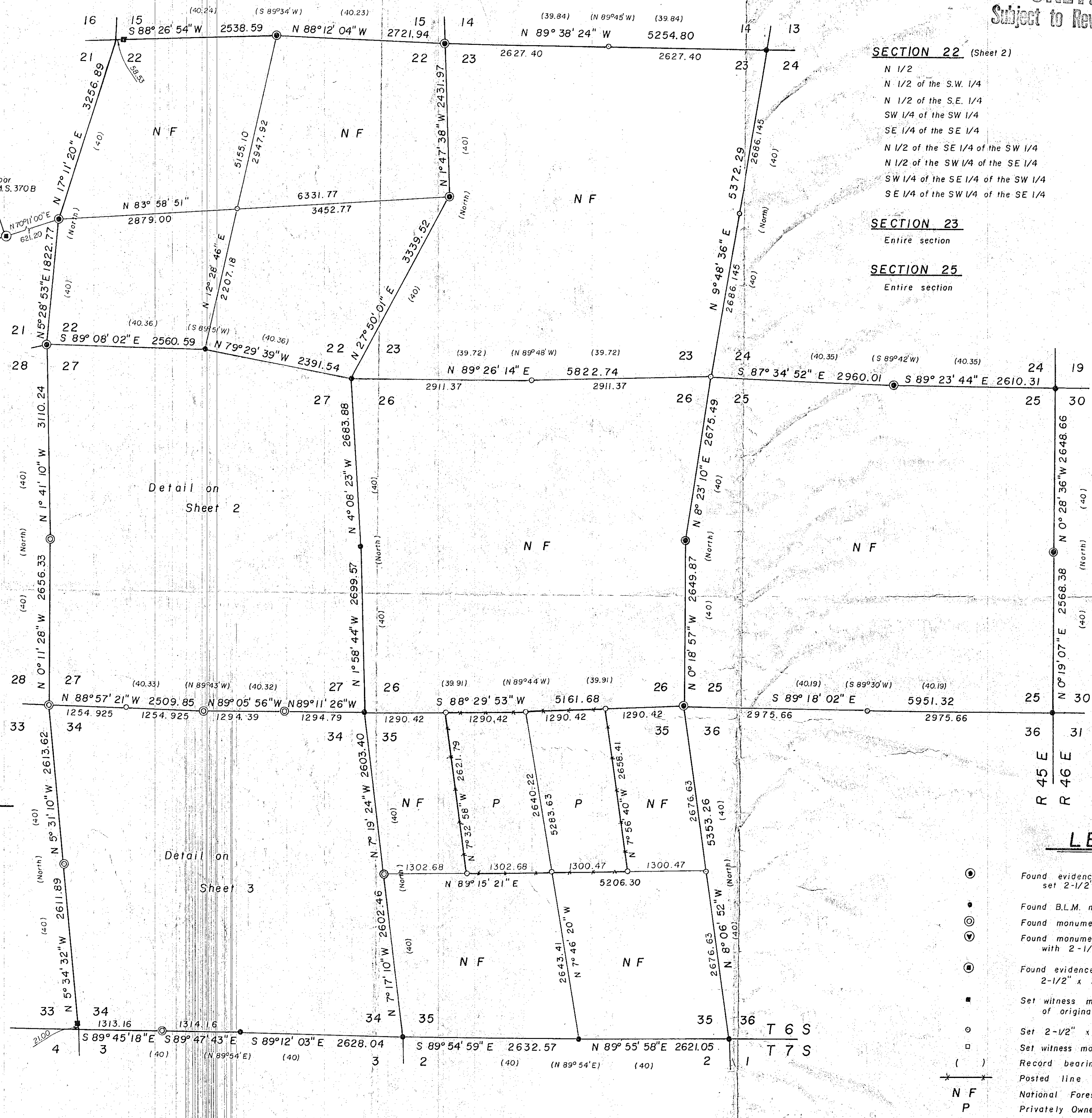
Detail on Sheet 2

Detail on Sheet 3

SURVEYORS STATEMENT

I, Duane Griffith, Registered Land Surveyor in the State of Oregon, hereby certify that this plat and the notes hereon, or attached are a true and correct representation of the survey I made during the summer and fall of 1982, for the U.S. Forest Service in accordance with the statutes of the State of Oregon and with the articles of my contract. The narrative description of this survey is filed separately.

REGISTERED PROFESSIONAL LAND SURVEYOR DUANE GRIFFITH 6441



SECTION 22 (Sheet 2) N 1/2 of the S.W. 1/4, N 1/2 of the S.E. 1/4, SW 1/4 of the SW 1/4, SE 1/4 of the SE 1/4, N 1/2 of the SE 1/4 of the SW 1/4, N 1/2 of the SW 1/4 of the SE 1/4, SW 1/4 of the SW 1/4 of the SE 1/4, SE 1/4 of the SW 1/4 of the SE 1/4

SECTION 26 Entire section SECTION 27 (Sheet 2) NE 1/4 of the NE 1/4, E 1/2 of the NW 1/4 of the NE 1/4, S 1/2 of the NE 1/4 of the NW 1/4, NW 1/4 of the NW 1/4, SE 1/4 of the NE 1/4, Parcel in the W 1/2 of the SW 1/4 of the NE 1/4 as shown on annexed plat, Parcel in the SE 1/4 of the NW 1/4, NE 1/4 of the SE 1/4, Parcels in the NW 1/4 of the SE 1/4 as shown on annexed plat, Parcel in the SW 1/4 of the SE 1/4 as shown on annexed plat, Parcels in the SW 1/4

SECTION 35 S 1/2, E 1/2 of the NE 1/4, W 1/2 of the NW 1/4 SECTION 34 (Sheet 3) S 1/2 of the NE 1/4, NE 1/4 of the NE 1/4, SW 1/4 of the NW 1/4 of the NE 1/4, SE 1/4 of the NW 1/4, S 1/2 of the NE 1/4 of the NW 1/4, S 1/2 of the NE 1/4 of the NW 1/4, N 1/2 of the NE 1/4 of the SW 1/4, Parcel in the NW 1/4 of the SW 1/4 as shown on annexed plat, Parcel in the SW 1/4 of the SW 1/4 as shown on annexed plat, Parcel in the SW 1/4 of the NW 1/4

REFERENCE MATERIAL

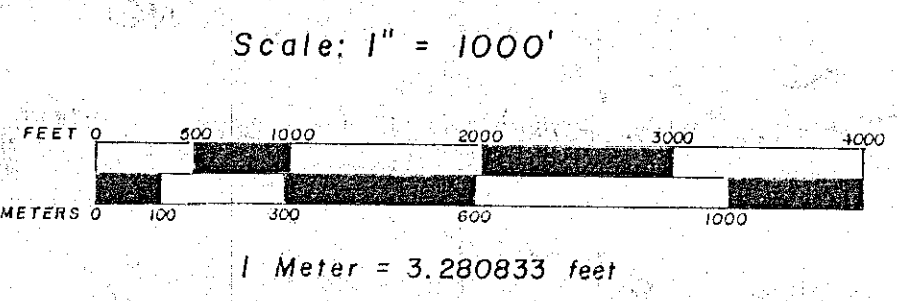
Table with 2 columns: General Land Office notes of original survey (U.S. Mineral Surveys, LaGrande land district, survey no.) and Remonumentation by the B.L.M. (Group 350, dated Aug. 22, 1974). Includes remonumentation records by others.

NOTES

- 1. For description of corner monuments, see remonumentation forms filed separately. 2. Written narrative of survey filed separately.

LEGEND

- Found evidence of original G.L.O. corner set 2-1/2" x 30" monument Found B.L.M. monument, as recorded Found monument, set by others, as recorded Found monument, set by others, as recorded, replaced with 2-1/2" x 30" monument Found evidence of original mineral survey, set 2-1/2" x 30" monument Set witness monument on basis of found evidence of original corner Set 2-1/2" x 30" monument at proportionate distance Set witness monument on basis of proportionate distance Record bearing & distance Posted line National Forest Land Privately Owned Land



SHEET 1 of 3 BAGETT - GRIFFITH & ASSOCIATES LaGrande, Oregon Map of Survey In the S.E. 1/4 of T 6 S, R 45 E, W.M. BAKER COUNTY, OREGON SURVEYED FOR Wallowa-Whitman National Forest SURVEYED BY d.i.g. - g.t.b. - r.g.r. 1982 Scale: 1" = 1000' Drawn by: d.i.g. 12/1982

FILED MARCH 8, 1983 BAKER COUNTY SURVEYOR SURVEY NO. 6-45-27