

# MAP OF SURVEY

LOCATED IN THE NE 1/4 OF THE NE 1/4 OF SECTION 32,  
TOWNSHIP 6 SOUTH, RANGE 44 EAST, WILLAMETTE MERIDIAN,  
BAKER COUNTY, OREGON  
NOVEMBER 16, 2009

## SURVEY FOR

SID JOHNSON & CO.  
JOSH ROHNER  
3150 10TH ST.  
BAKER CITY, OR 97814  
(541) 523-5737

## SURVEY BY

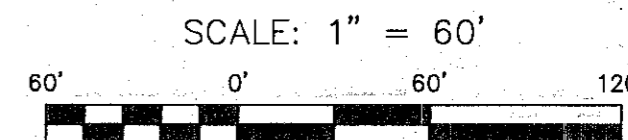
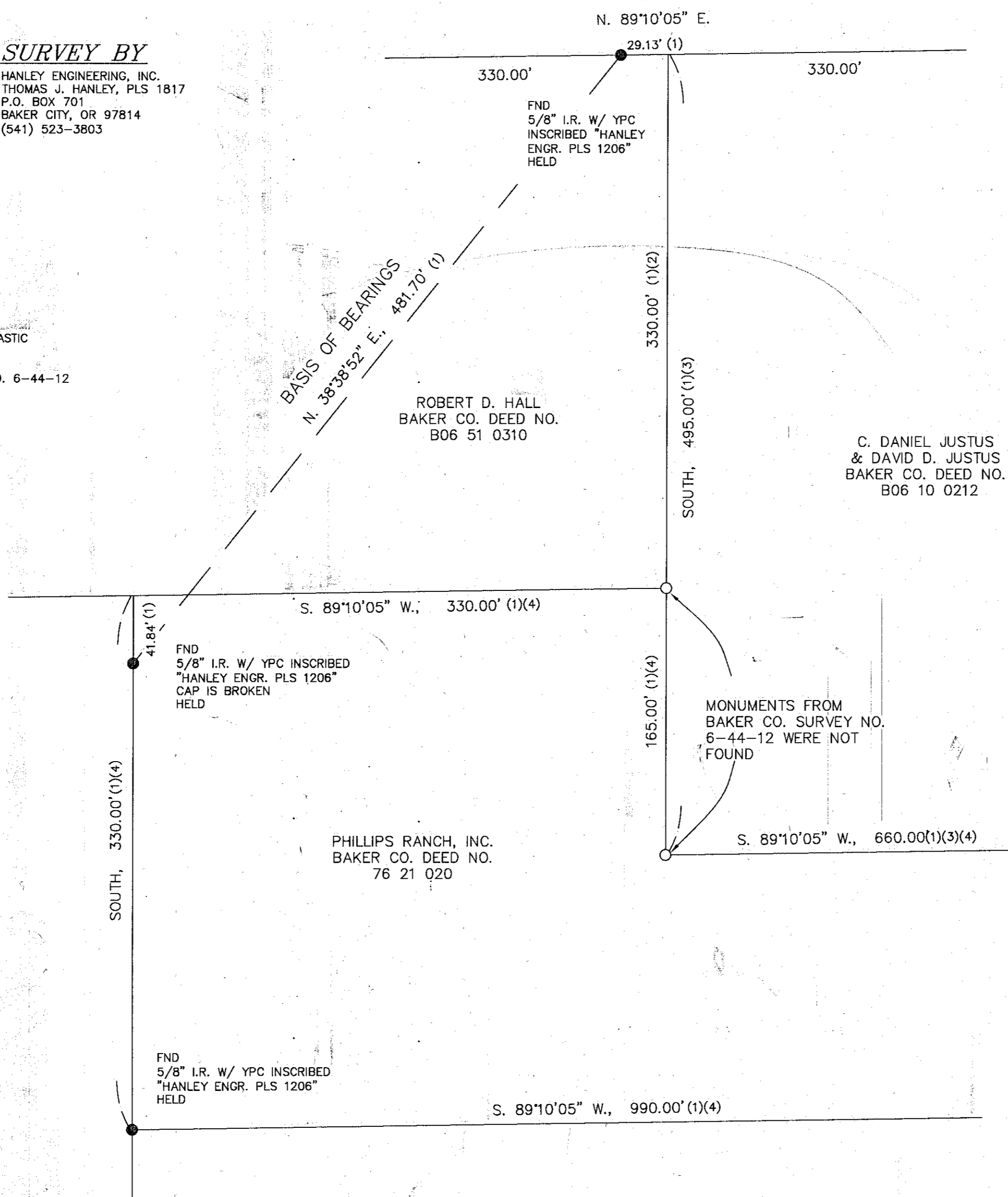
HANLEY ENGINEERING, INC.  
THOMAS J. HANLEY, PLS 1817  
P.O. BOX 701  
BAKER CITY, OR 97814  
(541) 523-3803

## LEGEND

- - SET 5/8" X 30" LONG IRON ROD WITH YELLOW PLASTIC CAP MARKED "HANLEY ENGR. PLS 1817".
- - FOUND MONUMENT AS SHOWN, BAKER CO. SUR. NO. 6-44-12
- (#) - RECORD REFERENCE NUMBER
- FND - FOUND
- YPC - YELLOW PLASTIC CAP
- W/ - WITH
- I.R. - IRON ROD

## REFERENCES

- 1 - BAKER COUNTY SURVEY NO. 6-44-12
- 2 - BAKER COUNTY DEED NO. B06 51 0310
- 3 - BAKER COUNTY DEED NO. B06 10 0212
- 4 - BAKER COUNTY DEED NO. 76 21 020



## NARRATIVE

THE PURPOSE OF THIS SURVEY FOR SID JOHNSON & CO., IS TO MARK UPON THE GROUND WITH PROPER MONUMENTATION THE COMMON NORTH-SOUTH LINE BETWEEN THOSE TRACTS OF LAND AS DESCRIBED IN BAKER COUNTY DEED NO. B06 10 0212 AND BAKER COUNTY DEED NO. 76 21 020.

RECORD BEARING AND DISTANCE WERE HELD AS PER BAKER COUNTY SURVEY NO. 6-44-12, BAKER COUNTY SURVEY RECORDS. THREE MONUMENTS WERE FOUND IN THE FIELD AND THEY WERE FOUND TO BE WITHIN ACCEPTABLE LIMITS AND HELD. MONUMENTS WERE THEN SET AT THE CALCULATED POSITIONS AS SHOWN. THE BASIS OF BEARINGS OF NORTH  $38^{\circ}38'52''$  EAST, 481.70 FEET, IS PER CALCULATED POSITIONS FROM BAKER COUNTY SURVEY NO. 6-44-12.

REGISTERED  
PROFESSIONAL  
LAND SURVEYOR

*Thomas J. Hanley*  
OREGON  
JULY 13, 1979  
THOMAS J. HANLEY  
1817

Renews June 30, 2011