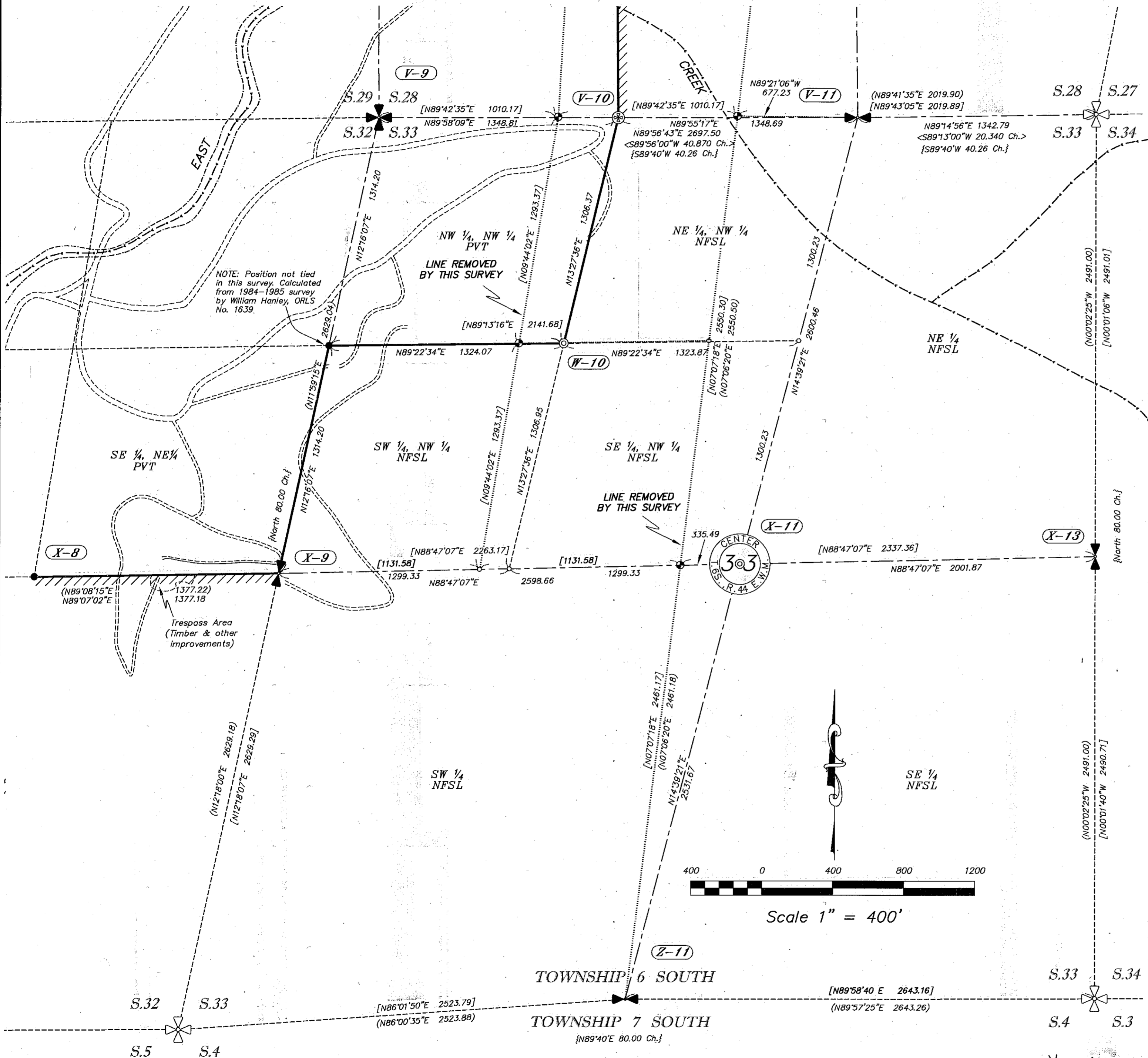


RECORD OF SURVEY

EAST EAGLE RERUN CADASTRAL SURVEY
 CONTRACT NO. AG-04M3-D-07-0033
 DEPENDENT RESURVEY AND SUBDIVISION
 OF SECTIONS 28, 32 AND 33 TOWNSHIP 6 S., RANGE 44E., W.M.
 BAKER COUNTY, OREGON



- ### LEGEND
- Fd. Section Corner / Quarter Corner as noted.
 - Calculated Section Corner position
 - Set, Standard USDA Aluminum Mon Stamped "ORLS 2367".
 - Standard USDA Aluminum Mon, "ORLS 1639" Set for "1984" - "1985" East-Eagle Survey.
 - Standard USDA Aluminum Mon, "ORLS 1639" Set for "1984" - "1985" East-Eagle Survey. (Removed by this Survey)
 - Fnd, 1988 BLM Mon. (See V-10 Corner Info)
 - Calculated Position
 - { B&D } Bear. & Dist. per "1884" GLO by William B. Barr
 - (B&D) Bear. & Dist. per "1985" ROS by ORLS No. 1639
 - [B&D] Bear. & Dist. Calculated from "1985" ROS by ORLS No. 1639.
 - < B&D > Bear. & Dist. per "1988" BLM Retracement
 - National Forest Boundary, Marked and Posted.

HISTORY OF SURVEYS

- 1) SOUTH BOUNDARY, WILLIAM B. BARR, CONTRACT 503, MAY 1884.
- 2) SUBDIVISIONS, WILLIAM B. BARR, CONTRACT 503, MAY 1884
- 3) 1989 BLM RETRACEMENT OF THE SOUTH LINE OF SEC. 28
- 4) RECORD OF SURVEY BY WILLIAM L. HANLEY, ORLS 1639, OCTOBER TO NOVEMBER, 1979.
- 5) RECORD OF SURVEY BY WILLIAM L. HANLEY, ORLS 1639, JULY, 1984 TO AUGUST, 1985.

SURVEYOR'S CERTIFICATE

I, Robert C. Lamburth, registered Oregon Land Surveyor No. 2367, do hereby certify that this Plat and the notes hereon, or attached, are a correct representation of a Survey I performed between October, 2007 through August, 2008, for the USDA, Wallowa-Whitman National Forest, in accordance with the statutes of the State Of Oregon and with the Articles in my Contract.

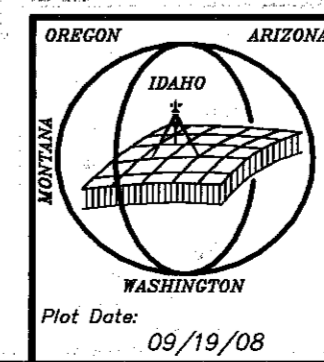
Robert C. Lamburth
 Robert C. Lamburth, OS 2367

REGISTERED PROFESSIONAL LAND SURVEYOR

Robert C. Lamburth
 11/21/08

OREGON
 July 28, 1988
 ROBERT C. LAMBURTH
 2367

FILED Nov. 26, 2008
 BAKER COUNTY SURVEYOR
 SURVEY NO. 6-44-86



RECORD OF SURVEY FOR EAST EAGLE RERUN CADASTRAL SURVEY

GLAHE & ASSOCIATES, INC.
 PROFESSIONAL LAND SURVEYORS
 303 Church Street
 Sandpoint, Idaho 83864
 208-265-4474

Scale: 1 in. = 400 ft.

Checked By: RCL
 Drawn By: D.P. Evans

Date: August, 2008
 Sheet: 2 of 4