

# RECORD OF SURVEY

EAST EAGLE RERUN CADASTRAL SURVEY  
 CONTRACT NO. AG-04M3-D-07-0033  
 DEPENDENT RESURVEY AND SUBDIVISION  
 OF SECTIONS 28, 32 AND 33 TOWNSHIP 6 S., RANGE 44E., W.M.  
 BAKER COUNTY, OREGON

## LEGEND

- Fd. Section Corner / Quarter Corner as noted.
- Calculated Section Corner position
- Set, Standard USDA Aluminum Mon Stamped "ORLS 2367".
- Standard USDA Aluminum Mon, "ORLS 1639" Set for "1984" - "1985" East-Eagle Survey.
- Standard USDA Aluminum Mon, "ORLS 1639" Set for "1984" - "1985" East-Eagle Survey. (Removed by this Survey)
- Fnd, 1988 BLM Mon. (See V-10 Corner Info)
- Calculated Position
- { B&D } Bear. & Dist. per "1984" GLO by William B. Barr
- ( B&D ) Bear. & Dist. per "1985" ROS by ORLS No. 1639
- [ B&D ] Bear. & Dist. Calculated from "1985" ROS by ORLS No. 1639.
- < B&D > Bear. & Dist. per "1988" BLM Retracement
- National Forest Boundary, Marked and Posted.

## BASIS OF BEARINGS

Bearing Datum is Geodetic, derived From GPS-Static and RTK observations with Trimble R-6 Dual Frequency Receivers. Coordinate Datum has a Combined State Plane and Sea Level Factor (CAF) of 1.0002974236 at the NW corner sec. 33 directly applied to OSP, North Zone 3601, NAD 83 coordinate datum in order to represent actual ground distances. Geodetic North, from OSP, is an angular rotation of 2'14.22" RT.

## METHOD OF SURVEY

The Control Survey was performed using TRIMBLE DUAL FREQUENCY R-6, GPS RECEIVERS and Data processed using TRIMBLE GEOMATICS OFFICE SOFTWARE. The Survey was completed by Conventional Traverse and Radial Tie techniques using a Total Station.

## SURVEYOR'S CERTIFICATE

I, Robert C. Lamburth, registered Oregon Land Surveyor No. 2367, do hereby certify that this Plat and the notes hereon, or attached, are a correct representation of a Survey I performed between October, 2007 through August, 2008, for the USDA, Wallowa-Whitman National Forest, in accordance with the statutes of the State Of Oregon and with the Articles in my Contract. Robert C. Lamburth, OS 2367

REGISTERED  
PROFESSIONAL  
LAND SURVEYOR

*Robert C. Lamburth*  
11/11/08

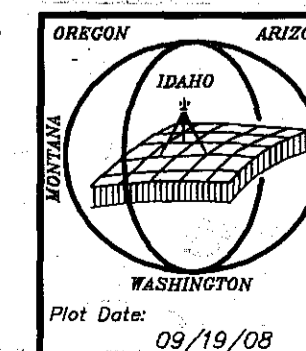
OREGON  
July 28, 1988  
ROBERT C. LAMBURTH  
2367

## FOREST SERVICE CERTIFICATION

Examined and accepted for the USDA, Forest Service this 18th day of November, 2008.

*Ken Lind* C.O.R.  
I certify that this Survey was performed at the request of the Wallowa-Whitman National Forest Supervisor.

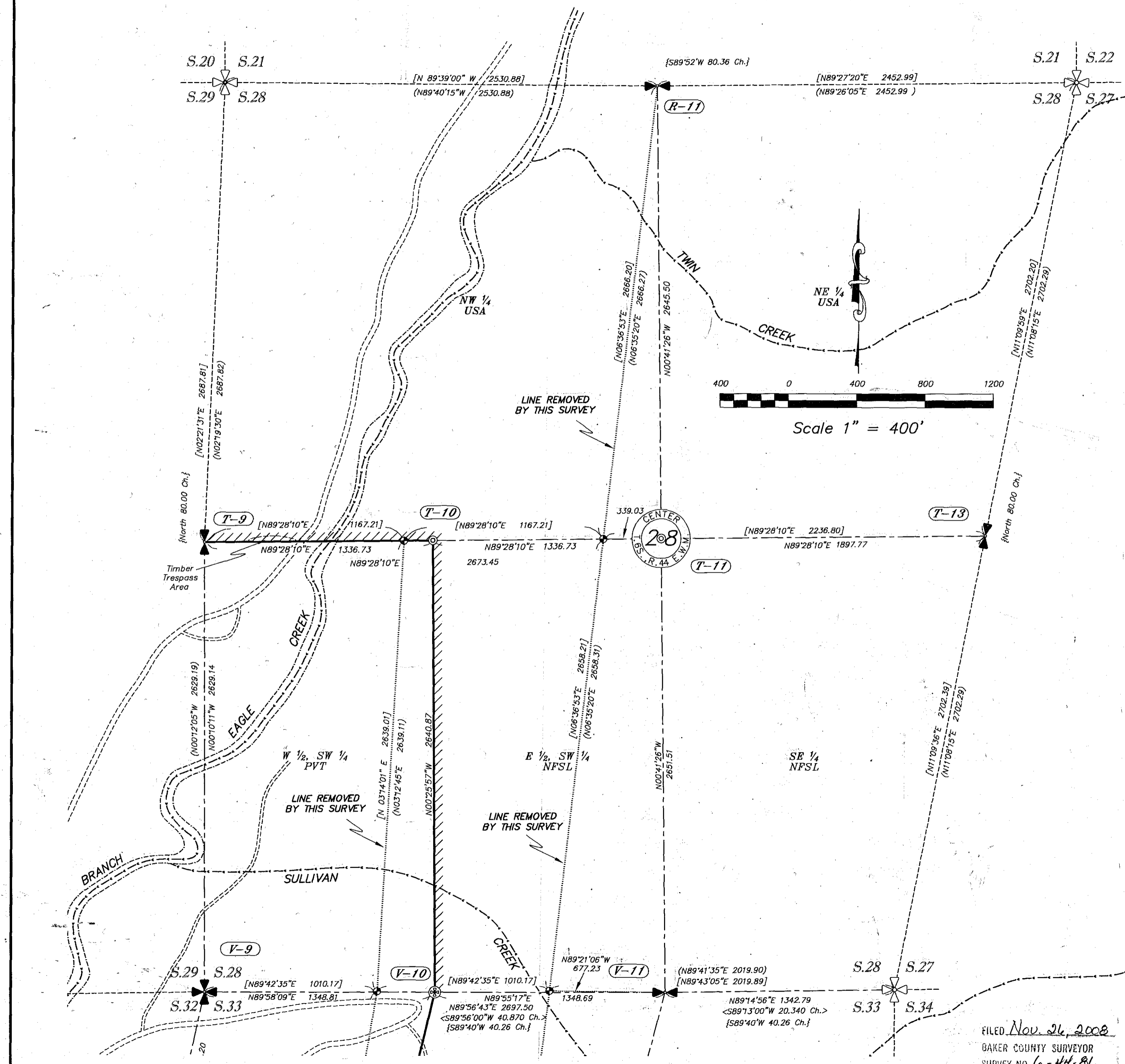
*Steven Kella* 11/19/08  
(Forest Supervisor) Date



**RECORD OF SURVEY**  
FOR  
**EAST EAGLE RERUN CADASTRAL SURVEY**

GLAHE & ASSOCIATES, INC.  
PROFESSIONAL LAND SURVEYORS  
303 Church Street  
Sandpoint, Idaho 83864  
208-265-4474

Scale: 1 in. = 400 ft.  
Checked By: RCL  
Date: August, 2008  
Drawn By: D.P. Evans  
Sheet: 1 of 4



FILED Nov. 26, 2008  
BAKER COUNTY SURVEYOR  
SURVEY NO. 6-44-86