

# TOWNSHIP 6 SOUTH, RANGE 44 EAST, OF THE WILLAMETTE MERIDIAN, OREGON

## DEPENDENT RESURVEY

A history of surveys is contained in the field notes.

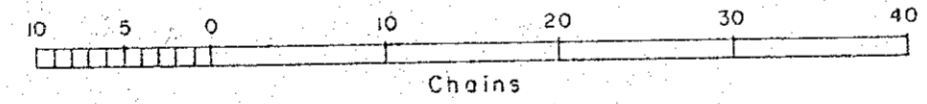
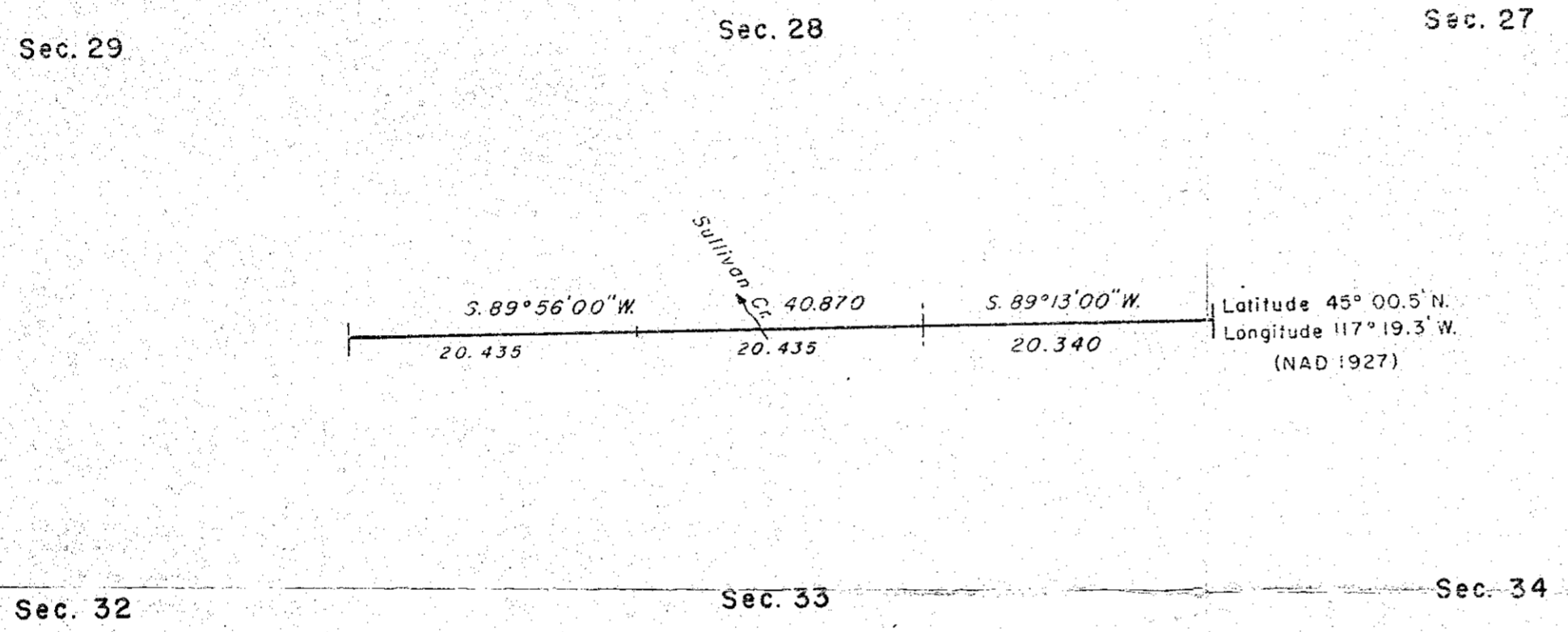
This plat represents a dependent resurvey of a portion of the subdivision lines, T.6S., R.44E., Willamette Meridian, Oregon, designed to restore the corners in their true original locations according to the best available evidence.

The survey was executed by Lawrence D. Holmes, Cadastral Surveyor, beginning October 7, 1987, and completed October 27, 1988, pursuant to Special Instructions dated September 30, 1987, under Group Number 1412, Oregon.

Timber in this area consists of fir, larch and pine.



Mean magnetic declination  
20° EAST



UNITED STATES DEPARTMENT OF THE INTERIOR  
BUREAU OF LAND MANAGEMENT

Portland, Oregon                      January 20, 1989

This plat is strictly conformable to the approved field notes, and the survey, having been correctly executed in accordance with the requirements of law and the regulations of this Bureau, is hereby accepted.

For the Director

*Wayne M. Anderson*  
Chief Cadastral Surveyor of Oregon

USA