

CERTIFIED RECORD OF LAND CORNER MONUMENTATION

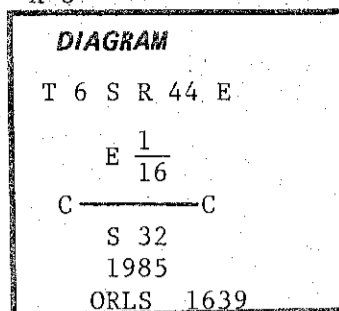
X-8

History of original corner establishment:

Corner originally established by W. L. Hanley and recorded under Baker County Survey No. 6-44-12, filed Aug. 01, 1980.

Record of Survey states:

Set 5/8" x 30" rebar.



Description of corner evidence found:

Found a 5/8" x 30" rebar with a yellow plastic cap marked RPE
2808

NOTE: This found rebar bears S 45°04'03" E, 0.48 ft dist from corner position established this survey.

Description of monument and accessories established to perpetuate the original location of this corner:

Set 2½" aluminum cap on 2" aluminum pipe 30" long 25" in ground with 5" proj out of ground with surrounding rock mound and 6' steel fence post alongside with sign 54-9 attached. Buried rebar alongside aluminum capped monument.

Aluminum cap marked as shown in corner diagram.

New bearing trees established:

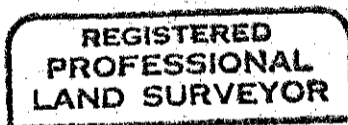
A pine 8 ins dia brs S09°W, 21,3 ft dist mkd CE1/16S32 BT.

A fir 12 ins dia brs S77°W, 18.9 ft dist mkd CE1/16S32 BT.

Each new bearing tree has signs 54-3 and 54-9 attached below a 6" band of red paint and a brass washer marked PLS 1639 nailed flush with BT blaze.

I hereby certify that the above corner monument was properly maintained to U.S.F.S. standards under my supervision and witnessed by Jim DeMastus and Daryl Schuchardt on July 19, 1985.

Witnessed : Jim DeMastus



William L. Hanley
OREGON
JULY 14, 1978
WILLIAM L. HANLEY
1639

Office of...County Surveyor..... County of..Baker.....
State of...Oregon....., I hereby certify that the within instrument was filed in this office
for record on the..... day of....., 19.....

..... by
(COUNTY OFFICIAL)

.....
(DEPUTY)

FILED 4-28-86
BAKER COUNTY SURVEYOR
SURVEY NO. 6-44-56