

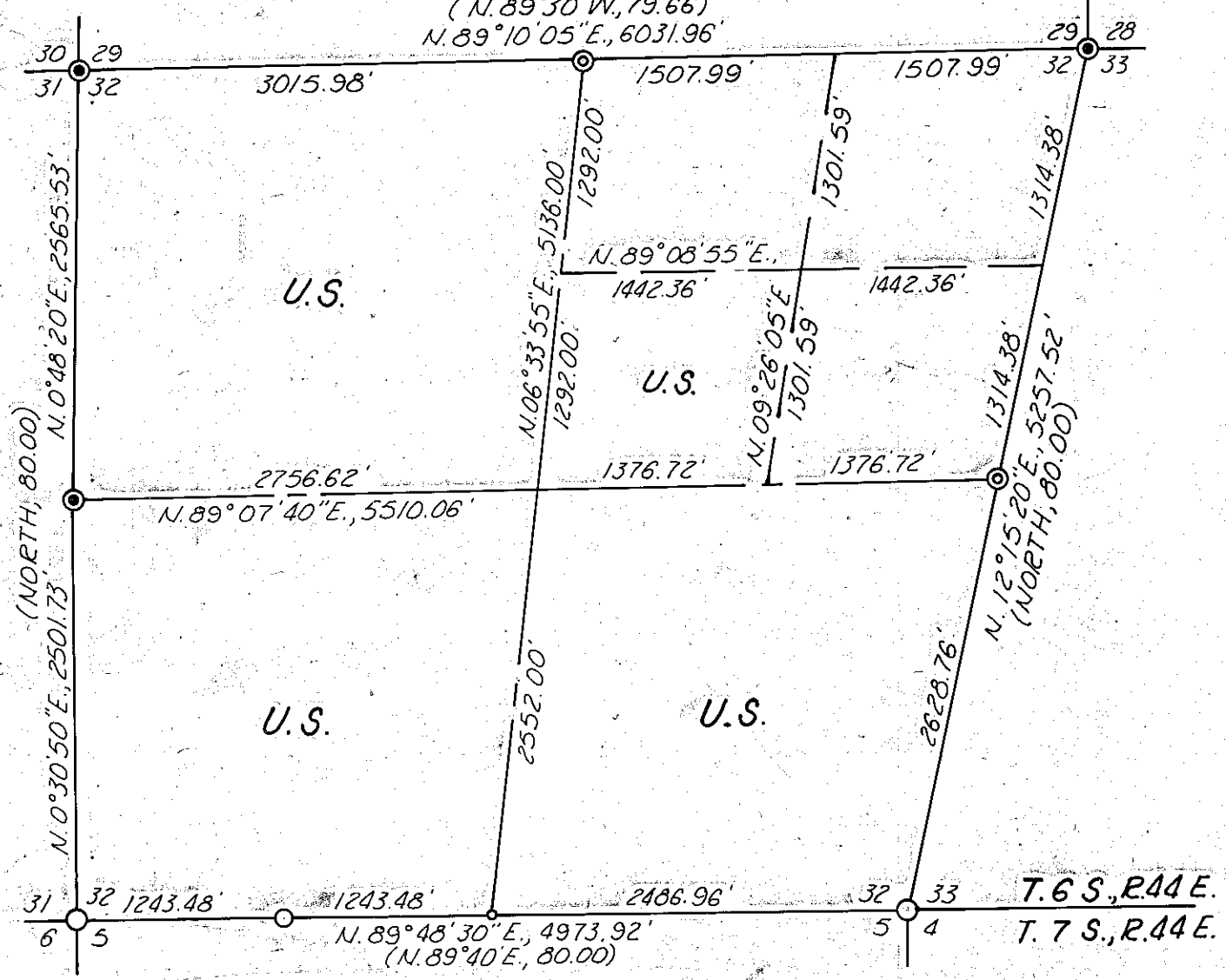
Meridian by Solar Obs.
Refer Survey No. 7-44-11.

LEGEND

- ⊙ FOUND ORIG. G.L.O. CORNER,
SET 2½" BRASS CAP ON 1" IRON PIPE.
- ⊙ CORNER POSITION BY PROPORTION,
SET 2½" BRASS CAP ON 1" IRON PIPE.
- CORNER MONUMENT OF RECORD.
- CORNER POSITION OF RECORD.
- () G.L.O. RECORD

REFERENCE: SURVEY NO. 7-44-11 FILED OCT. 4, 1978.

(N. 89° 30' W., 79.66)
N. 89° 10' 05" E., 6031.96'



NOTE: FOR MONUMENTATION RECORDS SEE CERTIFIED RECORD OF LAND CORNER MONUMENTATION SHEETS FILED SEPARATELY - SURVEY NOS. 6-44-5 THROUGH 6-44-10.

MAP OF SURVEY

SUBDIVISION OF SECTION 32, T. 6 S., R. 44 E., W. M.

Surveyed Oct. 12 - Nov. 15, 1979

Scale 1" = 1000'

FILED Dec. 17, 1979

BAKER COUNTY SURVEYOR
SURVEY NO. 6-44-11

REGISTERED
PROFESSIONAL
LAND SURVEYOR

William L. Hanley

OREGON
JULY 14, 1978
WILLIAM L. HANLEY
1639