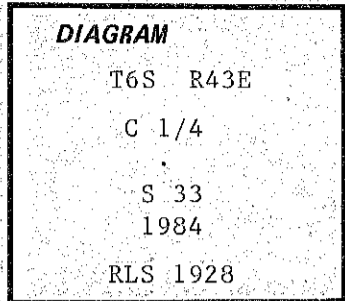


CERTIFIED RECORD OF LAND CORNER MONUMENTATION

History of original corner establishment:

Not previously established.



Description of corner evidence found:

Not previously established.

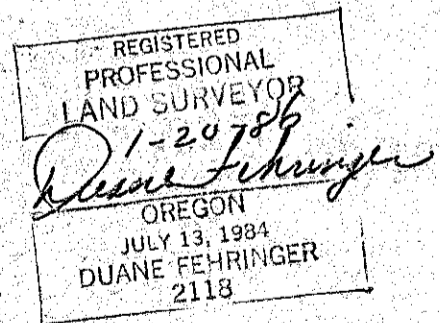
Description of monument and accessories established to perpetuate the original location of this corner:

Set 30" aluminum pipe with 3 1/4" aluminum cap, marked as shown, 4" above ground. Steel post with 54-9 sign set next to cap.

Scribed:

- 6" fir N.65°W. 18.2' "C 1/4 S33 BT"
- 8" fir N.20°W. 33.3' "C 1/4 S33 BT"

Attached signs 54-3 & 54-9 and nailed aluminum washers stamped "RLS 1928" by "BT" scribe on each tree. Painted blazes red and a 6" red band around both trees.



Office of..... County of.....
 State of....., I hereby certify that the within instrument was filed in this office
 for record on the..... day of....., 19.....
 by.....
 (COUNTY OFFICIAL) (DEPUTY)

FILED May 9, 1986
 BAKER COUNTY SURVEYOR
 SURVEY NO. G-43-106