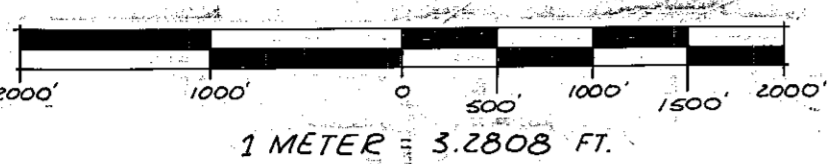


LEGEND

- FOUND 1/2" BRASS CAP ON 3" IRON PIPE ESTABLISHED IN 1974
- △ FOUND 2 1/2" BRASS CAP ON 2" IRON PIPE ESTABLISHED IN 1978 AND 1982
- FOUND 2 1/2" ALUMINUM CAP ON 1" IRON PIPE ESTABLISHED IN 1965
- FOUND 2 1/2" BRASS CAP ON 1" IRON PIPE ESTABLISHED IN 1977, 1978 AND 1979
- SET TYPICAL ALUMINUM MONUMENT - 2 1/2" ALUMINUM CAP ON 3" ALUMINUM PIPE 30" LONG - AT RECONSTRUCTED OR PROPORTIONED POSITION
- SET TYPICAL ALUMINUM MONUMENT AT POSITION ESTABLISHED FROM RECOVERED ORIGINAL GLO EVIDENCE
- SET TYPICAL ALUMINUM MONUMENT - POSITION PREVIOUSLY MARKED WITH 3/8" x 30" STEEL REBAR WITH YELLOW PLASTIC CAP MARKED: ORLS
- () RECORD OF ORIGINAL SURVEY PERFORMED BY W.B. BARR UNDER GLO CONTRACT NO. 503 DURING AUGUST AND SEPTEMBER, 1884
- [] RECORD OF BAKER COUNTY SURVEY NO. 7-44-11 PERFORMED BY W.L. HANLEY FROM APRIL, 1971, TO OCTOBER, 1972
- () RECORD OF BAKER COUNTY SURVEY NO. 6-44-11 PERFORMED BY W.L. HANLEY DURING OCTOBER AND NOVEMBER, 1979
- NATIONAL FOREST BOUNDARY MARKED WITH 6-FOOT STEEL FENCE POSTS AND BOUNDARY SIGNS 54-2 ATTACHED

SOLAR OBSERVATION DATA

TRAVERSE STATION NO. 420 BEARS
 N. 81° 10' 40" E., 1490.50' FROM QUARTER SECTION CORNER COMMON TO SECTIONS 25 & 36, T. 43 S., R. 43 E., W.M.
 AUGUST 06, 1985
 LATITUDE 45° 00' 26" N.
 DECLINATION N. 16° 46' 42.0"
 ZENITH ANGLE 62° 12' 40"
 MEAN DECLINATION 18° 50' E.



NOTES

FOR RECORD OF CORNER MONUMENTATION SEE RECORD OF LAND CORNER MONUMENTATION SHEETS FILED SEPARATELY.

FIELD BOOK REFERENCE
 EAST EAGLE TRAVERSE BOOKS #1 THRU #3
 EAST EAGLE MONUMENTATION BOOKS #1, #2 & #3

SURVEY NARRATIVE

THIS SURVEY WAS PERFORMED UNDER CONTRACT WITH THE USDA FOREST SERVICE FOR THE PURPOSE OF STILLING CERTAIN GLO LAND SURVEY CORNERS AND TO ESTABLISH THE BOUNDARY BETWEEN THE PUBLIC DOMAIN ADMINISTERED BY THE USDA FOREST SERVICE AND LANDS HELD UNDER PRIVATE OWNERSHIP AS SHOWN ON THIS PLAT AND NOTED ON THE ACCOMPANYING LEGEND. THE BOUNDARIES ESTABLISHED BY THIS SURVEY ARE MARKED BY 6-FOOT LONG STEEL FENCE POSTS WITH BOUNDARY SIGNS 54-2 ATTACHED AND SPACED APPROXIMATELY 250 FEET APART. CORNERS ARE MONUMENTED WITH A 2 1/2" ALUMINUM CAP ATTACHED TO A 2 1/2" ALUMINUM PIPE, 30 INCHES LONG, SET 25 INCHES IN THE GROUND WITH A SURROUNDING ROCK MOUND AND MARKED WITH THE PRESCRIBED IDENTIFYING MARKINGS. EQUIPMENT USED TO PERFORM THIS SURVEY WAS A 6-SECOND THEODOLITE AND ELECTRONIC DISTANCE METER CONTAINED IN A SINGLE UNIT TOTAL STATION. CORNER POSITIONS ESTABLISHED BY SURVEY WERE PERFORMED WITH A 6-SECOND THEODOLITE AND 200-FOOT STEEL TAPE. MEASUREMENTS TO CORNER ACCESSORIES WERE TAKEN WITH A 60-MINUTE STAFF COMPASS WITH 3-INCH NEEDLE AND 200-FOOT STEEL TAPE. ALL SURVEY CONTROL DATA OBTAINED FROM CLOSED-LOOP RANDOM BOUNDARY TRAVERSE BOUNDARY ESTABLISHED BY OFFSET METHOD FROM SURVEY CONTROL, TWO INCIDENCES OF ENCROACHMENT UPON THE PUBLIC DOMAIN BY PRIVATE OWNERSHIP WERE DISCOVERED AND ARE SHOWN IN DETAIL "A" AND "C".

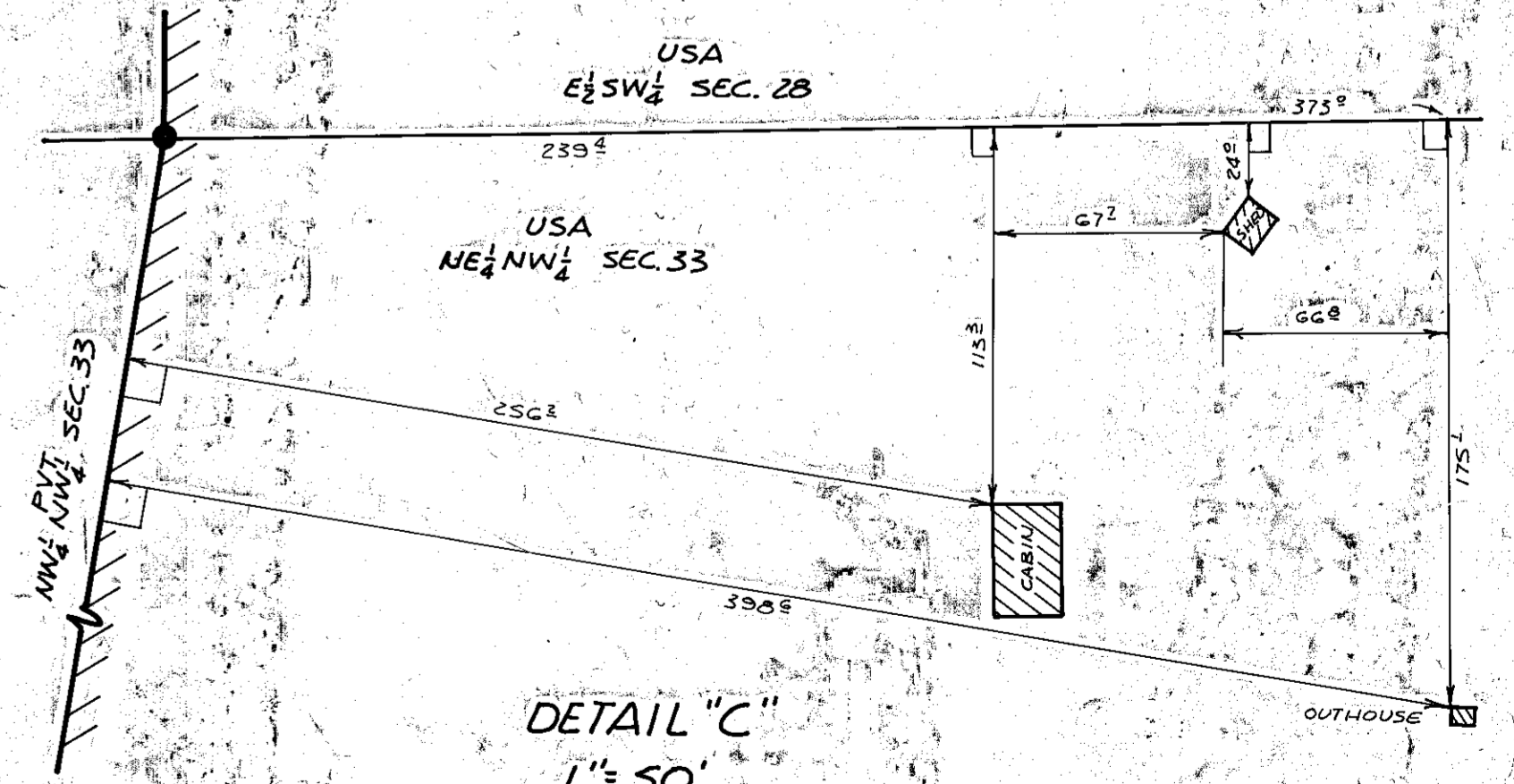
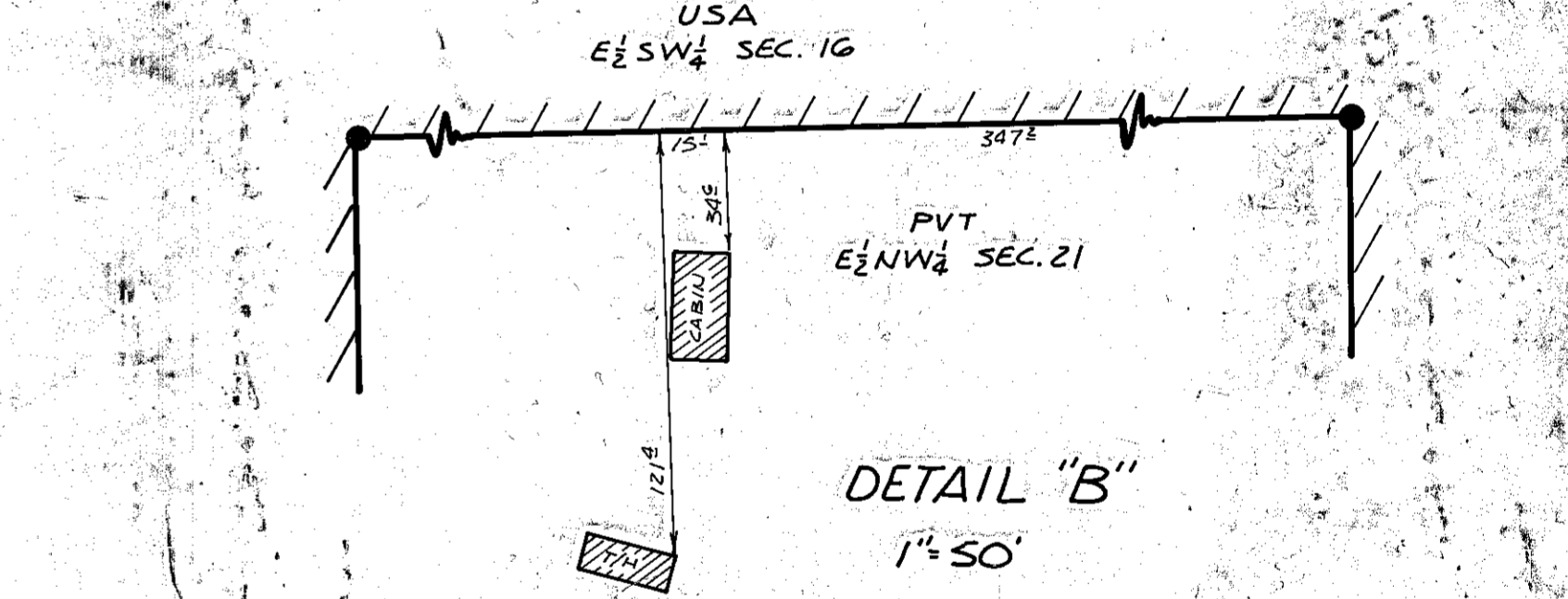
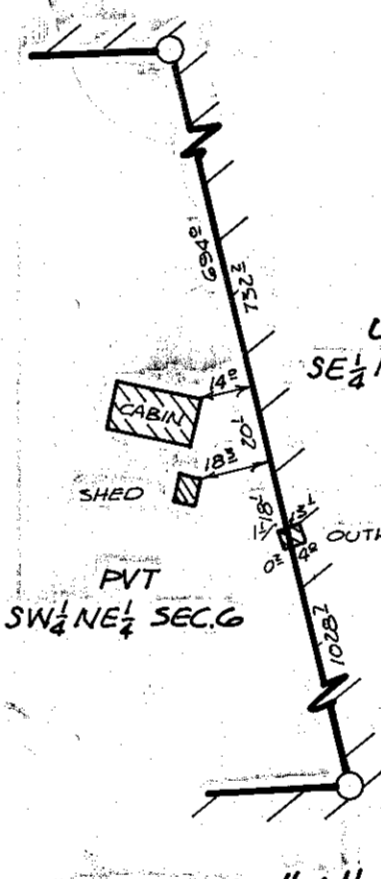
THE ORIGINAL SURVEY IN T. 43 S., R. 43 & 44 E., W.M., WAS PERFORMED BY W.B. BARR UNDER GLO SURVEY CONTRACT NO. 503 FROM AUGUST 20 TO SEPTEMBER 5, 1884. THE RESULTS OF THIS RETRACEMENT SHOW THE ORIGINAL SURVEY WAS NOT PERFORMED IN THE PRESCRIBED MANNER OR WITHIN THE ACCURACY LIMITS REQUIRED OF GLO CONTRACT SURVEYORS IN PERFORMING ORIGINAL RECTANGULAR SURVEYS. REFERENCE PLAT AND NARRATIVE OF BAKER COUNTY SURVEY NO. 7-44-11, FILED OCT. 4, 1978, PERFORMED BY THIS SURVEYOR W.L. HANLEY.

THREE OBLITERATED CORNER POSITIONS IN T. 43 S., R. 44 E., W.M., WERE REESTABLISHED BY RESOLUTION OF RECOVERED ACCESSORY TOPOGRAPHIC AND COLLATERAL CALLS AS FOLLOWS:
 THE CORNER TO SECTIONS 19, 20, 29 & 30 WAS REESTABLISHED FROM TOPOGRAPHIC CALLS TO "DIVIDING RIDGE", 3.68 CHAINS (242.9 FT) WEST AND "SPUR" 5 CHAINS (330 FT) EAST. THE DIVIDING RIDGE AND SPUR DIVERGE RAPIDLY AT THE APPROXIMATE POSITION OF THIS OBLITERATED CORNER AND CORNER POINT ESTABLISHED BY TRIAL AND ERROR MEASUREMENT BETWEEN RECORD TOPOGRAPHIC CALLS. THIS POSITION IS SUPPORTED BY ALIGNMENT WITH RIDGE RUNNING SOUTH AND LINE TREE SOUTH.

THE QUARTER-SECTION CORNER COMMON TO SECTIONS 25 & 30 IS RELOCATED ON LINE BETWEEN THE ABOVE DESCRIBED REESTABLISHED SECTION CORNER NORTH AND RECOVERED LINE TREE SOUTH AND AT RECORD DISTANCE 6.10 CHAINS (402.6 FT) FROM SAID LINE TREE. THE RECORD CALLS FOR "A BASALT STONE 20" x 15" x 5" IN PLACE AT 400 CHAINS AND "A FIR 40 INCHES DIAM. AT 46.10 CHAINS. THERE IS A SMALL AREA OF EXPOSED BOULDER-SIZED STONE OF GENERAL RECORD SIZE AT THE RECORD 6.10 CHAINS NORTH OF RECOVERED LINE TREE AND NO STONE AT ALL AT 6.10 CHAINS SOUTH OF LINE TREE. IT WAS DETERMINED THAT THIS CORNER WAS ORIGINALLY ESTABLISHED BY RUNKIN'S SOUTH FROM THE SECTION CORNER NORTH WHICH PLACES THE LINE TREE AND IN-PLACE STONES IN PROPER RELATIVE PLACEMENT AND THAT THE CALLS ARE REVERSED DUE TO FRAUDULENT ENTRY.

THE QUARTER-SECTION CORNER COMMON TO SECTIONS 19 & 20 IS REESTABLISHED ALONG THE EXTENDED LINE BETWEEN THE TWO CORNERS ABOVE DESCRIBED AND AT THE RECORD DISTANCE OF 2.0 CHAINS SOUTH OF SPUR. IT WAS DETERMINED DOUBTFUL THE ORIGINAL SURVEYOR CONTINUED HIS LINE NORTH.

NO ACCESSORY OR SUFFICIENT COLLATERAL EVIDENCE WAS RECOVERED FOR ELEVEN CORNERS DECLARED LOST AND THESE POSITIONS WERE MONUMENTED BY SINGLE PROPORTIONATE MEASUREMENT BETWEEN ADJACENT FOUND CORNERS.



PUBLIC DOMAIN IN 1/2 SEC. 6, T. 7 S., R. 44 E., W.M.
 NE 1/4 SEC. 6, SE 1/4 SEC. 6, E 1/2 SW 1/4 SEC. 6, SW 1/4 SEC. 6
 NW 1/4 SEC. 6, SE 1/4 NE 1/4 SEC. 6, SE 1/4 SW 1/4 SEC. 6, SW 1/4 SW 1/4 SEC. 6, NW 1/4 SW 1/4 SEC. 6

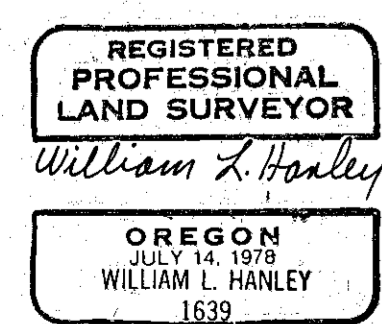
**RECORD OF SURVEY PLAT
 IN T. 43 S., R. 43 & 44 E., W.M.
 EAST EAGLE CADASTRAL SURVEY**

USDA FOREST SERVICE CONTRACT NO. 55-CAM3-4-3001
 Surveyed July, 1984 to August, 1985 Scale 1"=1000'

SURVEYOR'S CERTIFICATION

I, WILLIAM L. HANLEY, A REGISTERED PROFESSIONAL LAND SURVEYOR IN THE STATE OF OREGON, HEREBY CERTIFY THAT THIS PLAT AND THE NOTES CONTAINED HEREON OR ATTACHED ARE A CORRECT REPRESENTATION OF A SURVEY PERFORMED BY ME FROM JULY, 1984, TO AUGUST, 1985, AT THE REQUEST OF THE USDA FOREST SERVICE IN FULL ACCORDANCE WITH THE STATUTES OF THE STATE OF OREGON AND WITH THE ARTICLES OF MY CONTRACT.

William L. Hanley
 ORLS 1639



SURVEYED BY: WILLIAM L. HANLEY, ORLS 1639, DBA
 BILL HANLEY SURVEYING CO.
 P.O. BOX 824
 BAKER, OREGON 97814 (503) 525-4325

FILED 4-28-86
 BAKER COUNTY SURVEYOR
 SURVEY NO. 6-44-13
 7-44-208
 6-43-69