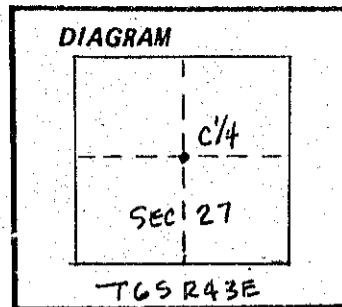


CERTIFIED RECORD OF LAND CORNER MONUMENTATION

History of original corner establishment:

No record of corner being established found in County Surveyors Office.



Description of corner evidence found: None.

Description of monument and accessories I established to perpetuate the original location of this corner.

At the calculated corner position I set a 2" x 30" iron pipe with brass cap marked:

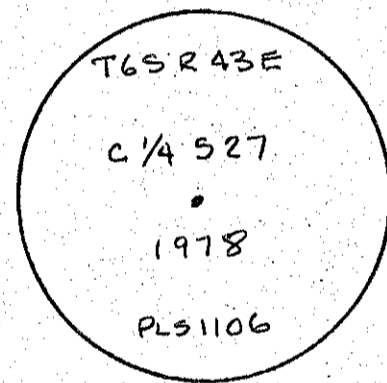
Set monument 24" in ground and surrounded with a mound of earth and stone to cap from which:

An 11" Red Fir bears N 58° E for 11.2 feet, scribed C 1/4 S27 BT.

A 28" Ponderosa Pine bears N 38 1/2° W for 20.3 feet, scribed C 1/4 S27 BT.

Both BT's have a lower blaze scribed BT with a brass washer stamped PLS 1106 nailed flush. Attached signs 54-3 and painted a red ring around each BT.

Set a steel fence post with sign 54-9 attached next to monument.



Witness: Les Wilson

Used magnetic compass with 20 1/2° E declination and measured to center of BT's at root crown with steel tape.

REGISTERED
PROFESSIONAL
LAND SURVEYOR

William R. Wells

OREGON
JULY 22, 1977
WILLIAM R. WELLS
1106

11-1-78

Office of..... County of.....

State of..... I hereby certify that the within instrument was filed in this office
for record on the..... day of....., 19.....

..... by
(COUNTY OFFICIAL) (DEPUTY)

Form R6-7100-57 (9/71)

☆ GPC--798.276

FILED *Nov. 3, 1978*
BAKER COUNTY SURVEYOR
SURVEY NO. *6-43-31*