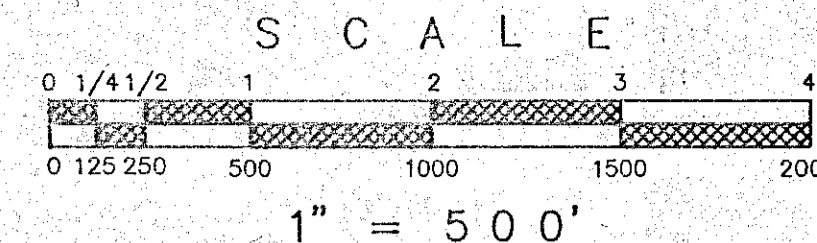


GRAVEL FLAT CADASTRAL SURVEY WALLOWA-WHITMAN NATIONAL FOREST



LEGEND

- FOUND G-L-O EVIDENCE, SET A U.S.F.S. 3" DIAM. ALUMINUM CAPPED PIPE, 30" LONG, WITH MAGNET, MARKED PER B-L-M MANUAL, SEE TYPICAL CAP FOR STANDARD MARKINGS
- FOUND MS 938 EVIDENCE, SET A 3" DIAM. U.S.F.S. ALUMINUM CAPPED PIPE, 30" LONG, WITH MAGNET, MARKED PER B-L-M MANUAL, SEE TYPICAL CAP FOR STANDARD MARKINGS
- ⊙ FOUND 2" DIAM. IRON PIPE WITH BRASS CAP - PLS 1206
- ⊙ SET A 3" DIAM. U.S.F.S. ALUMINUM CAPPED PIPE, 30" LONG, WITH MAGNET, MARKED PER B-L-M MANUAL, SEE TYPICAL CAP FOR STANDARD MARKINGS
- [] RECORD BEARING AND/OR DISTANCE, G-L-O, 1880
- () RECORD BEARING AND/OR DISTANCE, MS 938, 1955
- N.F.S.L. = NATIONAL FOREST SYSTEM LANDS BOUNDARY LINE POSTED TO STANDARD

SURVEY NARRATIVE

BASIS OF BEARING WAS A SOLAR OBSERVATION TAKEN ON 04/03/1992 AT A POINT 6030 FEET NORTH AND 1798 FEET WEST OF THE NE CORNER OF SECTION 21. THE MAGNETIC DECLINATION FOR THIS SURVEY IS 1 1/2' EAST AS DETERMINED FROM A U.S.G.S. TOPO MAP FOR THIS PROJECT AREA.

THIS SURVEY REPRESENTS A RECORD OF THE PARTIAL RETRACEMENT AND/OR SUBDIVISION OF SECTIONS 20 & 21, T 6 S, R 42 E, W.M., BAKER COUNTY, OREGON.

THIS SURVEY WAS PERFORMED AT THE REQUEST OF THE FOREST SUPERVISOR, WALLOWA-WHITMAN NATIONAL FOREST, BAKER CITY, OREGON.

THE PURPOSE OF THIS SURVEY WAS TO DETERMINE THE BOUNDARY LINES BETWEEN THE PRIVATE AND PUBLIC LAND ADMINISTERED BY THE U.S. FOREST SERVICE IN SECTION 20 & 21 AND TO POST TO STANDARD THOSE BOUNDARIES.

THE PROCEDURES USED IN THIS SURVEY WERE IN ACCORDANCE WITH THE CONTRACT SPECIFICATIONS, THE 1973 B-L-M MANUAL AND STATE LAW, RESULTING IN AN ERROR OF CLOSURE OF 1 AND 5000 OR BETTER.

THE EQUIPMENT USED ON THIS SURVEY IS KEPT ADJUSTED AND STANDARDIZED. WE USED A SOKKIA SET 2,3 OR 4 TOTAL STATION AND LEAP FROGGED A COMPLETE SET UP AT EACH TRAVERSE STATION OR CONTROLLING CORNER.

LOST OR OBLITERATED CORNERS WERE REESTABLISHED IN ACCORDANCE WITH THE B-L-M MANUAL, A COMPLETE DESCRIPTION OF THE CORNERS FOUND, SET OR REESTABLISHED CAN BE FOUND ON PAGE 4 & 5 OF THIS RECORD OF SURVEY. THE FIELD NOTES FOR THIS SURVEY ARE CONTAINED IN BOOK 1, PAGES 1 - 118 TITLED: GRAVEL FLAT CADASTRAL SURVEY.

SURVEYORS CERTIFICATE

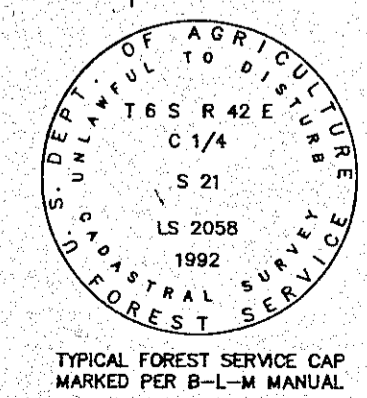
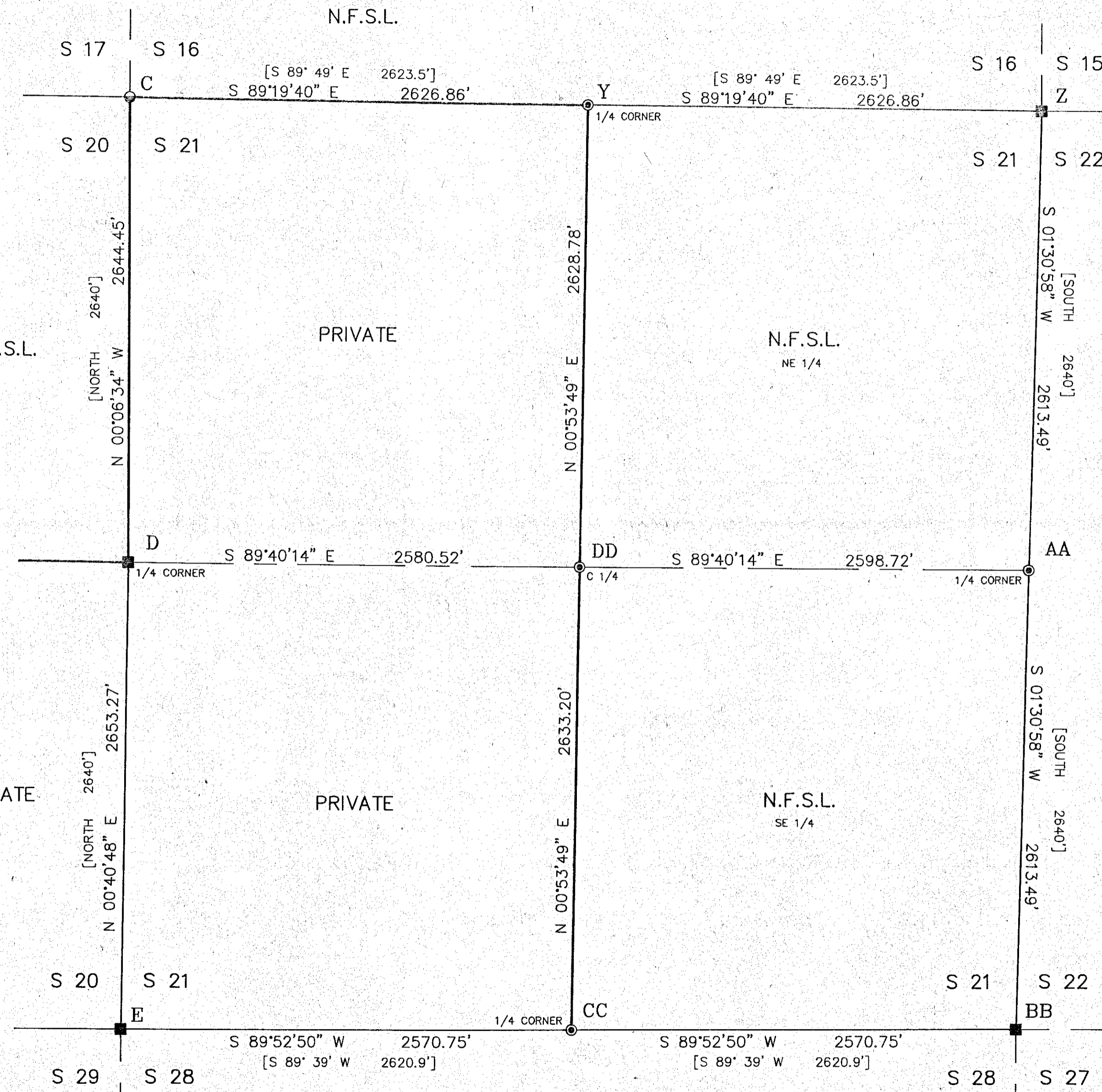
THIS PLAT CORRECTLY REPRESENTS A SURVEY MADE BY ME OR UNDER MY DIRECTION IN CONFORMANCE WITH THE STATUTES OF OREGON AND AT THE REQUEST OF THE FOREST SUPERVISOR, WALLOWA-WHITMAN NATIONAL FOREST, DURING THE MONTH OF APRIL, 1992.

REGISTERED
PROFESSIONAL
LAND SURVEYOR

Ronald E. Stoll
OREGON
JULY 15, 1983
RONALD E. STOLL
2058

JOB NO. 1210-691-OR
CONTRACT NO. 53-04M3-1-0113
SHEET 3 OF 5

RONALD E. STOLL, R.L.S. 2058



TYPICAL FOREST SERVICE CAP MARKED PER B-L-M MANUAL

A PORTION OF
SECTIONS 20 AND 21
T 6 S R 42 E W.M.
BAKER COUNTY, OREGON

RECORD OF SURVEY

RES LAND SURVEYS, INC. 8335 N. PLACITA, DADIVOSO TUCSON, ARIZONA 85704

FILED May 26, 1993
BAKER COUNTY SURVEYOR
SURVEY NO. 6-42-2 (5 sheets)