

BASIS OF BEARING

Geodetic North at the corner common to Sections 7, 8, 17 and 18, Township 6 South, Range 38 East of the Willamette Meridian, as determined by GPS observation

SCALE: 1" = 500'

LEGEND

- ⊙ Found 2 1/2" iron pipe with 2 1/2" brass cap, marked as per Baker County monumentation records
- ⊙ Found 2 1/2" iron pipe with 2 1/2" brass cap, marked as per Baker County monumentation records, set by Survey Number 06-38-0001
- Found 5/8" iron pin with 2 1/2" aluminum cap, marked as per Baker County Monumentation Records, set by survey for Hancock Forest Management, dated Nov. 2017
- ⊙ Set 2 1/2" x 30" aluminum pipe with 3" aluminum cap, marked as per Baker County Monumentation records, filed separately
- Set 5/8" x 30" iron pin with 2 1/2" aluminum cap, marked as per Baker County Monumentation records, filed separately
- Steel fencepost set on line
- × Fenceline
- () Record measurement as per GLO contract number 388, dated May 7, 1881, executed by W. B. Barr

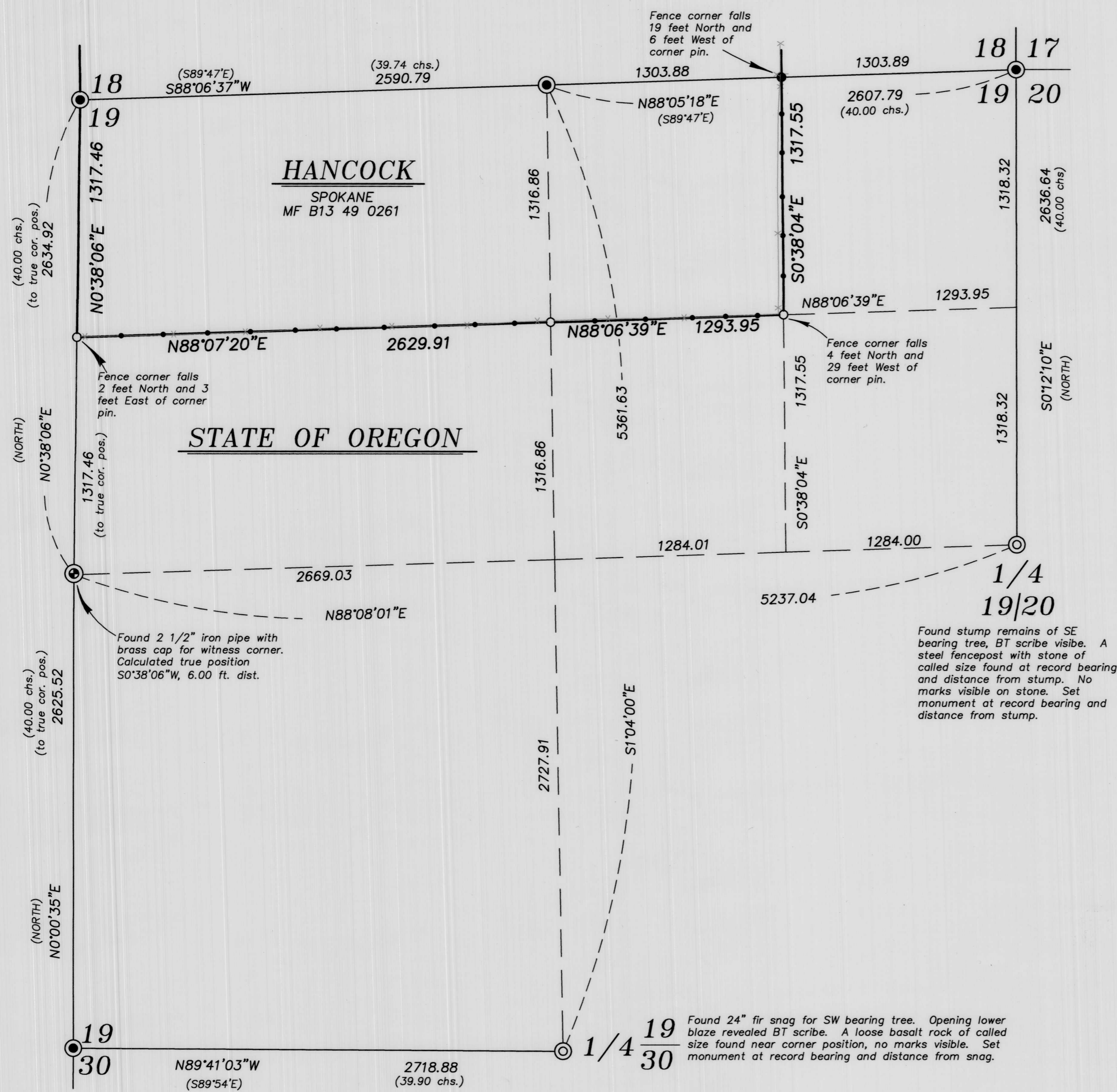
REFERENCE MATERIAL

Baker County Survey Number 06-38-0001
Baker County Survey Number 06-38-0014

Field notes of GLO contract Number 388, dated May 7, 1881, executed by W.B. Barr

DEED REFERENCES

Microfilm Document Number B12 39 0261



NARRATIVE

This survey was done at the request of Patrick Marolla on behalf of Hancock Forest Management, land manager of the lands within. Mr. Marolla wanted lines within Section 19 monumented and posted prior to a timber harvest. I recover the monuments set by Survey Number 06-38-0001. I find the monuments harmonious with record measurements and accept them in place. I place the West and South quarter corners from found bearing trees. Subdivision of the section is as per BLM Manual of Instructions 2009. I find no unusual conditions with this survey.

REGISTERED
PROFESSIONAL
LAND SURVEYOR

J. S. H.

OREGON
JUNE 2, 2010
JEFFREY S. HSU
83571

Renewal Date: June 30, 2019

FILED DEC. 1, 2017
BAKER COUNTY SURVEYOR
SURVEY NO. 6-37-9
6-38-43

BAGETT, GRIFFITH & BLACKMAN 2006 Adams Avenue, LaGrande, Oregon Map of Survey	
Situate is Section 19, Township 6 South, Range 38 East of the Willamette Meridian	
UNION/BAKER COUNTIES	
SURVEYED FOR	Hancock Forest Management
SURVEYED BY	J. S. H.
Scale: 1" = 500'	Drawn by: J. S. H. Dec. 2017