

LEGEND

- FOUND ORIGINAL CORNER EVIDENCE AND SET MONUMENT AS DESCRIBED ON U.S.F.S. FORM KO-1100-57.
- SET MONUMENT AS DESCRIBED ON U.S.F.S. FORM KO-1100-57 BY SURVEYOR
- ▲ CORNER SET BY HANLEY ENGINEERING, MARCH 30, 1981
- ◆ CORNER RESET IN APRIL, 1981
- [] METERS
- () RECORD DATA FROM ORIGINAL SURVEY
- (5) SECTION NUMBERS

BASIS OF BEARING

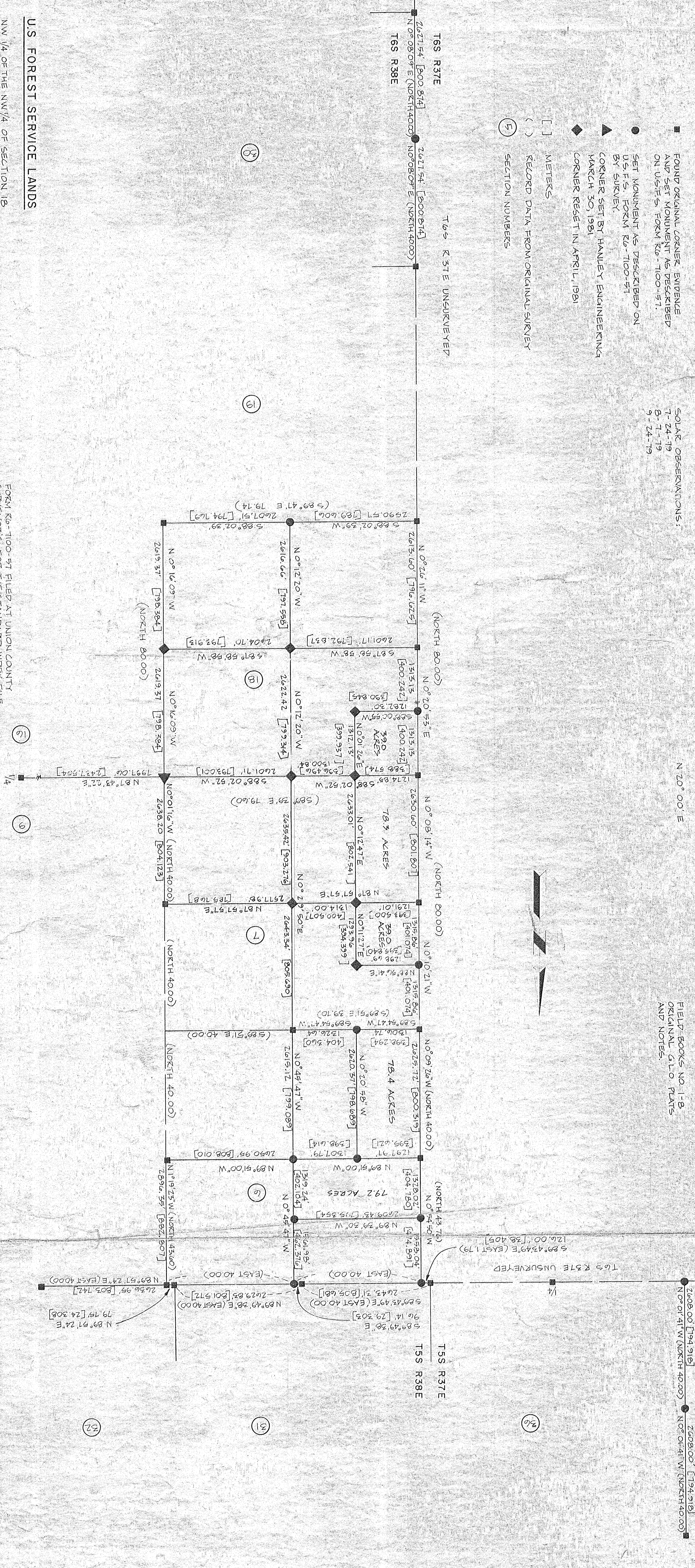
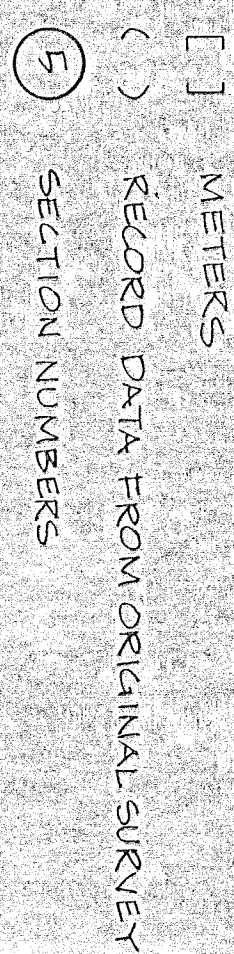
- SOLAR OBSERVATIONS: 7-24-79, 8-7-79, 9-24-79

MEAN MAGNETIC DECLINATION

N 20° 00' E

REFERENCE MATERIAL

FIELD BOOKS NO. 1-B AND NOTES.



U.S. FOREST SERVICE LANDS

NW 1/4 OF THE NW 1/4 OF SECTION 18
 SW 1/4 OF THE NW 1/4, W 1/2 OF THE SW 1/4 OF SECTION 7
 S 1/2 OF THE NW 1/4, W 1/2 OF THE SW 1/4 OF SECTION 6

FORM KO-1100-57 FILED AT UNION COUNTY SURVEYOR'S FOR THE STANDARD INDEX FILE NUMBER: 155, R 338E, T 25, X-21, Z-21, Z-25, AND Z-25, T 25, R 338E, Z-3, Z-5, Z-7, AND Z-9, T 65, R 338E, A-1, A-5, A-5, B-1, B-5, C-1, C-2, C-3, C-5, E-1, E-2, E-3, F-1, F-2, G-1, G-2, G-3, G-5, J-1, J-2, J-3, J-5, J-11, K-1 AND L-5.

FORM KO-1100-57 FILED AT BAKER COUNTY SURVEYOR'S FOR THE STANDARD INDEX FILE NUMBER: T 65, R 338E, K-2, L-1, L-2, N-1, N-3, N-5, P-1, K-1, T-1, V-1 AND X-1.

NOTE: NEW RG-1100-57'S FILED AT UNION COUNTY SURVEYOR'S FOR THE STANDARD INDEX FILE NUMBER F-2, G-2, G-3, J-2, J-3, & L-5. MONUMENTS RESET IN APRIL, 1981.

NOTE: NEW RG-1100-57'S FILED AT BAKER COUNTY SURVEYOR'S FOR STANDARD INDEX FILE NUMBER K-2 & L-3 FOR MONUMENTS RESET IN APRIL, 1981.

I, BARRY B. BARBOUR, a registered land surveyor in the State of Oregon, hereby certify that this plat and the notes hereon, or attached, are a correct representation of a survey I performed during July - October, 1979, for the U.S. Forest Service, in accordance with the Statutes of the State of Oregon and with the Articles of the Contract.

Barry B. Barbour
 Barry B. Barbour
 Registered Land Surveyor
 Oregon License 1051

REVISED SURVEY MAP, APRIL, 1981
 HANLEY ENGINEERING HAD INFORMATION FOR AN UNRECORDED MONUMENT FOR CORNER TO SECTIONS 7, 8, 17 & 18. THEY REMONUMENTED THIS MONUMENT & I AGREED WITH THEIR POSITION. I RESET MY EFFECTED MONUMENTS & HAVE REVISED MY SURVEY

Barry B. Barbour
 Barry B. Barbour
 PLS. 1051
 APRIL 30, 1981

MAP OF SURVEY
 SECTIONS 18, 7, 6, T6S R38E
 UNION & BAKER COUNTIES, OREGON
 FOR: U.S. FOREST SERVICE

MADE BY: BARRY B. BARBOUR
 DATE: OCT 1979

SCALE: 1" = 1000'

FILED: June 22, 1981
 BAKER COUNTY SURVEYOR
 SURVEY NO. 6-38-1