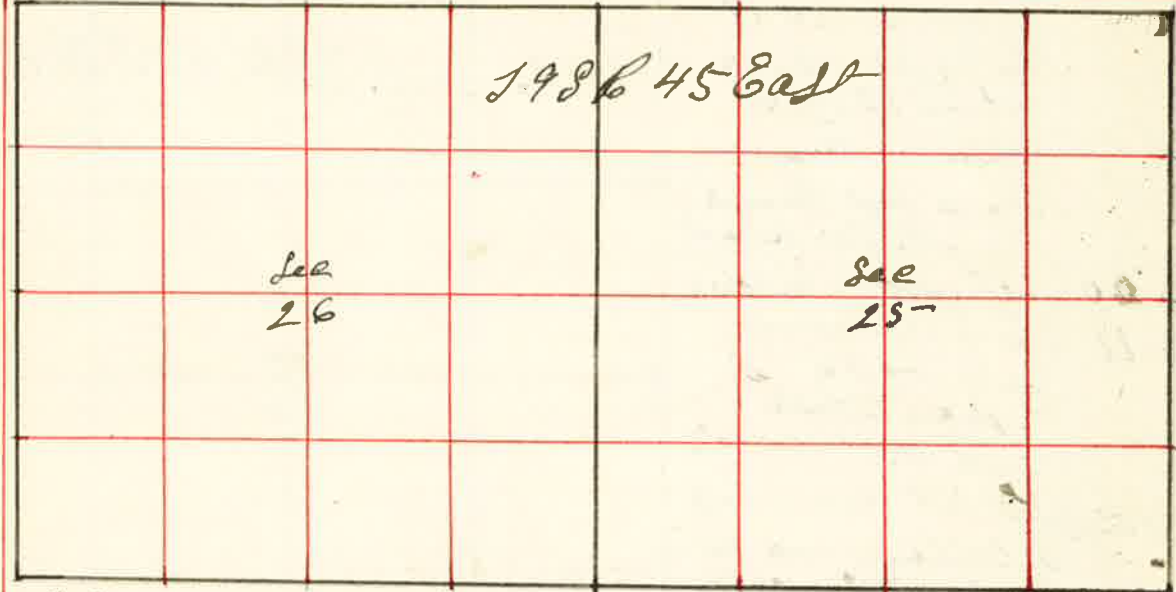


Surveyed for A. J. Neil Ben Longley Frazier & Augustus Nov 9 1889

By J. W. Kemble County Surveyor Plat No. 98.



I Commenced at the corner to Sec 24-23-25 & 26
Thence East var 20° E

- 20 00 Let temporary 1/8 corner
- 40 00 Temporary 1/4 sec corner
- 80 00 the corner to Sec 24=25=29 & 30 on Range line
bet Ranges 45, 46, E. T. S. from which
I run west

- 40 00 Let Post in mound bet Sec 24 & 25
- 60 00 Let Post marked 1/8 for 1/8 corner
- 80 00 the corner to Sec 28=24=25 & 26
Thence South var 20° E

- 20 00 Let temporary 1/8 corner
- 40 00 Let temporary 1/4 sec corner
- 77 40 Powder River 221 lks across course East
- 80 27 Intersect South Boundary 170 links west
of corner to Sec 25=26=35 & 36
from which
a cottonwood 18 inches bears S 68° W 48 lks
" 24 " " N 85° E 106 "
" 6 " " N 19° W 31 "
an alder 4 " " S 18° E 38 "
from which

Surveyed for A. J. Neil Ben Longley John Frazier & A. Augustus Nov 9 1889

- 100 I run North 1° 15' W on true line var 20° E
- 40 13 1/2 Let Stone 6 x 10 x 18 inches for 1/4 sec corner bet Sec 25 & 26
Powder River 220 lks across no East
- 60 20 Let Stake for 1/8 corner
- 80 27 the corner to Sec 23=24=25 & 26
the corner to Sec 25=26=35 & 36
Thence East var 20° 45' E

- 20 00 Let temporary 1/8 corner
- 40 00 Let temporary 1/4 sec corner in old bet of Powder River
- 79 00 Intersect East Boundary 28 lks South of corner to Sec 25=26=35 & 36
on Range line from which
I run west on true line S 89° 56' W var 20° E

- 39 50 Let Post in mound of Stone for 1/4 sec corner bet Sec 25 & 36 in old bet of Range
- 59 25 Let Post to 1/8 corner from which
a cottonwood 12 inches bears 2 1/2 W 302 lks
a willow 4 inches bears N 46° E 108 lks
- 79 00 the corner to Sec 25=26=35 & 36
the 1/4 sec corner bet Sec 25 & 36
Thence North var 20° E

- 400 Drough 100 lks wide Cause East
- 14 00 Powder River 408 lks across Cause S 15° E
- 20 00 Let temporary 1/8 corner to center of 1/2 sec 25-
- 36 25 Spring Branch 25 lks across Cause East
- 40 00 Let temporary 1/8 corner for center Sec 25-
- 60 00 Let temporary 1/8 corner in center N 1/2 Sec 25-
- 80 12 Intersect North Boundary 105 lks East of 1/4 sec corner
bet Sec 24 & 25 from which
I run South 45° E var 20° E

- 20 03 Let Post for 1/8 corner in center N 1/2 Sec 25-
- 40 06 Let " " 1/8 corner in center Sec 25-
- 60 09 Let Post for 1/8 corner in center of 1/2 Sec 25- from which
a cottonwood 3 inches bears South 6 links dist.
- 80 22 the 1/4 sec corner bet Sec 25 & 36
the 1/4 sec corner bet Sec 25 & 26
Thence East var 20° E

- 19 87 1/2 Let temporary 1/8 corner
- 39 75 Let temporary 1/8 corner in center Sec 25-
- 54 62 1/2 Let temporary 1/8 corner
- 77 75 Powder River 168 lks across Cause N 20° E
- 79 55 Intersect East Boundary 5 lks North of 1/4 sec corner

The $\frac{1}{4}$ Sec Corner bet Sec 28 & 26
 Thence West var $20^{\circ} E$

500 Second Steep Bluff 25 feet High Course South
 640 Slough runs South
 1900 East Bank of Eagle creek
 2000 Set temporary $\frac{1}{8}$ corner in old bed of Eagle
 2075 West Bank of Eagle creek
 3887 Intersect west boundary 84 lks South
 of corner to Sec 22 = 23 = 26 & 27
 from which I run East $89^{\circ} 30' E$ var $20^{\circ} E$

1948 Set Stake for $\frac{1}{8}$ corner
 3887 The $\frac{1}{4}$ Sec corner bet Sec 23 & 26
 The $\frac{1}{8}$ corner on North boundary N $W \frac{1}{4}$ Sec 26
 Thence South var $20^{\circ} E$

2223 the west bank of Eagle creek $S 25^{\circ} E$
 2000 Set temporary $\frac{1}{8}$ corner
 4012 Intersect 56 lks west of $\frac{1}{8}$ corner in $W \frac{1}{2}$ Sec 26
 from which I run North var $20^{\circ} E$ N $15^{\circ} W$

2006 Set Post in Slough for $\frac{1}{8}$ corner in center N $W \frac{1}{4}$ Sec 26 from which
 a Cottonwood 15 in dia N $71^{\circ} E$ 56 lks
 " 17 " " N $22^{\circ} E$ W 101 lks

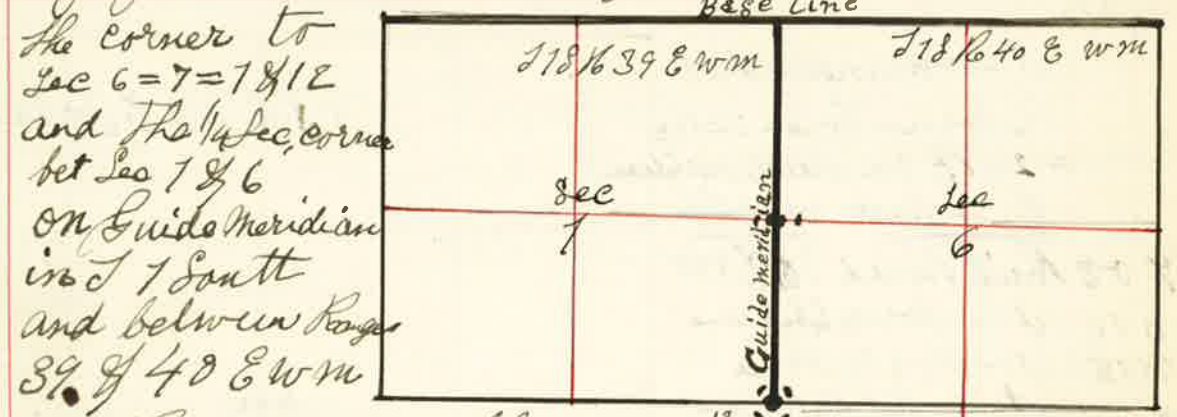
4012 the $\frac{1}{8}$ corner on North boundary N $W \frac{1}{4}$ Sec 26
 The $\frac{1}{8}$ corner in center $E \frac{1}{2}$ Sec 26
 Thence South var $20^{\circ} E$

2020 Set temporary $\frac{1}{8}$ corner boundary $S W \frac{1}{4}$ Sec 26
 4021 the $\frac{1}{8}$ corner on South from which
 I run North var $20^{\circ} E$

2010 Set Stone 6 x 8 x 16 inches to $\frac{1}{8}$ corner in center $E \frac{1}{2}$ Sec 26
 from which
 a Cottonwood 8 inches dia bears $S 11^{\circ} W$ 108 lks
 Nov. 14 1889
 J. W. Kimbrell County Surveyor

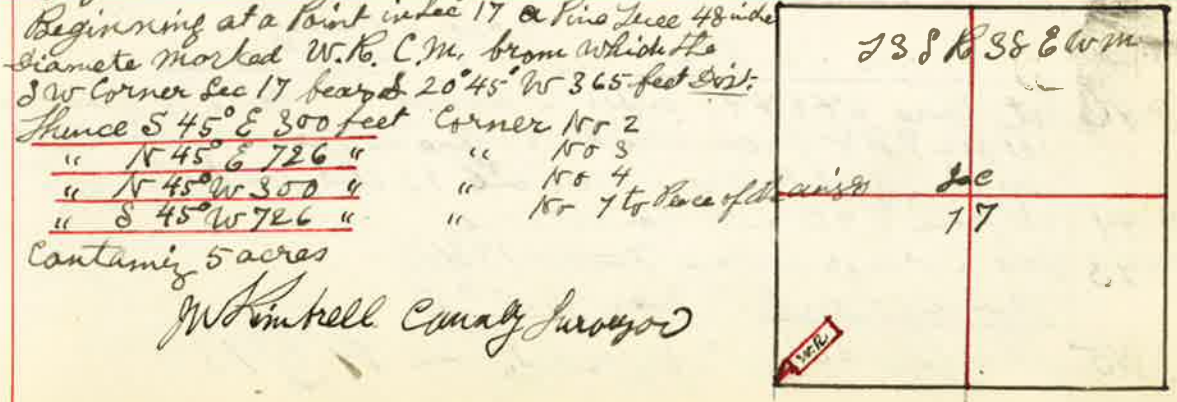
Surveyed for W. Bault Joel Weaver & S. Sturgis Nov 18 1889

By J. W. Kimbrell County Surveyor Plat No 99



I Reestablished the same as follows
 The corner to Sec 6 = 7 = 18 & 12 Post decayed and
 mound and pits obliterated I planted stone 6 x 8 x 18
 inches 18 inches in the ground from which
 a Pine 30 inches dia bears $S 20^{\circ} E$ 274 lks
 " 42 " " " $S 42^{\circ} W$ 427 "
 The $\frac{1}{4}$ Sec corner bet Sec 1 & 6
 Post decayed and bearing trees being cut down
 and destroyed U.S. Field Note are as follows
 $\frac{1}{4}$ Sec Post Corner bet Sec 1 & 6 from which
 a Pine 30 inches dia bears N $87^{\circ} W$ 149 lks dist -
 " 20 " " " " $S 25^{\circ} W$ 127 " "
 I therefore set Stone 8 x 8 x 22 inch from which
 a Pine 8 inches dia bears N $82^{\circ} E$ 247 lks dist -
 " 5 " " " " $S 7^{\circ} W$ 203 " "
 J. W. Kimbrell County Surveyor

Surveyed for Charles McConnell Nov. 20 1889
 By J. W. Kimbrell County Surveyor Plat No 100



Beginning at a Point in Sec 17 a Pine Tree 48 inch
 diameter marked W. K. C. M. from which the
 SW corner Sec 17 bears $S 20^{\circ} 45' W$ 365 feet dist:
 Thence $S 45^{\circ} E$ 300 feet corner No 2
 " N $45^{\circ} E$ 726 " " No 3
 " N $45^{\circ} W$ 350 " " No 4
 " $S 45^{\circ} W$ 726 " " No 7 to Pine of same size
 containing 5 acres
 J. W. Kimbrell County Surveyor