

Surveyed for O.M. Ramsey & A. Lunn Dec 26 1890  
by J.W. Kimbrell Surveyor Plat No 117

I commenced at the corner to Sec 21-22-27 & 28 T6S R39E W1M  
old Post and pits &c  
thence run south on random line  
bet Sec 27 & 28 var 20° E  
943 UP R/R N 88° 8' W  
10 37 Set Post for fractional corner  
15 04 Well race N 10° 6' E 22.5 lks across  
26 65 Slough runs East  
38 75 Slough set Post for line  
commencing at the 1/16 corner on south side SW 1/4 Sec 22

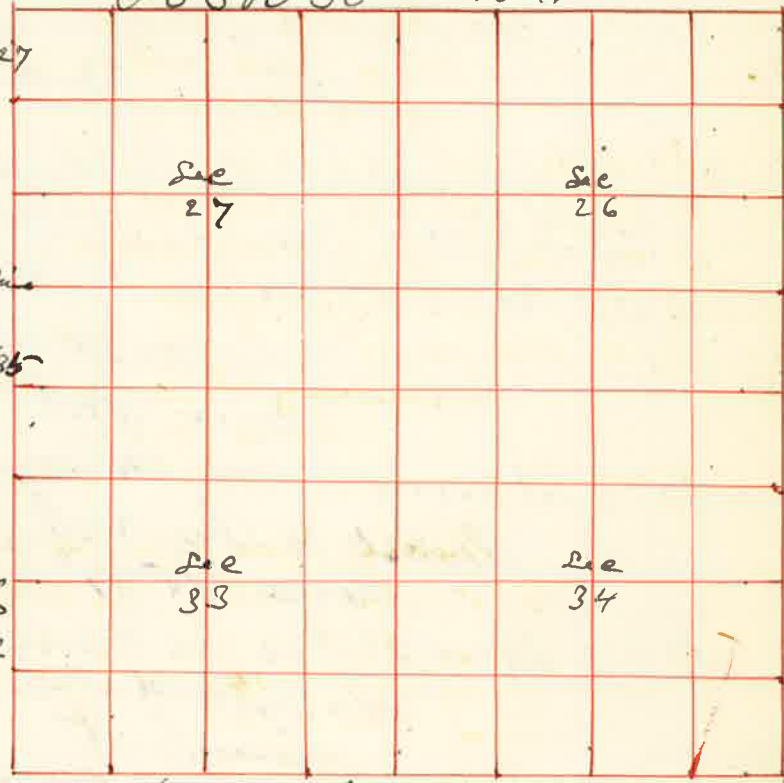


5 20 to up R/R Right-away course S 52° W N 52° E  
thence run commencing at a point  
505 lks south of the center of E 1/2 Sec 22  
thence S 52° W 420 lks  
thence N 32° W 143 " 1/2  
thence S 52° W 4425 " 13  
thence South 520 " 14  
thence East 3832 " 15  
thence North 625 " 16  
thence East 625 " 17  
thence North 2814 " to base of Beginning

J.W. Kimbrell  
Surveyor

Surveyed for W.L. Charles Lee Wickes & Jesse Bryant Dec 28 1890  
by J.W. Kimbrell US Dept Surveyor Plat No 118

I commenced at the corner  
to Sec 26-27-34 & 35 T5S R38E W1M.  
thence North bet Sec 26 & 27  
var 20° E  
20 00 Set temporary 1/16 corner  
38 88 Intersect 28 lks West  
of the 1/4 Sec corner bet  
Sec 26 & 27  
thence S 02° 4' W on line  
19 44 Set Post for 1/16 corner  
38 88 The corner to Sec 26-27-34 & 35  
The 1/4 Sec corner bet  
Sec 26 & 27  
thence North on  
random line bet  
Sec 26 & 27 var 20° E  
20 00 Set temporary 1/16 corner  
40 20 Intersect 156 lks  
East of the corner  
to Sec 22-23-26 & 27  
thence run S 2° 14' E on true line  
20 10 Set Post for 1/16 corner  
40 20 The corner 1/4 Sec corner bet Sec 26 & 27  
I then commenced at the corner to Sec 22-23-26 & 27  
thence West on random line bet Sec 22 & 23  
var 20° E  
20 00 Set temporary 1/16 corner  
40 05 Intersect the 1/4 Sec corner bet Sec 22 & 27  
East on line var same  
20 02 1/2 Set Post for 1/16 corner  
40 05 The corner to Sec 22-23-26 & 27  
I commenced at the 1/4 Sec corner bet Sec 22 & 27  
thence run south on random line  
through center Sec 22 var 20° E  
20 00 Set temporary 1/16 corner  
40 00 Set temporary 1/16 corner  
60 50 Set temporary 1/16 corner  
80 54 Intersect 252 lks East of the 1/4 Sec corner bet Sec 27 & 33  
the course of this line would therefore N 1° 48' E or S 1° 48' W



Surveyed for O.M. Ramsey & A. Lunn Dec 26 1890  
by J.W. Kimbrell Surveyor Plat No 117

I commenced at the corner to Sec 21-22-27 & 28 T 6 S R 39 E W 1/4  
old Post and pits &c  
thence run south on random line  
bet Sec 27 & 28 var 20° E  
943 UP R/R N 88° 8' W  
10 37 Set Post for fractional corner  
15 04 Well race N 10° 6' E 2.5 lks across  
26 65 Slough runs East  
38 75 Slough set Post for line  
commencing at the 1/16 corner on south side SW 1/4 Sec 22



5 20 to up R/R Right-away course S 52° W N 52° E  
thence run commencing at a point  
505 lks south of the center of E 1/2 Sec 22  
thence S 52° W 420 lks  
thence N 32° W 143 " 1/2  
thence S 52° W 4425 " 1/3  
thence South 520 " 1/4  
thence East 3832 " 1/5  
thence North 625 " 1/6  
thence East 625 " 1/7  
thence North 2814 " to base of beginning

J.W. Kimbrell  
Surveyor

Surveyed for W.L. Charles Lee Wickes & Jesse Bryant Dec 28 1890  
by J.W. Kimbrell US Dept Surveyor Plat No 118

I commenced at the corner to Sec 26-27-34 & 35 T 5 S R 38 E W. 1/4  
thence North bet Sec 26 & 27  
Var 20° E  
20 00 Set temporary 1/16 corner  
38 88 Intersect 28 lks West  
of the 1/4 Sec corner bet  
Sec 26 & 27  
thence South 3024' on random line  
19 44 Set Post for 1/16 corner  
38 88 The corner to Sec 26-27-34 & 35  
The 1/4 Sec corner bet  
Sec 26 & 27  
thence North on  
random line bet  
Sec 26 & 27 var 20° E  
20 00 Set temporary 1/16 corner  
40 20 Intersect 156 lks  
East of the corner  
to Sec 22-23-26 & 27  
thence run S 2° 14' E on true line  
20 10 Set Post for 1/16 corner  
40 20 The corner 1/4 Sec corner bet Sec 26 & 27  
I then commenced at the corner to Sec 22-23-26 & 27  
thence West on random line bet Sec 22 & 23  
Var 20° E  
20 00 Set temporary 1/16 corner  
40 05 Intersect the 1/4 Sec corner bet Sec 22 & 27  
East on true line var same  
20 02 1/2 Set Post for 1/16 corner  
40 05 The corner to Sec 22-23-26 & 27  
I commenced at the 1/4 Sec corner bet Sec 22 & 27  
thence run south on random line  
through center Sec 22 var 20° E  
20 00 Set temporary 1/16 corner  
40 00 Set temporary 1/16 corner  
60 50 Set temporary 1/16 corner  
80 54 Intersect 252 lks East of the 1/4 Sec corner bet Sec 27 & 33  
the course of this line would therefore N 1° 48' E or S 1° 48' W

