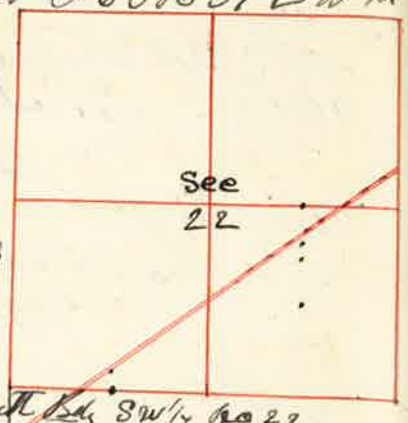


Surveyed for O.M. Ramsey & A. Lunn Dec 26 1890
by J.W. Kimbrell Principal Surveyor Plat No 117

I commenced at the corner to Sec 21-22-27 & 28 T 6 S R 39 E W 1/4
old Post and pits 1/2 c
thence run south on random line
bet Sec 27 & 28 var 20° E
943 UP 1/2 c N 88° 30' W
10 37 Set Post for fractional corner
15 04 Well race N 10° E 2.5 lks across
26 65 Slough runs East
38 75 Slough set Post for line
commencing at the 1/16 corner on south side SW 1/4 Sec 22



5 20 to up R.R. Right-away course S 52° W N 52° E
thence run commencing at a point
505 lks south of the center of E 1/2 Sec 22
thence S 52° W 420 lks 11
thence N 32° W 143 " 12
thence S 52° W 4425 " 13
thence South 520 " 14
thence East 3832 " 15
thence North 625 " 16
thence East 625 " 17
thence North 2814 " to base of beginning

J.W. Kimbrell
Surveyor

Surveyed for W.L. Charles Lee Wickes & Jesse Bryant Dec 28 1890
by J.W. Kimbrell US Dept Surveyor Plat No 118

I commenced at the corner
to Sec 26-27-34 & 35 T 5 S R 38 E W. 1/4
thence North bet Sec 26 & 27
var 20° E
20 00 Set temporary 1/16 corner
38 88 Intersect 28 lks West
of the 1/4 Sec corner bet
Sec 26 & 27
thence S 02° 4' W on line
19 44 Set Post for 1/16 corner
38 88 The corner to Sec 26-27-34 & 35
The 1/4 Sec corner bet
Sec 26 & 27
thence North on
random line bet
Sec 26 & 27 var 20° E
20 00 Set temporary 1/16 corner
40 20 Intersect 156 lks
East of the corner
to Sec 22-23-26 & 27
thence run S 2° 14' E on true line
20 10 Set Post for 1/16 corner
40 20 The corner 1/4 Sec corner bet Sec 26 & 27
I then commenced at the corner to Sec 22-23-26 & 27
thence West on random line bet Sec 22 & 23
var 20° E
20 00 Set temporary 1/16 corner
40 05 Intersect the 1/4 Sec corner bet Sec 22 & 27
East on line var same
20 02 1/2 Set Post for 1/16 corner
40 05 The corner to Sec 22-23-26 & 27
I commenced at the 1/4 Sec corner bet Sec 22 & 27
thence run south on random line
through center Sec 22 var 20° E
20 00 Set temporary 1/16 corner
40 00 Set temporary 1/16 corner
60 50 Set temporary 1/16 corner
80 54 Intersect 2.52 lks East of the 1/4 Sec corner bet Sec 27 & 33
the course of this line would therefore N 1° 48' E or S 1° 48' W

