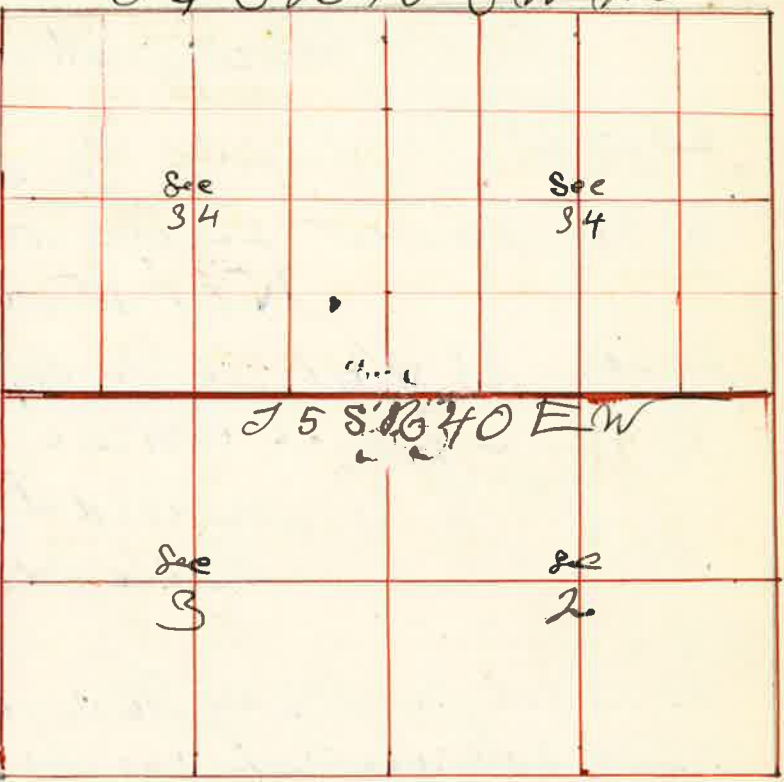


20 50 Set temporary 1/16 corner
 37 50 Thence South & East supposed by letters to
 be the original corner to Sec 11-12-13 & 14
 I extend my line East and at
 40 50 the 1/4 Sec corner set Dec 12 & 13
 I therefore run West and at
 40 00 set stake for the corner to Sec 11-12-13 & 14
 Thence West bet Dec 11 & 14
 and at
 18 75 set post for 1/16 corner
 37 50 the 1/4 Sec corner set Dec 11 & 14
 John W. Kimbell County Surveyor

Surveyed for Ed Bemilard May the 3rd 1890
 by J.W. Kimbell County Surveyor Plat No 109

J 4 S 16 40 S W M
 I commenced at the corner to Sec 8 2-3-34 & 35 on
 the line bet 14 & 15
 & 16 40 E
 thence East bet Dec 28 & 35 Var 20° 45' E
 20 50 Set temporary 1/16 corner
 40 35 the 1/4 Sec corner bet Dec 28 & 35
 50 35 top of rocky cliff
 50 50 descend
 58 50 top of Hill
 80 35 the corner to Sec 1-2-35 & 36



I commenced at the 1/4 Sec corner bet Dec 28 & 35
 Thence North through center Sec 35
 Var 20° 15' E

20 50 Set temporary 1/16 corner for center Sec 35
 40 50 Set temporary 1/16 corner for center Sec 35
 60 50 Set temporary 1/16 corner for center N 1/2 Sec 35
 80 10 Intersect 8 lks west of the 1/4 Sec corner
 bet Sec 26 & 35

I commenced at the corner to Sec 26-27-34 & 35
 Thence South bet Dec 34 & 35
 Var 19° E

20 50 Set temporary 1/16 corner
 39 68 Intersect 12 lks west of the 1/4 Sec bet Dec 34 & 35
 Thence No 11 W on line line
 19 84 set post in mid of stone for 1/16 corner
 39 68 the Sec cor

I commenced at the 1/4 Sec corner bet Sec 34 & 35.
Thence south bet Sec 34 & 35
Var 19° E

20 00 set temporary 1/16 corner

40 45 intersect 22 lbs west of the corner to Sec 2-3-34 & 35.
N 09' W on true line

20 20 1/2 set post for 1/16 corner on W bdy S W 1/4 Sec 35

40 45 the 1/4 Sec corner

I commenced at the corner Sec 2-3-34 & 35.
Thence west bet Sec 34 & 35
Var 20° 15' E

20 00 set temporary 1/16 corner

22 88 Catherine creek 540 lbs across runs N 75° W

35 45 a stone marked by lying on the ground which
I believe from all indications as regards
to its position and Government field notes
has been moved from its original position
hence I extend my line west and at
79 67 intersect 26 lbs North of the corner
to Sec 3-4-33 & 34
N 89° 49' W on true line

39 83 reset stone for the 1/4 Sec corner bet Sec 34 & 35

59 75 set post for 1/16 corner

79 67 the corner to Sec 2-3-34 & 35
I commenced at the 1/4 Sec corner on S. bdy Sec 34
Thence North through center Sec 34
Var 19° E

521 Descend very steep bluff
19 49 Catherine creek runs N.W.
20 00 set temporary 1/16 corner for center S 1/2 Sec 34
21 91 County Road course N W 1/4 S E
40 00 could find no 1/4 Sec corner set temporary 1/4 Sec

Commenced at the 1/16 corner in center
S 1/2 Sec 34
Thence East through center S 1/4 Sec 34
Var 19° E

20 00 set temporary 1/16 corner for center S 1/2
39 02 I believe at 20 lbs west of the 1/16 corner
N 89° 42' W on true line
19 51 set post for 1/16 corner in center S 1/4 Sec 34

John W. Kimball
County Surveyor