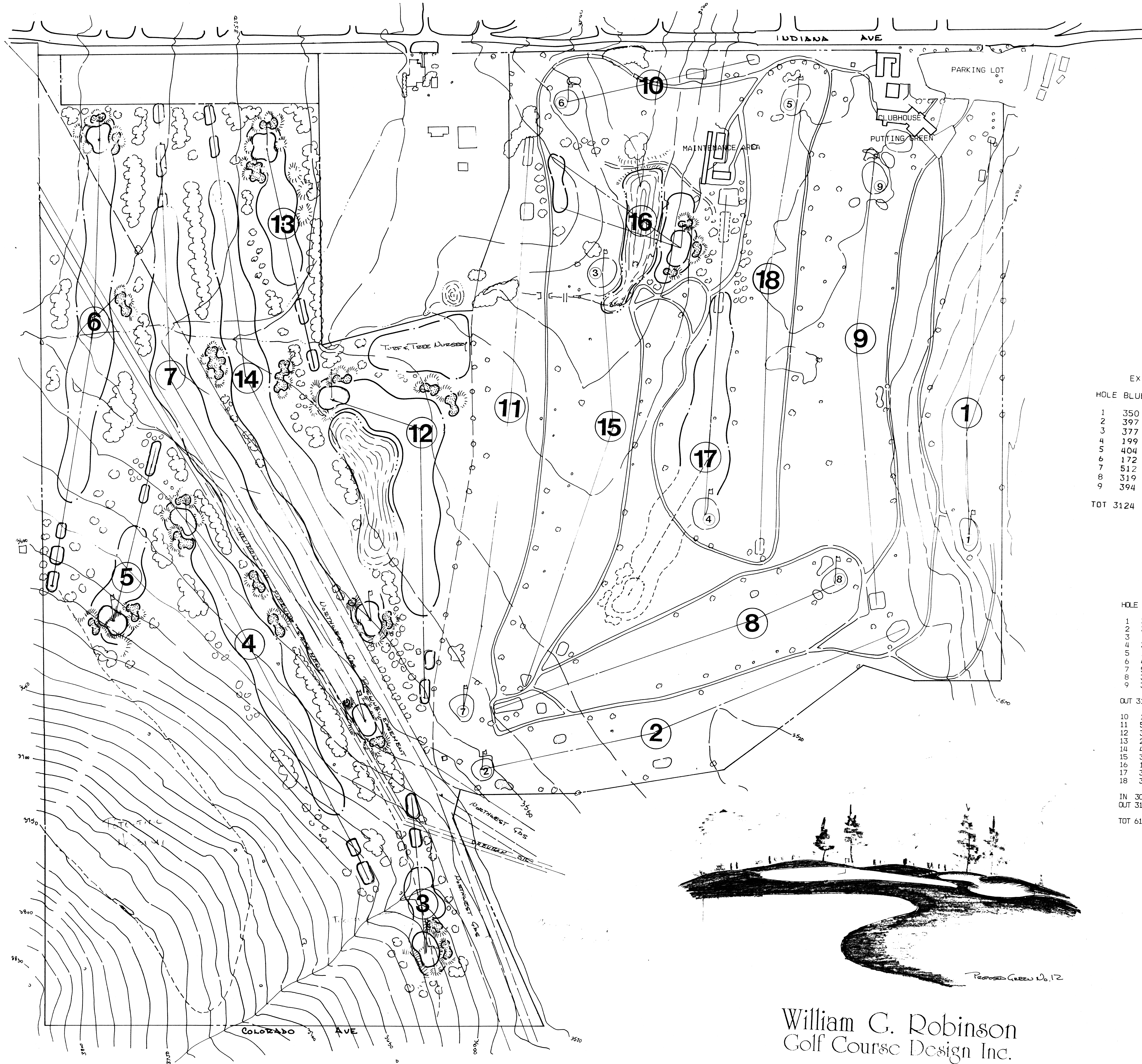


# BAKER GOLF COURSE

2801 INDIANA AV.  
BAKER CITY, OR 97814

FINAL ROUTING PLAN

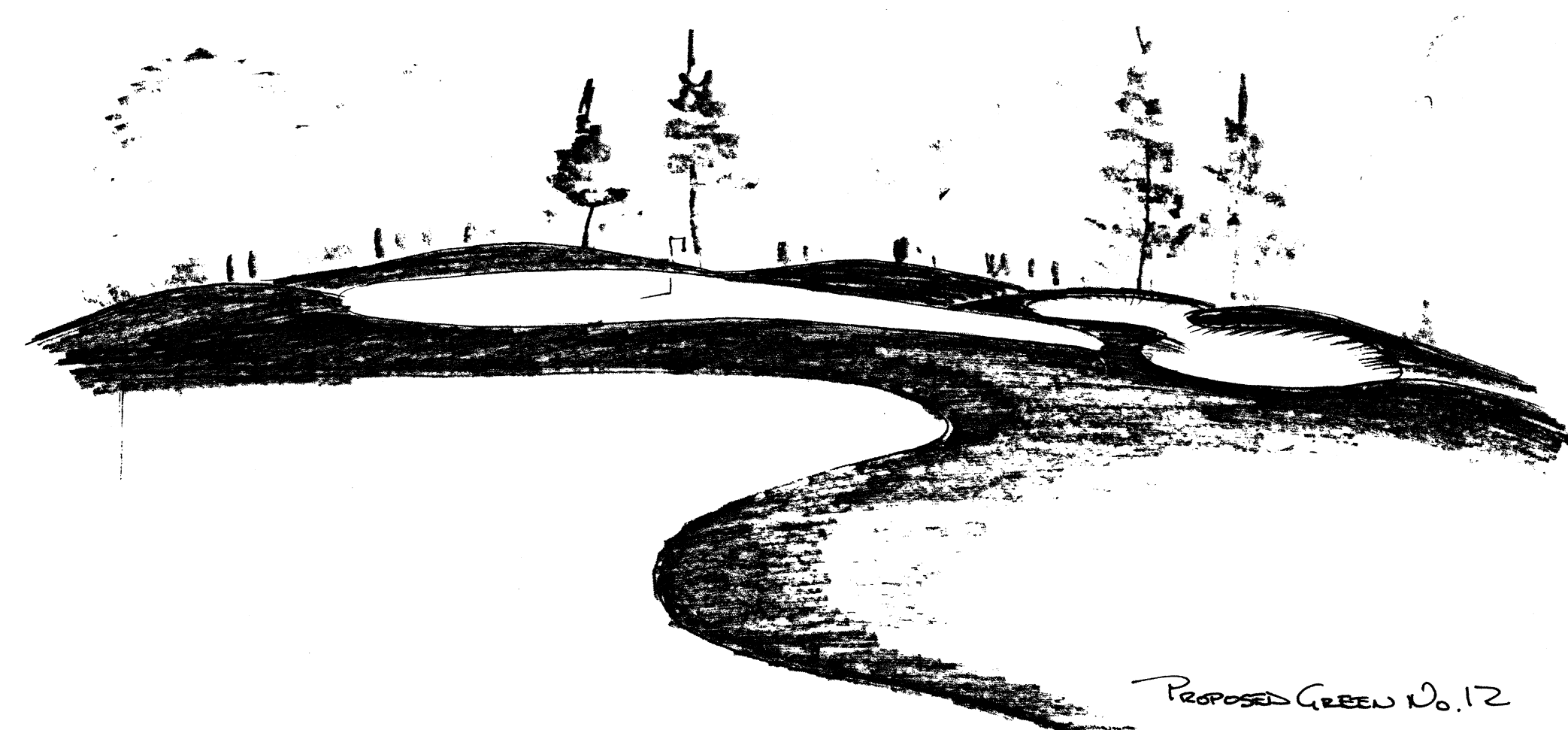


EXISTING CARD

| HOLE | BLUE | WHITE | RED  | PAR  |
|------|------|-------|------|------|
| 1    | 350  | 341   | 339  | 4    |
| 2    | 397  | 387   | 376  | 4/5  |
| 3    | 377  | 377   | 342  | 4    |
| 4    | 199  | 183   | 183  | 3    |
| 5    | 404  | 385   | 372  | 4    |
| 6    | 172  | 154   | 144  | 3    |
| 7    | 512  | 483   | 450  | 5    |
| 8    | 319  | 312   | 284  | 4    |
| 9    | 394  | 384   | 375  | 4    |
| TOT  | 3124 | 3006  | 2865 | 35/6 |

PROPOSED CARD

| HOLE | BLUE | WHITE | RED  | PAR |
|------|------|-------|------|-----|
| 1    | 350  | 341   | 339  | 4   |
| 2    | 397  | 387   | 376  | 4   |
| 3    | 140  | 130   | 110  | 3   |
| 4    | 360  | 340   | 320  | 4   |
| 5    | 165  | 140   | 120  | 3   |
| 6    | 400  | 380   | 350  | 4   |
| 7    | 590  | 540   | 500  | 5   |
| 8    | 319  | 312   | 284  | 4   |
| 9    | 394  | 384   | 375  | 4   |
| OUT  | 3115 | 2954  | 2774 | 35  |
| 10   | 172  | 154   | 144  | 3   |
| 11   | 512  | 483   | 450  | 5   |
| 12   | 330  | 310   | 290  | 4   |
| 13   | 200  | 160   | 140  | 3   |
| 14   | 485  | 475   | 440  | 5   |
| 15   | 377  | 377   | 342  | 4   |
| 16   | 150  | 130   | 110  | 3   |
| 17   | 380  | 360   | 340  | 4   |
| 18   | 394  | 384   | 375  | 4   |
| IN   | 3000 | 2833  | 2631 | 35  |
| OUT  | 3115 | 2954  | 2774 | 35  |
| TOT  | 6115 | 5787  | 5405 | 70  |



William C. Robinson  
Golf Course Design Inc.

P.O. BOX 2709, FLORENCE, OREGON 97430  
TEL: 503-997-9479  
MEMBER • AMERICAN SOCIETY OF GOLF COURSE ARCHITECTS