

APPROVALS

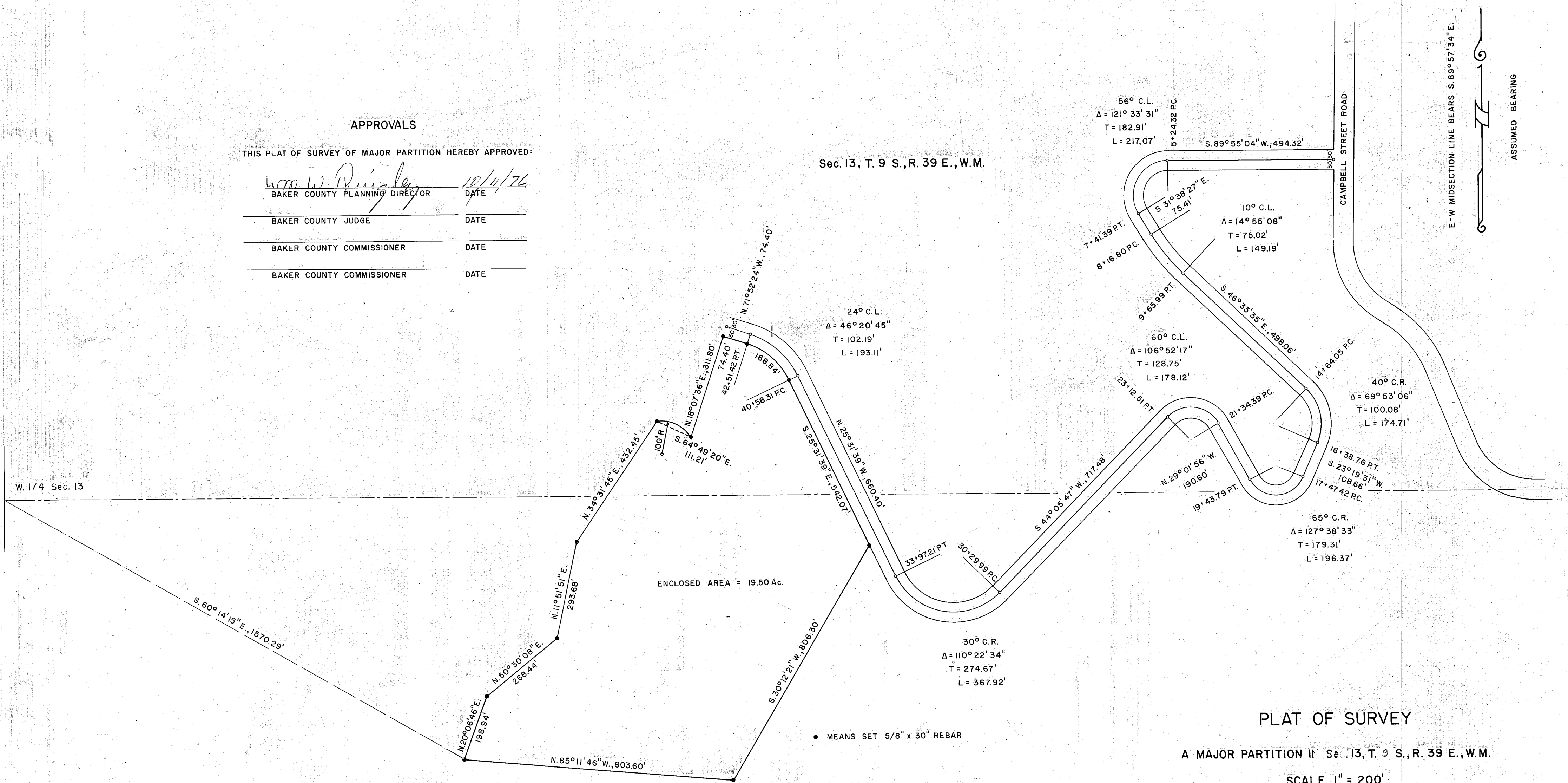
THIS PLAT OF SURVEY OF MAJOR PARTITION HEREBY APPROVED:

<i>Wm. W. Dingley</i>	10/11/76
BAKER COUNTY PLANNING DIRECTOR	DATE
BAKER COUNTY JUDGE	DATE
BAKER COUNTY COMMISSIONER	DATE
BAKER COUNTY COMMISSIONER	DATE

Sec. 13, T. 9 S., R. 39 E., W.M.

W. 1/4 Sec. 13

ENCLOSED AREA = 19.50 Ac.



56° C.L.
 $\Delta = 121^\circ 33' 31''$
 $T = 182.91'$
 $L = 217.07'$

24° C.L.
 $\Delta = 46^\circ 20' 45''$
 $T = 102.19'$
 $L = 193.11'$

60° C.L.
 $\Delta = 106^\circ 52' 17''$
 $T = 128.75'$
 $L = 178.12'$

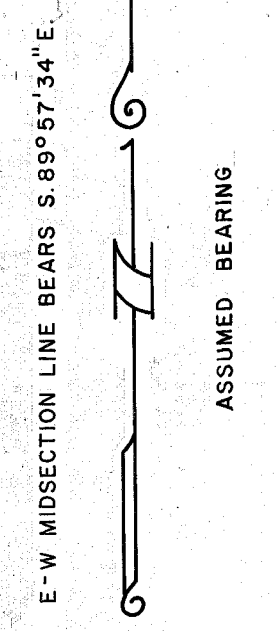
10° C.L.
 $\Delta = 14^\circ 55' 08''$
 $T = 75.02'$
 $L = 149.19'$

40° C.R.
 $\Delta = 69^\circ 53' 06''$
 $T = 100.08'$
 $L = 174.71'$

65° C.R.
 $\Delta = 127^\circ 38' 33''$
 $T = 179.31'$
 $L = 196.37'$

30° C.R.
 $\Delta = 110^\circ 22' 34''$
 $T = 274.67'$
 $L = 367.92'$

• MEANS SET 5/8" x 30" REBAR



ASSUMED BEARING

PLAT OF SURVEY

A MAJOR PARTITION OF Sec. 13, T. 9 S., R. 39 E., W.M.

SCALE 1" = 200'

SURVEYED SEPT. 9 - 11, 1976

DRAWN OCT. 8, 1976

FOR WARNOCK RANCHES, INC.

