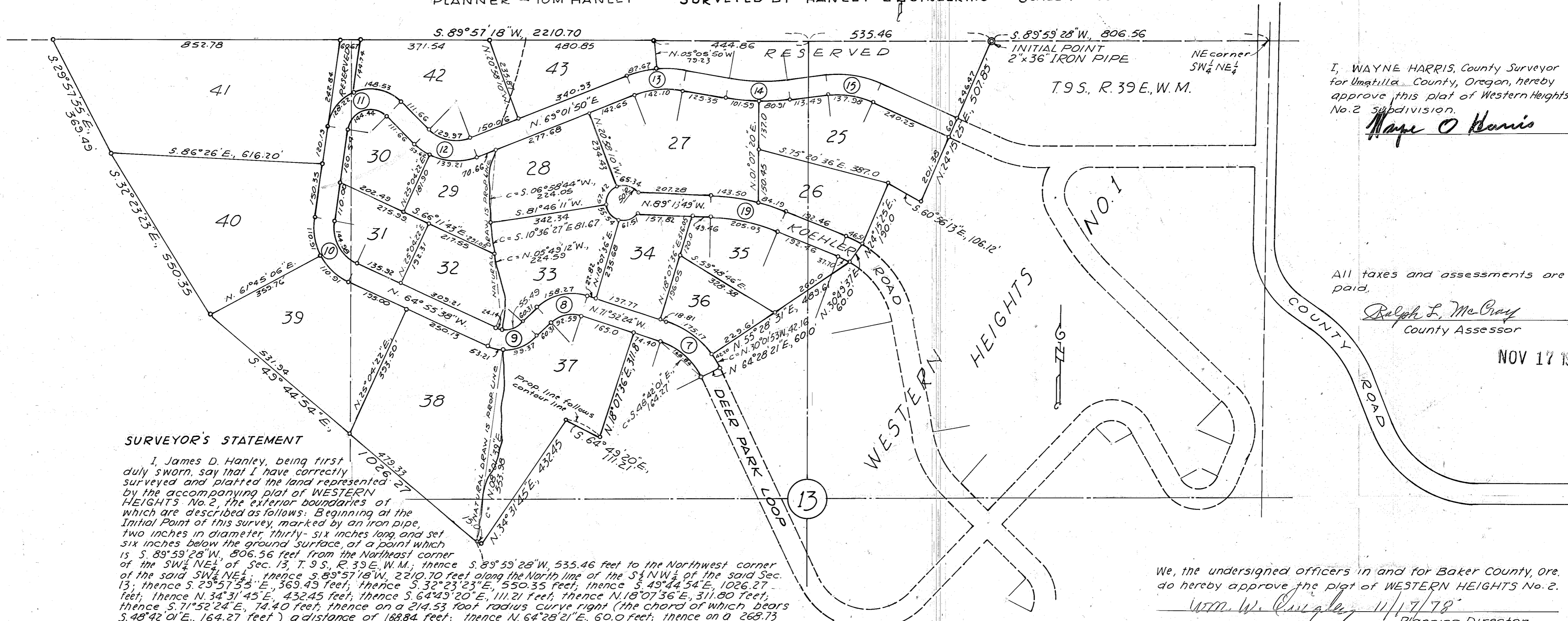


WESTERN HEIGHTS NO. 2

DEED 78 49 012

PLANNER - TOM HANLEY SURVEYED BY HANLEY ENGINEERING SCALE 1"=200'



I, WAYNE HARRIS, County Surveyor for Umatilla County, Oregon, hereby approve this plat of Western Heights No. 2 subdivision.

Wayne O Harris

All taxes and assessments are paid.

Ralph L. McCray
County Assessor

NOV 17 1978

SURVEYOR'S STATEMENT

I, James D. Hanley, being first duly sworn, say that I have correctly surveyed and platted the land represented by the accompanying plat of WESTERN HEIGHTS No. 2, the exterior boundaries of which are described as follows: Beginning at the Initial Point of this survey, marked by an iron pipe, two inches in diameter, thirty-six inches long and set six inches below the ground surface, at a point which is S. 89° 59' 28" W., 806.56 feet from the Northeast corner of the SW 1/4 NE 1/4 of Sec. 13, T. 9 S., R. 39 E., W. M.; thence S. 89° 57' 18" W., 2210.70 feet to the Northwest corner of the said SW 1/4 NE 1/4; thence S. 89° 59' 28" W., 535.46 feet to the Northwest corner of the said SW 1/4 NE 1/4; thence S. 29° 57' 53" E., 369.49 feet; thence S. 32° 23' 23" E., 550.35 feet; thence S. 49° 44' 54" E., 1026.27 feet; thence N. 34° 31' 45" E., 432.45 feet; thence S. 64° 49' 20" E., 111.21 feet; thence N. 18° 07' 36" E., 311.80 feet; thence S. 71° 52' 24" E., 74.40 feet; thence on a 214.53 foot radius curve right (the chord of which bears S. 48° 42' 01" E., 164.27 feet) a distance of 168.84 feet; thence N. 64° 28' 21" E., 60.0 feet; thence on a 268.73 foot radius curve left (the chord of which bears N. 30° 01' 53" W., 42.16 feet) a distance of 42.20 feet; thence N. 55° 28' 31" E., 489.61 feet; thence N. 30° 49' 37" E., 60.0 feet; thence N. 24° 15' 25" E., 130.0 feet; thence S. 60° 56' 13" E., 106.12 feet; thence N. 24° 15' 25" E., 507.85 feet to the point of beginning.

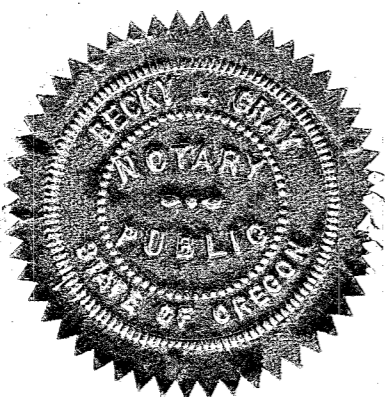
Subscribed and sworn before me this 27th day of October, 1978.

Patricia M. Foster, Notary Public for Oregon.
My commission expires April 14, 1982.



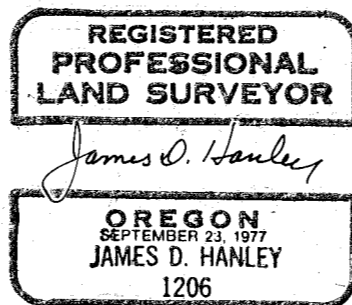
KNOW ALL MEN BY THESE PRESENTS: That Warnock Ranches, Inc., an Oregon corporation, the owner and claimant of the tract herein described, does hereby declare and acknowledge through its secretary that the accompanying annexed map is the authorized plat of WESTERN HEIGHTS No. 2 subdivision.

Wan Warnock
Secretary-treasurer, Warnock Ranches, Inc.



STATE OF OREGON } ss
COUNTY OF BAKER }
BE IT REMEMBERED, that on November 16, 1978, before me did personally appear the within named Dan Warnock, Jr. and acknowledged to me that he executed the same freely and voluntarily.

Becky L. Gray
Notary Public for Oregon
My commission expires April 4, 1981



We, the undersigned officers in and for Baker County, Ore. do hereby approve the plat of WESTERN HEIGHTS No. 2.

Wm. W. Coughlin 11/17/78
Planning Director
Donald S. Fuller
County Judge
George V. Dickerson
County Commissioner
Fred W. Ringold
County Commissioner

ROAD CENTERLINE CURVE AND TANGENT DATA:

⑦ N. 71° 52' 24" W. 24° C.L. Δ 46° 20' 45" T 102.19 L 193.11 P.C. 40+58.31 P.T. 42+51.42	⑧ S. 45° 24' 44" W. 50° C.L. Δ 62° 42' 52" T 69.83 L 125.43 P.C. 44+90.82 P.T. 46+16.25	⑨ N. 64° 55' 38" W. 60° C.R. Δ 69° 39' 38" T 66.44 L 116.10 P.C. 44+76.56 P.T. 47+92.66	⑩ N. 08° 25' 50" E. 40° C.R. Δ 73° 21' 28" T 106.69 L 183.39 P.C. 52+37.80 P.T. 54+21.18	⑪ S. 45° 12' 22" E. 60° C.P. Δ 126° 21' 48" T 188.89 L 210.61 P.C. 56+91.72 P.T. 59+02.33
⑫ N. 63° 01' 50" E. 40° C.L. Δ 65° 45' 48" T 92.60 L 164.41 P.C. 60+13.99 P.T. 61+78.41	⑬ S. 75° 13' 29" E. 20° C.R. Δ 31° 44' 41" T 81.46 L 158.72 P.C. 66+69.40 P.T. 68+28.12	⑭ N. 85° 26' 01" E. 10° C.L. Δ 17° 20' 30" T 87.38 L 173.42 P.C. 69+53.47 P.T. 71+26.89	⑮ S. 65° 44' 35" E. to ⑯ 20° C.R. Δ 30° 49' 24" T 78.97 L 154.12 P.C. 72+40.38 P.T. 73+94.50	⑰ S. 67° 35' 38" E. to ⑱ N. 89° 13' 49" W. and. 10° C.L. Δ 21° 38' 11" T 109.49 L 216.36 P.C. 11+36.36 P.T. 13+52.72

3896

Dec 1, 1978