

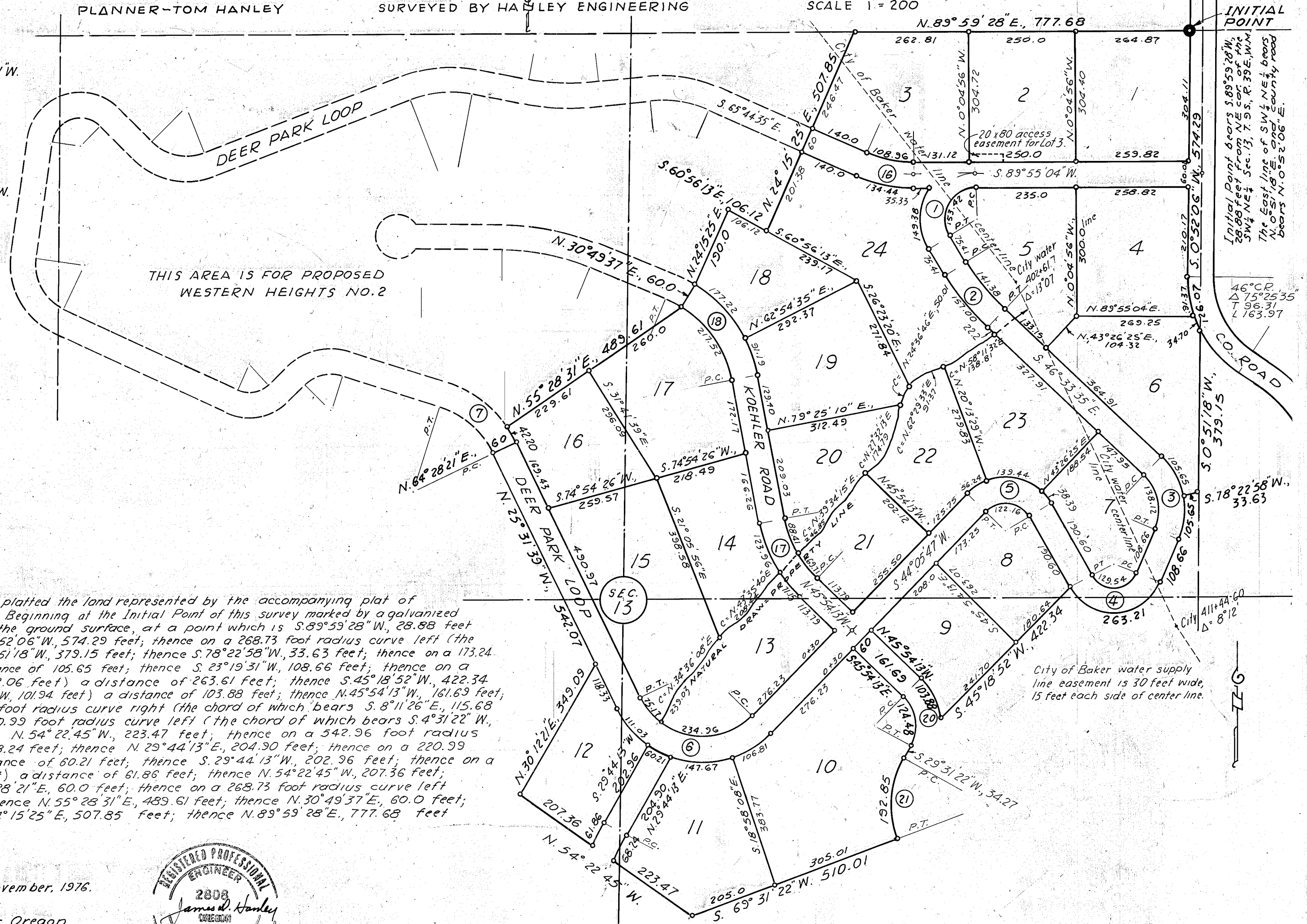
WESTERN HEIGHTS NO. 1

PLANNER-TOM HANLEY

SURVEYED BY HANLEY ENGINEERING

SCALE 1"=200'

ROAD CENTERLINE CURVE AND TANGENT DATA		
① S. 31° 38' 27" E.	② S. 46° 33' 35" E.	③ S. 23° 19' 31" W.
56° C.L. Δ 121° 33' 31" T 182.91 L 217.07 PC 5+24.32 PT 7+41.39	10° C.L. Δ 14° 55' 08" T 75.02 L 149.19 PC 8+16.80 PT 9+65.99	40° C.P. Δ 69° 53' 06" T 100.08 L 174.71 PC 14+64.05 PT 16+38.76
④ N. 29° 01' 56" W.	⑤ S. 44° 05' 47" W.	⑥ N. 25° 31' 39" W.
65° C.R. Δ 127° 38' 33" T 179.31 L 196.37 PC 17+47.42 PT 19+43.79	60° C.L. Δ 106° 52' 17" T 128.75 L 178.12 PC 21+34.39 PT 23+2.51	30° C.P. Δ 110° 22' 34" T 274.67 L 367.92 PC 30+29.99 PT 33+97.91
⑦ 24° C.L. Δ 46° 20' 45" T 102.19 L 193.11 PC 40+58.31 PT 42+51.42	⑩ 20° C.R. Δ 35° 19' 25" T 91.21 L 176.61 PC 1+43.79 PT 3+20.40	⑬ 20° C.L. Δ 57° 00' 48" T 155.59 L 285.07 PC 6+58.83 PT 9+43.90
⑭ 20° C.L. Δ 75° 25' 35" T 96.31 L 163.97 PC 1+91.69 PT 3+55.66	⑮ 20° C.L. Δ 50° 00' 00" T 89.06 L 166.67 PC 3+89.93 PT 5+56.60	⑯ 20° C.L. Δ 24° 20' 21" T 61.78 L 121.70 PC 77+74.74 PT 78+96.44



ENGINEER'S STATEMENT

I, James D. Hanley, being first duly sworn, say that I have correctly surveyed and platted the land represented by the accompanying plat of WESTERN HEIGHTS No. 1, the exterior boundaries of which are described as follows: Beginning at the Initial Point of this survey marked by a galvanized iron pipe, two inches in diameter, thirty-six inches long, and set six inches below the ground surface, at a point which is S. 89° 59' 28" W., 28.88 feet from the Northeast corner of the SW 1/4 NE 1/4 of Sec. 13, T. 9 S., R. 39 E., W. 1/2; thence S. 0° 52' 06" W., 574.29 feet; thence on a 268.73 foot radius curve left (the long chord of which bears S. 12° 34' 23" E., 124.91 feet) a distance of 126.07 feet; thence S. 0° 51' 18" W., 379.15 feet; thence S. 78° 22' 58" W., 33.63 feet; thence on a 173.24 foot radius curve right (the long chord of which bears S. 5° 51' 15" W., 104.01 feet) a distance of 105.65 feet; thence S. 23° 19' 31" W., 108.66 feet; thence on a 118.15 foot radius curve right (the long chord of which bears S. 87° 08' 48" W., 212.06 feet) a distance of 263.61 feet; thence S. 45° 18' 52" W., 422.34 feet; thence on a 154.56 foot radius curve left (the chord of which bears N. 26° 38' 26" W., 101.94 feet) a distance of 103.88 feet; thence N. 45° 54' 13" W., 161.69 feet; thence S. 44° 05' 47" W., 60.0 feet; thence S. 45° 54' 13" E., 161.69 feet; thence on a 34.56 foot radius curve right (the chord of which bears S. 8° 11' 26" E., 115.68 feet) a distance of 124.48 feet; thence S. 29° 31' 22" W., 34.27 feet; thence on a 220.99 foot radius curve left (the chord of which bears S. 4° 31' 22" W., 186.79 feet) a distance of 192.85 feet; thence S. 69° 31' 22" W., 510.01 feet; thence N. 54° 22' 45" W., 223.47 feet; thence on a 542.96 foot radius curve right (the chord of which bears N. 26° 08' 12" E., 68.19 feet) a distance of 68.24 feet; thence N. 29° 44' 13" E., 204.30 feet; thence on a 220.99 foot radius curve right (the chord of which bears N. 62° 07' 12" W., 60.03 feet) a distance of 60.21 feet; thence S. 29° 44' 13" W., 202.96 feet; thence on a 602.96 foot radius curve left (the chord of which bears S. 26° 48' 05" W., 61.83 feet) a distance of 61.88 feet; thence N. 54° 22' 45" W., 207.36 feet; thence N. 30° 12' 21" E., 349.09 feet; thence N. 25° 31' 39" W., 542.07 feet; thence N. 64° 28' 21" E., 60.0 feet; thence on a 268.73 foot radius curve left (the chord of which bears N. 30° 01' 53" W., 42.16 feet) a distance of 42.20 feet; thence N. 55° 28' 31" E., 489.61 feet; thence N. 30° 49' 37" E., 60.0 feet; thence N. 24° 15' 25" E., 130.0 feet; thence S. 60° 56' 13" E., 106.12 feet; thence N. 24° 15' 25" E., 507.85 feet; thence N. 89° 59' 28" E., 777.68 feet to the point of beginning.



Subscribed and sworn before me this 17th day of November, 1976.

James D. Hanley, Notary Public for Oregon.
My commission expires August 11, 1977.



KNOW ALL MEN BY THESE PRESENTS: That Warnock Ranches, Inc., an Oregon corporation, the owner and claimant of the tract herein described, does hereby declare and acknowledge through its secretary that the accompanying annexed map is the authorized plat of WESTERN HEIGHTS No. 1 subdivision.

Dan Warnock, Jr.
Secretary-treasurer, Warnock Ranches, Inc.

STATE OF OREGON } SS
COUNTY OF BAKER }
BE IT REMEMBERED, that on November 22, 1976, before me did personally appear the within named Dan Warnock, Jr. and acknowledged to me that he executed the same freely and voluntarily.

Carlyle D. Steeb
Notary Public for Oregon
My commission expires November 21, 1980

I, James Voelz, County Surveyor for Union County, Oregon certify that I have examined the plat of Western Heights No. 1 subdivision and that it complies with the statutes of this state and is therefore approved.

November 18, 1976

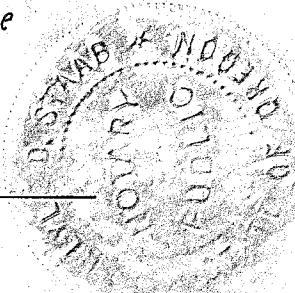
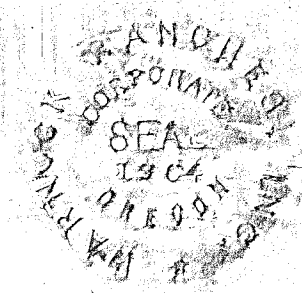
James W. Voelz

All taxes and assessments are paid to Dec. 1, 1976.

Ralph L. McGray
County Assessor Nov. 30, 1976.

We, the undersigned officers in and for Baker County, Oregon do hereby approve the plat of WESTERN HEIGHTS No. 1.

Wm. W. Quigley
Nov. 22, 1976 Planning Director
Arnold R. Fuller
Nov. 30, 1976 County Judge
Franklin Smith
Nov. 30, 1976 County Commissioner
George V. Nicolascu
Nov. 30, 1976 County Commissioner



Dec. 8, 1976

Antia C. Johnson