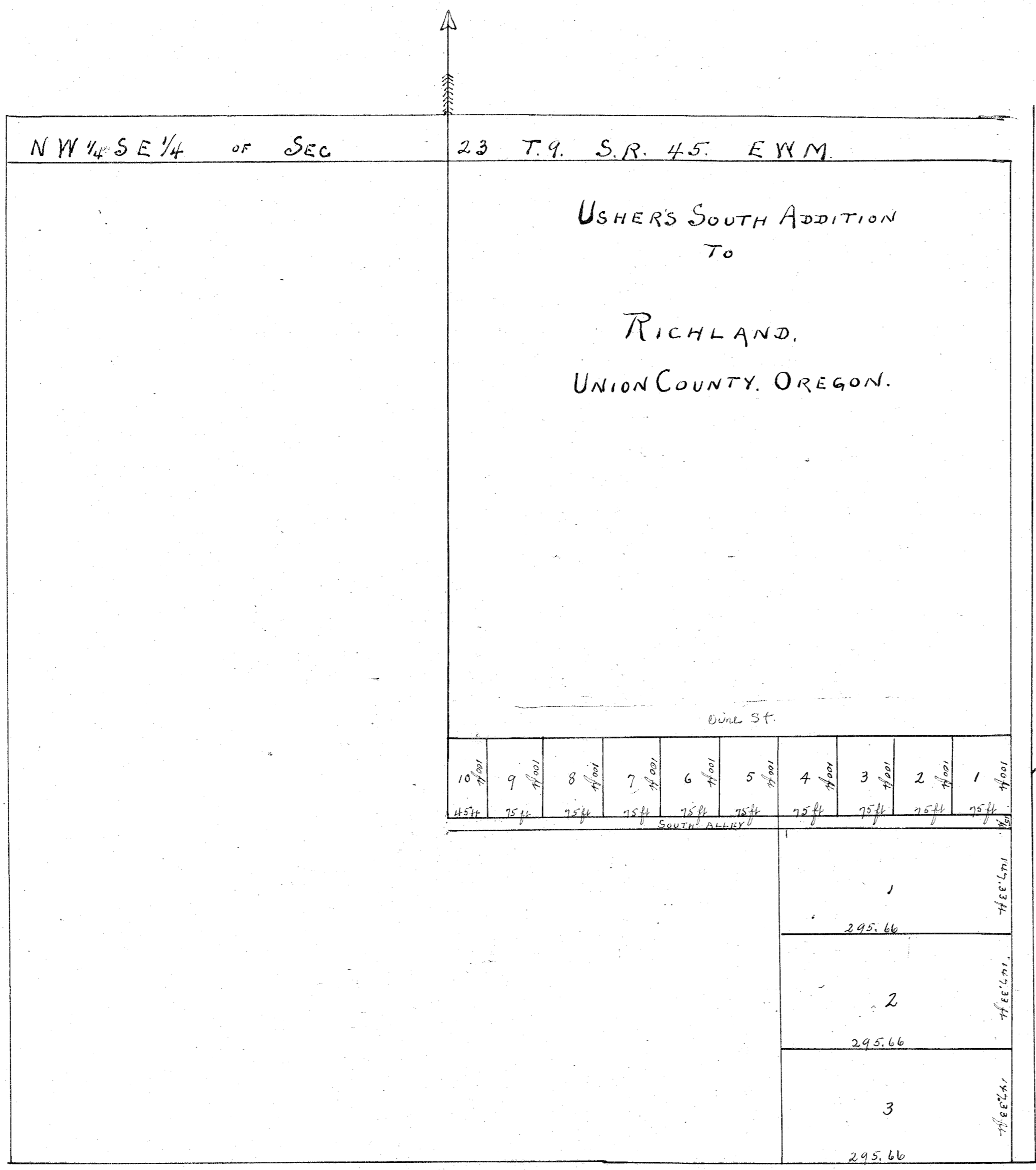


See Deed Record 57 Page 228.



USHERS SOUTH ADDITION TO RICHLAND

Beginning at a point 774 ft south and 30 ft west of the north east corner of the northwest 1/4 of the southeast 1/4 of Section 23 T.9. S.R. 45 E.W.M. Union County, State of Oregon. Hence West 720 ft
 " South 115 ft to the south side of an alley 15 ft wide.
 " East 424.34 ft
 " South 441.99 ft
 " East 295.66 ft
 " North 556.99 ft to the place of beginning.

Blocks 1-2-3 are 147.33 ft north and South by 295.66 East & West Lots 1-2-3.
 4-5-6-7-8-9 are 75 ft facing on Vine Street by 100 ft deep. Lot No 10 is 45 ft facing on Vine Street by 100 ft. Surveyed July 19th 1900 H. B. Blackster Surveyor.