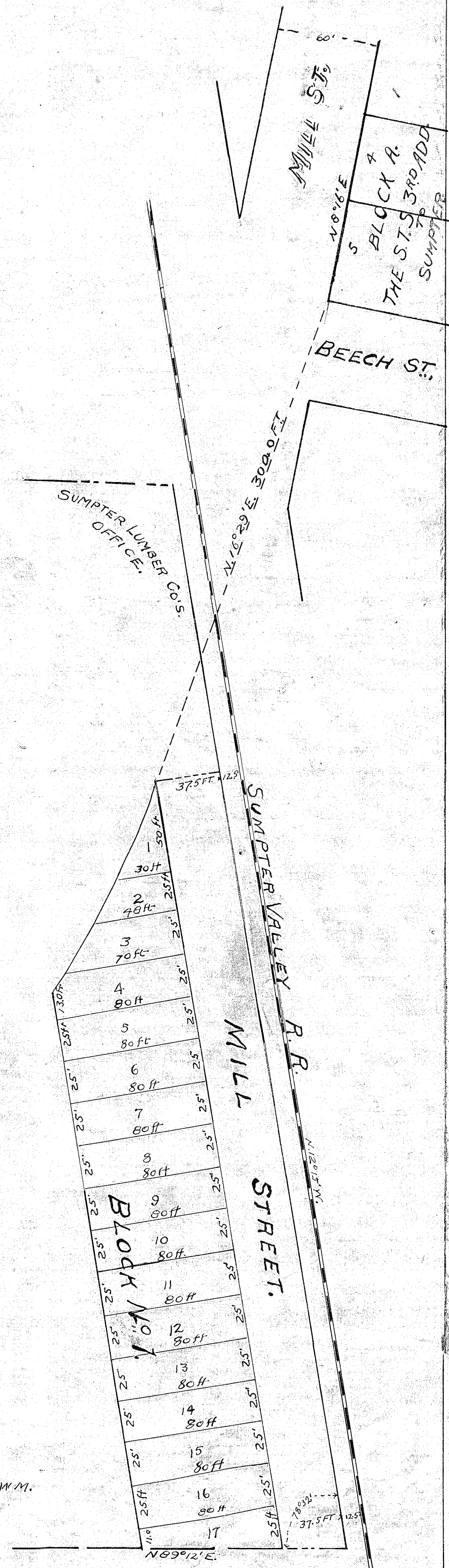


MAP OF  
TACOMA ADDITION  
TO THE CITY OF  
SUMPTER OREGON.

SURVEYED, OCTOBER 1903.

BY PHILBRICK & FENNER.

SCALE 50 FT = 1 INCH.



THIS PLAT IS LOCATED IN THE N<sub>1</sub>/<sub>2</sub> OF SW<sub>4</sub> OF NE<sub>1</sub>/<sub>4</sub> OF SEC. 32. T. 9 S. R. 37 E. W. M.