

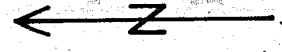
DEED 75 44 038

MAP Of Major Partition

In Portions of Sections 25 & 26, T8S, R38E,
WM

Owner-Partitioner
Robert K. Street
Box 365
Baker, Oregon 97814

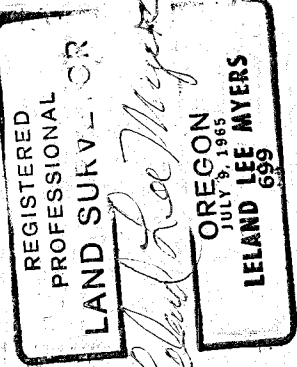
Surveyed
July 28, 1975
Scale 1" = 200'



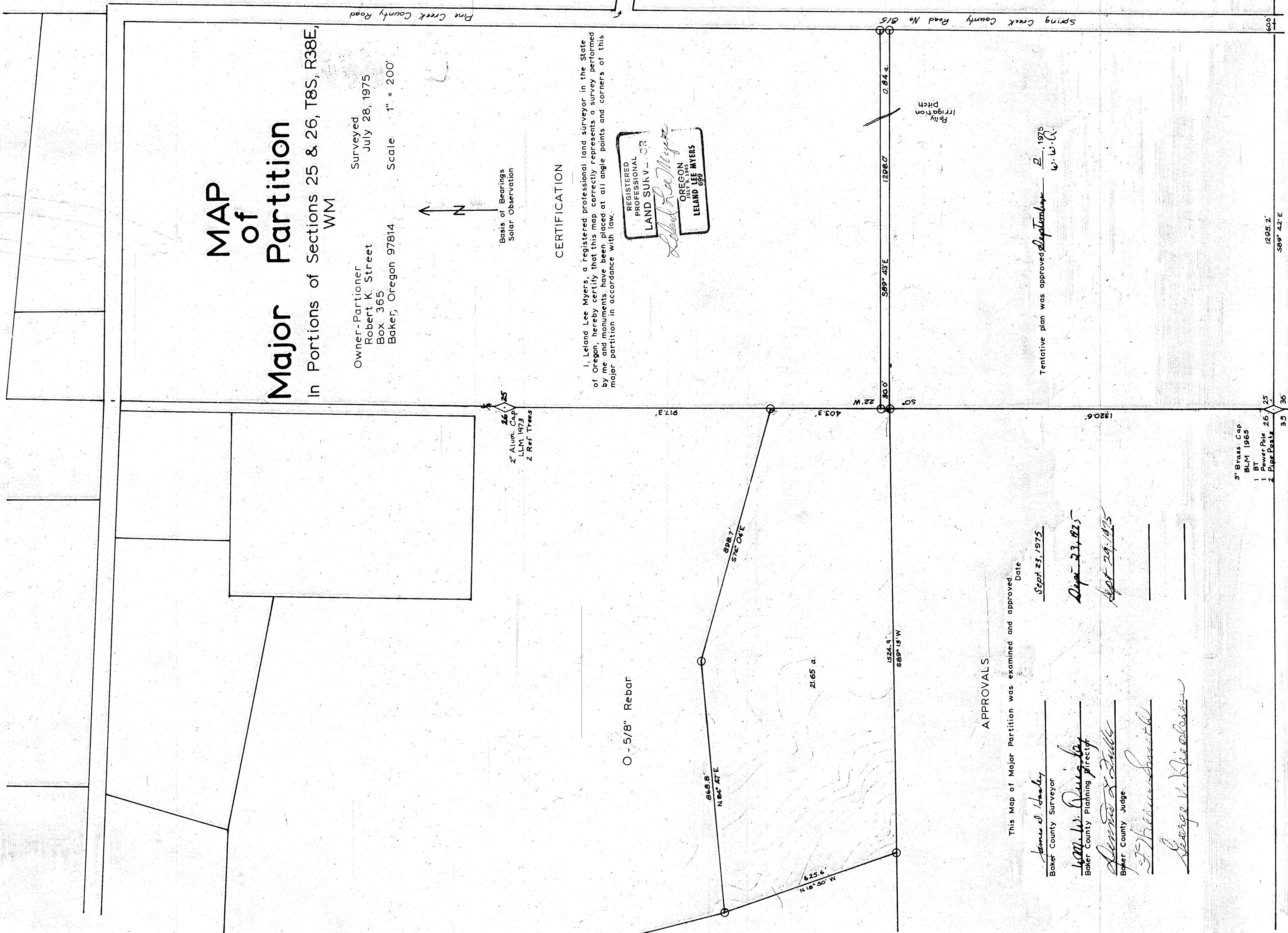
Basis of Bearings
Solar Observation

CERTIFICATION

I, Leland Lee Myers, a registered professional land surveyor in the State of Oregon, hereby certify that this map correctly represents a survey performed by me and monuments have been placed at all angle points and corners of this major partition in accordance with law.



O - 5/8" Rebar



APPROVALS

This Map of Major Partition was examined and approved Date

<u>James D. Stanley</u> Baker County Surveyor	<u>Sept. 23, 1975</u> Date
<u>Wm. W. Dunnington</u> Baker County Planning Director	<u>Sept. 23, 1975</u> Date
<u>Alvin E. Fuller</u> Baker County Judge	<u>Sept. 29, 1975</u> Date
<u>F. Williams Smith</u>	_____
<u>George V. Dickerson</u>	_____

Tentative plan was approved September 2, 1975
W. W. R.

3" Brass Cap
BLM 1965
1 BT
2 Pipe Posts

35 36

1295.2
569° 42' E

6065 Oct 27, 1975